

DISC MOWER PARTS

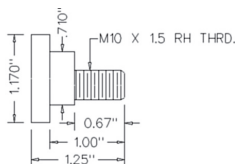
DISC MOWER BLADE BOLTS & NUTS



A-527745K Bolt Kit, Disc Mower Blade
Use w/ 527747BH, 527747NI, 527746BH & 527746NI Blades
Bush Hog DM70, DM80, DM90 ALL Used w/ Blades 527746BH, DM180, DM190, DM5406, DM5407, DM5408, DM5409, 47BH, 48BH & 49BH
Case-IH (3204, 3205, 3206 ALL Used w/ Blades ZA113385A1 & ZA113384A1), 3309 Used w/ Blades ZA113385A1 & ZA113384A1
Hesston (1004, 1005, 1006, 1007, 1008 ALL SN 1010846->)
New Idea (5209, 5212 ALL SN 16013->), 5312, (5406, 5407, 5408, 5409, 5410 ALL SN 1007482-> ALL Used w/ Blades 527746NI, 47NI, 48NI & 49NI)

A-527733K Bolt Kit, Disc Mower Blade
Consists of 527733 Nut & 526905 Nut (Used w/ 526215 & 526216 Disc Mower Blades)
Bush Hog DM18, DM19, DM7, DM8, DM9

A-06568555K Bolt Kit, Disc Mower Blade
Fahr SEVERAL



A-90081160K Bolt Kit, Disc Mower Blade
Consists of Bolt & Nut
Fahr SM2.17, SM2.21, SM2.24, SM3.24, SM3.28
Gehl
Vicon CM167, CM216 Series 14031, CM217, CM240, CM247, CM165 Series 14020-14023-14034

A-BK018 Bolt Kit, Disc Mower
Consists Of (6) Bolts & (6) Nuts
Fella
Gehl (140, 160, 2310, 2330, 2350 ALL Used w/ Blades 604658, 604659, 612634 & 612635)
Vicon

A-124508K Bolt Kit, Disc Mower Blade
Used w/ 121248 Blade Holder
Fella KM166A, KM191, KM192A

A-F426053KZ Bolt Kit, Fella Disc Mower-M12 nut
Consists Of 477263 Bolt & 477274 Nut
Fella SM215, SM216, SM165, SM206, SM210, SM240, SM270, SM300, SM320, SM400, SM410, FKM180, FKM2, FKM2H

A-478415K Bolt Kit, Disc Mower Blade
Consists Of Bolt & Nut
Fella SEVERAL

A-BK002 Bolt Kit, Disc Mower
Kit Contains: (5) 87053834 Nuts & (5) 86543211 Bolts.
Ford / New Holland 615 SN 642535>, 616 SN 640855>, 617 SN 637900>

A-766728K Bolt Kit, Disc Mower Blade
Ford / New Holland 442, 452, 462

A-VLH1706 Bolt Kit, Disc Mower Blade
Consists Of (6) Bolts & (6) Nuts
Ford / New Holland (408, 411, 412, 415 ALL w/o Lifters On Discs / Used w/ Blades 853819 & 853820), (442, 452, 462, 463, 465 ALL Used w/ Blades 784220 & 784221)

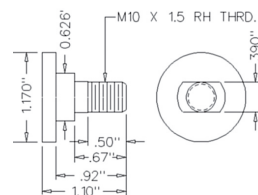
Gehl (1162, 1165 ALL Used w/ Blades 113268 & 113269), (162, 2340 ALL Used w/ Blades 126744, 125446 & 125447), 2345 Used w/ Blades 113268 & 113269, 2360 Used w/ Blades 126744, 125446 & 125447, 2365 Used w/ Blades 113268 & 113269)

Kuhn (FC250, FC300, FC350, GMD400 ALL Used w/ Blades 55903210 & 55903310), GMD44HD Used w/ Blades 56451200 & 56451300, GMD500 Used w/ Blades 55903210 & 55903310, GMD55HD Used w/ Blades 56451200 & 56451300, GMD600 Used w/ Blades 55903210 & 55903310, GMD66HD Used w/ Blades 56451200 & 56451300, GMD700 Used w/ Blades 55903210 & 55903310, GMD77HD Used w/ Blades 56451200 & 56451300)

A-86515925K Bolt Kit, Disc Mower
Consists of 86515925 bolt & 86515265 nut (used w/ 9847683 & 9847684 blades).

Ford / New Holland (1411, 1431, 615, 616, 617 ALL Discs w/o Lifters))

A-56210100K Bolt Kit, Disc Mower Blade
Ford / New Holland (442, 452, 462 ALL Used w/ Blades 766726 & 766727)
Gehl 162 Used w/ Blades 613727 & 613728
Kuhn (GMD44, GMD55, GMD66 ALL Used w/ Blades 56151210 & 56151310)



A-76N928 Bolt Kit, Disc Mower Blade
Sold in Multiples of 6
Ford / New Holland
Gehl

A-CC19334K Bolt Kit, Disc Mower Blade
John Deere 1320, 1326, 1327, 240, 260

A-CC19994 Bolt Kit, Disc Mower Blade
John Deere 1320, 1326, 1327, 1350, 1360, 1460, 1470, 270

A-CC19334 Bolt Kit, Disc Mower Blade
John Deere 1320, 1326, 1327, 240, 260

A-CC19929 Bolt Kit, Disc Mower Blade
John Deere

A-BK004 Bolt Kit, Disc Mower
Consists Of (6) Bolts & (6) Nuts
Krone (240, 241, 281, AM167, AM202, AM242, AM282 ALL Used w/ Blades 1448251 & 261, 1466901 & 911, 1473025, 1474195)

A-1377266K Bolt Kit, Disc Mower Blade
Consists Of Bolt & Nut
Krone SEVERAL

A-56150100K Bolt Kit, Disc Mower Blade
Kuhn GMD44, GMD55, GMD66, GMD77

A-56210100 Bolt Kit, Disc Mower Blade
Shoulder Dia, 0.620" Shoulder Height, 0.391"
Kuhn (GMD44, GMD55, GMD66 ALL Used w/ Blades 56151210 & 56151310)

A-56150100 Bolt Kit, Disc Mower Blade
Shoulder Dia, 0.620" Shoulder Height, 0.3795"
Kuhn GMD44, GMD55, GMD66, GMD77

A-80201252 Nut, Disc Mower Bolt (12mm)
Kuhn FC200, FC250, FC300, FC350, GMD400, GMD500, GMD600, GMD700

Parts are not original equipment parts and are not sponsored, affiliated, or otherwise connected with any major brand.

DISC MOWER PARTS

A-56115800 Bolt Kit, Disc Mower Blade
Kuhn FC200, FC250, FC300, FC350, GMD400, GMD500, GMD600, GMD700

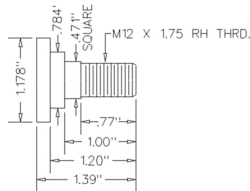
A-80201062 Nut, 10mm
Kuhn GMD44, GMD55, GMD66, GMD77

A-904-606 Bolt, Disc Mower
Replaces: 527733
New Idea 5209, 5212, 5312, 5406, 5409

A-904-610 Nut, Disc Mower
Replaces: 526905
New Idea 5209, 5212

A-700127073 Nut, Knife
Replaces: 526905
Hesston 1320, 1340, 1360, 1365, 8070, 8500

A-99307816 Lock Nut
Taarup (ALL MODELS)

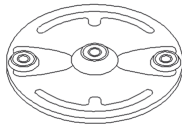


A-56294000 Bolt Kit, Disc Mower Blade
Taarup SEVERAL

A-B1374593K Bolt Kit, Disc Mower Blade
 Consists of B1374593 bolt & 30577200 nut.
Vicon

DISC

A-87723 Disc
Bush Hog SEVERAL

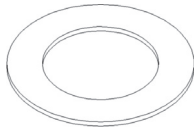


A-274117 Disc
Ford / New Holland 442, 452, 462

A-DC19535 Disc
John Deere 240

A-56200700 Disc
Kuhn GMD55, GMD66, GMD77, GMD44

A-56452100 Heavy Duty Disc
Kuhn GMD55HD, GMD66HD, GMD77HD



A-700712569 Disc, Friction
Hesston 1320, 1340, 1360, 1365

A-K56450210SZ Disc, Heavy Duty Cone
Kuhn GMD55HD, GMD66HD, GMD77HD

A-56450110 Disc, Heavy Duty
Kuhn SEVERAL

A-56200800 Cone Disc, Standard
Kuhn SEVERAL

A-56450210 Cone Disc, Heavy Duty
Kuhn SEVERAL

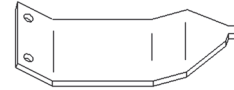
A-4120114690 Disc
Lely OPTIMO 165, OPTIMO 205, OPTIMO 240, OPTIMO 280, OPTIMO 320

A-527914 Disc
New Idea (5209, 5212 ALL SN 16013>), 5312, (5406, 5407, 5408, 5409, 5410 ALL SN 1007482>)

A-1019894 Disc
Vicon CM165 Series 14034 & 14037, CM240 Series 14039, CM247

SKID

A-87724 Skid
Bush Hog



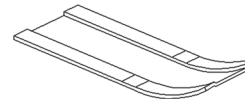
A-ZA526875 Skid Plate
Case-IH 3309

A-ZA526438 Skid Plate
Case-IH 3204, 3205, 3206

A-86110 Skid Plate
Bush Hog DM7, DM8, DM9

A-526875 Disc Mower Skid Plate
Hesston 1004, 1005, 1006, 1007, 1008

A-56801700 Skid Pad
 Used w/ 56801420 Stone Guard
Kuhn GMD500, (GMD600, GMD700 ALL SN 940001>)

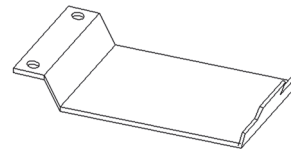


A-56330200 Skid Plate Weld on Pad
Kuhn GMD55, GMD55HD, GMD66, GMD66HD, GMD77, GMD77HD

A-4120120050 Skid, Wide Stone Guard
Lely OPTIMO 165, OPTIMO 205, OPTIMO 240, OPTIMO 280, OPTIMO 320

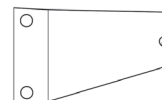


A-526438 Disc Mower Skid Plate
New Idea (526, 527, 528 ALL <-1989)



A-90062054 Tall Skid Plate
Vicon CM165 Series 14023, CM240 Series 14024

A-90066591 Short Skid Plate
Vicon CM165 Series 14034 & 14037, CM205 Series 14028, CM240 Series 14039



A-PZ116 Holder, Blade
Zweegee CM165 (H), CM166, CM170

Parts are not original equipment parts and are not sponsored, affiliated, or otherwise connected with any major brand.

DISC MOWER PARTS

BLADE HOLDER

A-PZ086 Holder, Double Blade

Zweegee CM215

A-DZ0777 Holder, Blade

Zweegee FALAZET 230, FALAZET 275, FALAZET 320

A-9210651 Holder, Blade

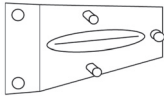
Claas WM20, WM24, WM26, WM31F

A-9474271 Holder, Blade

Claas CORTO 290F, WM165, WM185

A-9484591 Holder, Blade

Claas CORTO 165, CORTO 185, CORTO 210, CORTO 300, WM210



A-1101701055000 Plate, Blade

Dixie SEVERAL



A-PZ0250 Holder, Blade

Fahr KM3.19S

Zweegee CM185H, CM186, CM187, CM189, CM190, CM265, CM270A

A-06563514 Holder, Blade

Fahr KM20, KM22, KM24, KM25

A-06580109 Holder, Blade

Fahr KM20, KM22, KM24, KM25

A-EU056 Holder, Disc Mower Blade

Fahr KM3.23S, KM3.23STC

Zweegee CM230

A-PZ0243 Holder, Blade

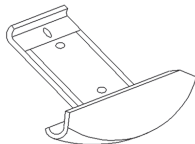
Fahr KM3.21FS, KM3.21S

Zweegee CM210, CM211, CM212, CM220

A-121248 Holder, Blade

Fella KM166A, KM191, KM192A

SHOE GUARD



A-781810 Inner Shoe Guard

Ford / New Holland 442, 452, 462, 463, 465

A-56205800 Inner Shoe Guard

John Deere 240

Kuhn GMD44, GMD55 SN 780101>, GMD55HD, GMD66, GMD66HD, GMD77, GMD77HD

A-56205802 Inner Shoe Guard

Kuhn (44, 55, 66 ALL w/o adjustable bolt)

A-781810NH Inner Shoe Guard

w/Adjusting Bolts

Replaces: 274153

Ford / New Holland 442, 462, 463

STONE GUARD

Ford / New Holland 442, 452, 462, 463, 465

A-781809 Stone Guard

For All Discs Except First Inner End Disc

Ford / New Holland 442, 452, 462, 463, 465

A-56190600 Stone Guard

John Deere

Kuhn GMD44, GMD55 SN 780101->, GMD66, GMD66HD, GMD77HD

A-56801420 Stone Guard

6 Reqd. for GMD600 & 7 Reqd. for GMD700

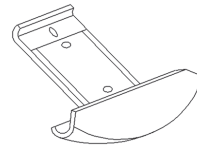
Kuhn (GMD600, GMD700 ALL SN 940001-960530)

A-781809NH Stone Guard

w/Adjusting Bolts

Replaces: 274106

Ford / New Holland 442, 462, 463



A-56190500 Stone Guard

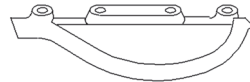
Kuhn

A-EF105319M Blade, Flail Mower

Mott (74, 88 ALL Course Cut)

A-EF293 Blade, Flail Mower

Mott (108, 124, 48, 60, 92 ALL Fine Cut)



A-90015853 Center Stone Guard

Vicon CM240 Series 14039 Except 1st & 2nd Outer Disc

A-90015923 End Stone Guard

Vicon CM165 Series 14034 & 14037 On All Knife Discs, CM205 Series 14028 On All Knife Discs, CM240 Series 14039 On 1st & 2nd Outer Knife Disc

A-186-13456 Stone Guard

Vicon (CM165, CM167, CM240, CM247 ALL new style), CM217

A-186-13457 Stone Guard

Vicon (CM216, CM217 ALL new style)

A-99460908 Guard, Vicon

Vicon CM SERIES

MISC

A-195BH Seal

Bush Hog (SEVERAL Using 114 Hub)

A-251388 Steel Grass Board

Ford / New Holland 501 SERIES, 502, 515 SERIES

A-920-156 Steel Grass Board

Ford / New Holland

A-604584 Spline Shaft

Replaces: 604607

Gehl 140, 160

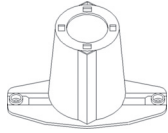
A-B2127786 Spline Shaft

Replaces: 604607

Vicon CM165 Series 14020-14023-14034, CM167, CM216 Series 14031, CM217, CM240 Series 14022-14035, CM247

Parts are not original equipment parts and are not sponsored, affiliated, or otherwise connected with any major brand.

DISC MOWER PARTS



A-56812700 Mower Disc

Not For GMD HD Series

Kuhn GMD600, GMD600 GII, GMD700, GMD700 GII, GMD800, GMD800 GII

A-EF102670 Clevis Pin

Mott (74, 88 ALL Course Cut)

A-EF100761 Clevis

Mott (74, 88 ALL Course Cut)

A-97871190 Dust Cap, Vicon

Vicon SEVERAL

A-ND8013 Lock Ring

Vicon

Parts are not original equipment parts and are not sponsored, affiliated, or otherwise connected with any major brand.