

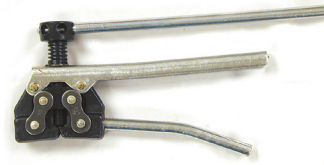
Chain Lube

Chain Lube



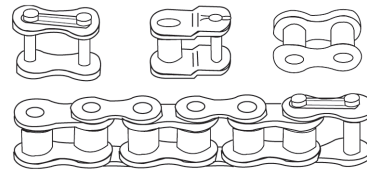
PART	DESCRIPTION	DIM A (1)
A-1T1475	Chain Lube	20 oz

Roller Chain Breaker Tools



PART	DESCRIPTION
A-5A1	Roller Chain Breaker <i>For use on chain 25 thru 60</i>
A-5A2	Roller Chain Breaker <i>For use on chain 60 thru 100</i>
A-5A2S	Screw w/ Tip

Roller Chains and Attachment Links



PART	DESCRIPTION	[pitch length]	[width]
A-RC25IMP	25 Roller Chain, 10ft (Import)		
A-CL25IMP	25 Conn. Link (Import)		
A-OL25IMP	25 Offset Link (Import)		
A-OL25	25 Offset Link (Drives USA)		
A-RC35	35 Roller Chain, 10ft (Drives USA)	3/8"	3/16"
A-CL35	35 Connector Link (Drives USA)		
A-OL35	35 Offset Link (Drives USA)		
A-RL35	35 Roller Link (Drives USA)		
A-RC35IMP	35 Roller Chain, 10ft (Import)		
A-RC35X50IMP	35 Roller Chain, 50ft (Import)		
A-CL35IMP	35 Connector Link (Import)		
A-OL35IMP	35 Offset Link (Import)		
A-RC40	40 Roller Chain, 10ft (Drives USA)	1/2"	5/16"
A-RC40X50	40 Roller Chain, 50ft (Drives USA)		
A-CL40	40 Connector Link (Drives USA)		
A-OL40	40 Offset Link (Drives USA)		
A-RL40	40 Roller Link (Drives USA)		
A-RC40IMP	40 Roller Chain, 10ft (Import)		
A-RC40X50IMP	40 Roller Chain, 50ft (Import)		
A-RC40X100IMP	40 Roller Chain, 100ft (Import)		
A-CL40IMP	40 Connector Link (Import)		
A-OL40IMP	40 Offset Link (Import)		

Parts are not Original Equipment parts and are not sponsored, affiliated or otherwise connected with any major brand.

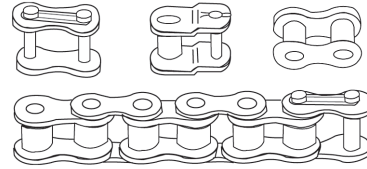
Roller Chains and Attachment Links

PART	DESCRIPTION	[pitch length]	[width]
A-CL40D	40 Double Connector Link (Drives USA)	1/2"	5/16"
A-OL40D	40 Double Offset Link (Drives USA)		
A-RC40DIMP	40 Double Roller Chain, 10ft (Import)		
A-CL40DIMP	40 Double Connector Link (Import)		
A-OL40DIMP	40 Double Offset Link (Import)		
A-RC41	41 Roller Chain, 10ft (Drives USA)	1/2"	1/4"
A-RC41X50	41 Roller Chain, 50ft (Drives USA)		
A-CL41	41 Connector Link (Drives USA)		
A-OL41	41 Offset Link (Drives USA)		
A-RL41	41 Roller Link (Drives USA)		
A-RC41IMP	41 Roller Chain, 10ft (Import)		
A-RC41X50IMP	41 Roller Chain, 50ft (Import)		
A-CL41IMP	41 Connecting Link (Import)		
A-OL41IMP	41 Offset Link (Import)		
A-RC50	50 Roller Chain, 10ft (Drives USA)	5/8"	3/8"
A-RC50X50	50 Roller Chain, 50ft (Drives USA)		
A-CL50	50 Connector Link (Drives USA)		
A-OL50	50 Offset Link (Drives USA)		
A-RL50	50 Roller Link (Drives USA)		
A-RC50IMP	50 Roller Chain, 10ft (Import)		
A-RC50X50IMP	50 Roller Chain, 50ft (Import)		
A-CL50IMP	50 Conn. Link (Import)		
A-OL50IMP	50 Offset Link (Import)		
A-RC50HIMP	50 Heavy Roller Chain, 10ft (Import)	5/8"	3/8"
A-CL50HIMP	50 Heavy Conn. Link (Import)		
A-OL50HIMP	50 Heavy Offset Link (Import)		
A-RC50D	50 Double Roller Chain, 10ft (Drives USA)	5/8"	3/8"
A-RC50DX50	50 Roller Chain, 50ft (Drives USA)		
A-CL50D	50 Double Connector Link (Drives USA)		
A-OL50D	50 Double Offset Link (Drives USA)		
A-RC50DIMP	50 Double Roller Chain, 10ft (Import)		
A-CL50DIMP	50 Double Connector Link (Import)		
A-OL50DIMP	50 Double Offset Link (Import)		
A-RC60	60 Roller Chain, 10ft (Drives USA)	3/4"	1/2"
A-RC60X50	60 Roller Chain, 50ft (Drives USA)		
A-RC60X100	60 Roller Chain, 100ft (Drives USA)		
A-CL60	60 Connector Link (Drives USA)		
A-CL60SS	60 Stainless Steel Conn. Link (Drives USA)		
A-OL60	60 Offset Link (Drives USA)		
A-RL60	60 Roller Link (Drives USA)		
A-RC60IMP	60 Roller Chain, 10ft (Import)		
A-RC60X50IMP	60 Roller Chain, 50ft (Import)		
A-RC60X100IMP	60 Roller Chain, 100ft (Import)		
A-CL60IMP	60 Conn. Link (Import)		
A-OL60IMP	60 Offset Link (Import)		

Parts are not Original Equipment parts and are not sponsored, affiliated or otherwise connected with any major brand.

Roller Chains and Attachment Links

Roller Chains and Attachment Links



PART	DESCRIPTION	[pitch length]	[width]
A-RC60H	60 Heavy Roller Chain, 10ft (Drives USA)	3/4"	1/2"
A-RC60HX50	60 Heavy Roller Chain, 50ft (Drives USA)		
A-CL60H	60 Heavy Connector Link (Drives USA)		
A-OL60H	60 Heavy Offset Link (Drives USA)		
A-RL60H	60 Heavy Roller Link (Drives USA)		
A-RC60HIMP	60 Heavy Roller Chain, 10ft (Import)		
A-RC60HX50IMP	60 Heavy Roller Chain, 50ft (Import)		
A-CL60HIMP	60 Heavy Conn. Link (Import)		
A-OL60HIMP	60 Heavy Offset Link (Import)		
A-RC60D	60 Double Roller Chain, 10ft (Drives USA)	3/4"	1/2"
A-CL60D	60 Double Connector Link (Drives USA)		
A-OL60D	60 Double Offset Link (Drives USA)		
A-RC60DIMP	60 Double Roller Chain, 10ft (Import)		
A-CL60DIMP	60 Double Connector Link (Import)		
A-OL60DIMP	60 Double Offset Link (Import)		
A-RC80	80 Roller Chain, 10ft (Drives USA)	1"	5/8"
A-RC80X50	80 Roller Chain, 50ft (Drives USA)		
A-CL80	80 Connector Link (Drives USA)		
A-OL80	80 Offset Link (Drives USA)		
A-RL80	80 Roller Link (Drives USA)		
A-RC80IMP	80 Roller Chain, 10ft (Import)		
A-RC80X50IMP	80 Roller Chain, 50ft (Import)		
A-CL80IMP	80 Conn. Link (Import)		
A-OL80IMP	80 Offset Link (Import)		
A-RC80H	80 Heavy Roller Chain, 10ft (Drives USA)	1"	5/8"
A-RC80HX50	80 Hvy Roller Chain, 50ft (Drives USA)		
A-CL80H	80 Hvy Connector Link (Drives USA)		
A-OL80H	80 Hvy Offset Link (Drives USA)		
A-RL80H	80 Hvy Roller Link (Drives USA)		
A-RC80HIMP	80 Hvy Roller Chain, 10ft (Import)		
A-CL80HIMP	80 Hvy Conn. Link (Import)		
A-OL80HIMP	80 Hvy Offset Link (Import)		
A-RC80D	80 Double Roller Chain, 10ft (Drives USA)	1"	5/8"
A-CL80D	80 Double Connector Link (Drives USA)		
A-OL80D	80 Double Offset Link (Drives USA)		
A-RC80DIMP	80 Double Roller Chain, 10ft (Import)		
A-CL80DIMP	80 Double Connector Link (Import)		
A-OL80DIMP	80 Double Offset Link (Import)		

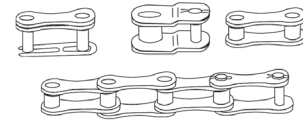
Parts are not Original Equipment parts and are not sponsored, affiliated or otherwise connected with any major brand.

Roller Chains and Attachment Links

Parts are not Original Equipment parts and are not sponsored, affiliated or otherwise connected with any major brand.

PART	DESCRIPTION	[pitch length]	[width]
A-RC100	100 Roller Chain, 10ft (Drives USA)	1-1/4"	3/4"
A-CL100	100 Connector Link (Drives USA)		
A-OL100	100 Offset Link (Drives USA)		
A-RL100	100 Roller Link (Drives USA)		
A-RC100IMP	100 Roller Chain, 10ft (Import)		
A-CL100IMP	100 Connector Link (Import)		
A-OL100IMP	100 Offset Link (Import)		
A-RC120	120 Roller Chain, 10ft (Drives USA)	1-1/2"	1"
A-CL120	120 Connector Link (Drives USA)		
A-OL120	120 Offset Link (Drives USA)		
A-OL120IMP	120 Offset Link (Import)		
A-RC160H	160 Roller Chain, 10ft (Drives USA)	2"	1 1/4"

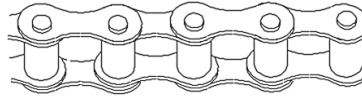
Roller Chains and Attachment Links



PART	DESCRIPTION	[pitch length]	[width]
A-RC2040	2040 Extended Pitch Roller Chain, 10ft (Drives USA)	1"	5/16"
A-RC2040X50	2040 Extended Pitch Roller Chain, 50ft (Drives USA)	1"	5/16"
A-CL2040	2040 Extended Pitch Connector Link (Drives USA)		
A-OL2040	2040 Extended Pitch Offset Link (Drives USA)		
A-RL2040	2040 Extended Pitch Roller Link (Drives USA)		
A-RC2040IMP	2040 Extended Pitch Roller Chain, 10ft (Import)	1"	5/16"
A-RC2040X50IMP	2040 Extended Pitch Roller Chain, 50ft (Import)	1"	5/16"
A-CL2040IMP	2040 Extended Pitch Conn. Link (Import)		
A-OL2040IMP	2040 Extended Pitch Offset Link (Import)		
A-RC2050	2050 Extended Pitch Roller Chain, 10ft (Drives USA)	1-1/4"	3/8"
A-RC2050X50	2050 Extended Pitch Roller Chain, 50ft (Drives USA)		
A-CL2050	2050 Extended Pitch Connector Link (Drives USA)		
A-OL2050	2050 Extended Pitch Offset Link (Drives USA)		
A-RL2050	2050 Extended Pitch Roller Link (Drives USA)		
A-RC2050IMP	2050 Extended Pitch Roller Chain, 10ft (Import)		
A-RC2050X50IMP	2050 Extended Pitch Roller Chain, 50ft (Import)		
A-RC2050X100IMP	2050 Extended Pitch Roller Chain (Import)		
A-CL2050IMP	2050 Extended Pitch Conn. Link (Import)		
A-OL2050IMP	2050 Extended Pitch Offset Link (Import)		
A-RC2060	2060 Extended Pitch Roller Chain, 10ft(Drives USA)	1-1/2"	1/2"
A-CL2060	2060 Extended Pitch Connector Link (Drives USA)		
A-OL2060	2060 Extended Pitch Offset Link (Drives USA)		
A-RL2060	2060 Extended Pitch Roller Link (Drives USA)		
A-RC2060IMP	2060 Extended Pitch Roller Chain, 10ft (Import)		
A-RC2060X50IMP	2060 Extended Pitch Roller Chain, 50ft (Import)		
A-CL2060IMP	2060 Extended Pitch Conn. Link (Import)		
A-OL2060IMP	2060 Extended Pitch Offset Link (Import)		

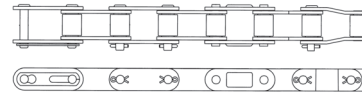
Roller Chains and Attachment Links

Roller Chains and Attachment Links



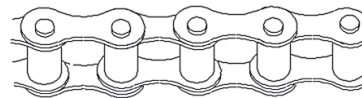
PART	DESCRIPTION	PITCH	WIDTH
A-A550	A550 Roller Chain, 10 ft	1.670"	.797"
A-A550C	A550-C Connector Link		
A-A550R	A550-R Roller Link		
A-A550O	A550-O Offset Link		
A-A620C	A620-C Connector Link	1.654"	.987"
A-A620O	A620-O Offset Link		

Conveyor Series Chain and Attachment Links



PART	DESCRIPTION	PITCH	WIDTH
A-CA550	CA550 Conveyor Series Chain, 10 ft	1.630"	.797"
A-CA550C	CA550-C Connector Link		
A-CA550R	CA550-R Roller Link		
A-CA550O	CA550-O Offset Link		
A-CA555	CA555 Conveyor Series Chain, 10 ft	1.630"	.500"
A-CA555C	CA555-C Connector Link		
A-CA555R	CA555-R Roller Link		
A-CA555O	CA555-O Offset Link		
A-CA557	CA557 Conveyor Series Chain, 10 ft	1.630"	.797"
A-CA557C	CA557-C Connector Link		
A-CA557R	CA557-R Roller Link		
A-CA557O	CA557-O Offset Link		
A-CA620	CA620 Conveyor Series Chain, 10 ft	1.654"	.987"
A-CA620C	CA620-C Connector Link		
A-CA620R	CA620-R Roller Link		
A-CA620O	CA620-O Offset Link		

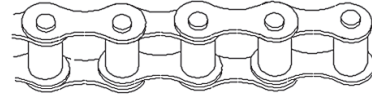
Metric Roller Chains and Attachment Links



PART	DESCRIPTION	LENGTH	PITCH	WIDTH	ROLLER O.D.
A-RC35M	Metric Roller Chain	16'	3/8" / 9.525 MM	7/32" / 5.72 MM	6.35 MM
A-CL35M	Metric Connecting Link w/ Spring Clip				
A-OL35M	Metric Offset Link w/ Cotter Pin				

Parts are not Original Equipment parts and are not sponsored, affiliated or otherwise connected with any major brand.

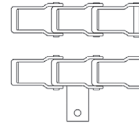
Metric Roller Chains and Attachment Links



Metric Roller Chains and Attachment Links

PART	DESCRIPTION	LENGTH	PITCH	WIDTH	ROLLER O.D.
A-RC38M	Metric Roller Chain	16'	1/2" / 12.7 MM	3/16" / 4.88 MM	7.75 MM
A-CL38M	Metric Connecting Link w/ Spring Clip				
A-OL38M	Metric Offset Link w/ Cotter Pin				
A-RC40M	Metric Roller Chain	16'	1/2" / 12.7 MM	5/16" / 7.75 MM	8.51 MM
A-CL40M	Metric Connecting Link w/ Spring Clip				
A-OL40M	Metric Offset Link w/ Cotter Pin				
A-RC50M	Metric Roller Chain	16'	5/8" / 15.875 MM	3/8" / 9.65 MM	10.16 MM
A-CL50M	Metric Connecting Link w/ Spring Clip				
A-OL50M	Metric Offset Link w/ Cotter Pin				
A-RC60M	Metric Roller Chain	16'	3/4" / 19.05 MM	7/16" / 11.68 MM	12.07 MM
A-CL60M	Metric Connecting Link w/ Spring Clip				
A-OL60M	Metric Offset Link w/ Cotter Pin				
A-RC80M	Metric Roller Chain	16'	1" / 25.4 MM	17.02 MM	15.88 MM
A-CL80M	Metric Connecting Link w/ Spring Clip				
A-OL80M	Metric Offset Link w/ Cotter Pin				
A-RC100M	Metric Roller Chain	16'	1 1/4" / 31.75 MM	3/4" / 19.56 MM	19.05 MM
A-CL100M	Metric Connecting Link w/ Spring Clip				
A-OL100M	Metric Offset Link w/ Cotter Pin				
A-RC120M	Metric Roller Chain	16'	1 1/2" / 38.1 MM	1" / 25.4 MM	25.4 MM
A-CL120M	Metric Connecting Link w/ Spring Clip				
A-OL120M	Metric Offset Link w/ Cotter Pin				

Pintle Chains



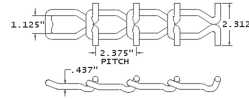
PART	DESCRIPTION
A-AL662	AL662 Pintle Chain, 10 ft
A-AL662CO	AL662-CO Connector Link
A-AL667H	AL667H Pintle Chain, 10 ft
A-AL667HCO	AL667H-CO Connector Link
A-AL667HASCO	AL667H-AS-CO Attaching Link
A-AL667X	AL667X Pintle Chain, 10 ft
A-AL667XCO	AL667X-CO Connector Link
A-AL667XASCO	AL667X-AS-CO Attaching Link

Parts are not Original Equipment parts and are not sponsored, affiliated or otherwise connected with any major brand.

CHAINS/SPROCKETS/PULLEYS/HUBS

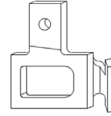
Steel Detachable Chains

T-Rod



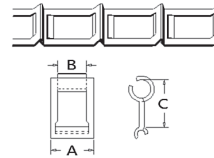
PART	DESCRIPTION
A-AL67R	67 T-Rod Chain, 1 Link

T-Bar Chain



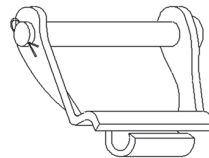
PART	DESCRIPTION	
A-AL67TASL	T-Bar Link	5/16" Rivet Hole
A-AL67TASR	T-Bar Link	5/16" Rivet Hole
A-AL67TA1R	T-Bar Link	3/8" Rivet Hole
A-AL67TA1L	T-Bar Link	3/8" Rivet Hole
A-AL67TA2L	T-Bar Link	7/16" Rivet Hole
A-AL67TA2R	T-Bar Link	7/16" Rivet Hole

Steel Detachable Chains



PART	DESCRIPTION	DIM A (1)	DIM B (2)	DIM C (3)
A-25	25 Steel Detachable Chain (10 ft)	45/64	27/64	29/32
A-32	32 Steel Detachable Chain (10 ft)	15/16	19/32	1-5/32
A-32W	32W Steel Detachable Chain (10 ft)	1-1/16	19/32	1-5/32
A-33	33 Steel Detachable Chain (10 ft)	1-1/16	11/16	1-13/32
A-42	42 Steel Detachable Chain (10 ft)	1-7/32	25/32	1-3/8
A-50H	50H Steel Detachable Chain (10 ft)	1-9/32	25/32	1-3/8
A-51	51 Steel Detachable Chain (10 ft)	1-3/32	45/64	1-5/32
A-52	52 Steel Detachable Chain (10 ft)	1-13/32	27/32	1-1/2
A-55	55 Steel Detachable Chain (10 ft)	1-9/32	51/64	1-5/8
A-62	62 Steel Detachable Chain (10 ft)	1-9/16	63/64	1-21/32
A-62A	62A Steel Detachable Chain (10 ft)	1-15/16	63/64	1-43/64
A-62H	62H Steel Detachable Chain (10 ft)	1-7/8	63/64	1-21/32
A-67H	67H Steel Detachable Chain (10 ft)	1-7/8	1-3/32	2-5/16
A-67XH	67XH Steel Detachable Chain (10 ft)	1-7/8	1-3/32	2-5/16
A-70	70 Steel Detachable Chain (10 ft)	1-15/16	1-3/32	2-1/64
A-7212A	71-1/2 Steel Detachable Chain (10 ft)	2	1-5/32	1-41/64

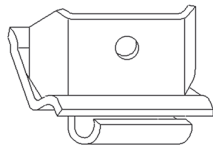
Steel Detachable Chains



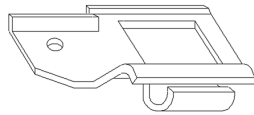
PART	DESCRIPTION
A-55CO	55CO Attachment Link
A-62CO	62CO Attachment Link

Parts are not Original Equipment parts and are not sponsored, affiliated or otherwise connected with any major brand.

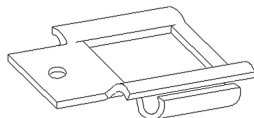
Parts are not Original Equipment parts and are not sponsored, affiliated or otherwise connected with any major brand.



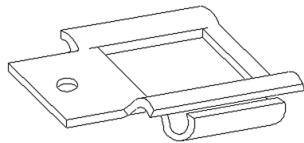
PART	DESCRIPTION
A-55C1	55C1 Attachment Link
A-62C1	62C1 Attachment Link



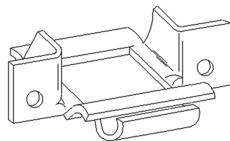
PART	DESCRIPTION
A-55A2L	55A2L Attachment Link
A-55A2R	55A2R Attachment Link



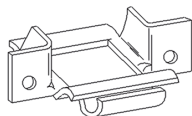
PART	DESCRIPTION
A-55A1L	55A1L Attachment Link
A-55A1R	55A1R Attachment Link



PART	DESCRIPTION
A-62A1L	62A1L Attachment Link
A-62A1R	62A1R Attachment Link

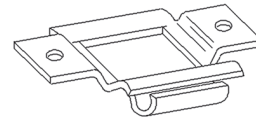


PART	DESCRIPTION
A-55SH	55SH Attachment Link

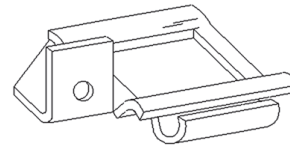


PART	DESCRIPTION
A-55SD	55SD Attachment Link
A-62SD	62SD Attachment Link

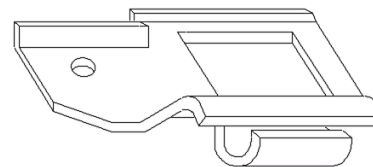
Steel Detachable Chains



PART	DESCRIPTION
A-55K1	55K1 Attachment Link



PART	DESCRIPTION
A-55G27L	55G27L Attachment Link
A-55G27R	55G27R Attachment Link
A-62G27L	62G27L Attachment Link
A-62G27R	62G27R Attachment Link



PART	DESCRIPTION
A-67HASL	67HASL Attachment Link
A-67HASR	67HASR Attachment Link
A-67XHASL	67XHASL Attachment Link
A-67XHASR	67XHASR Attachment Link

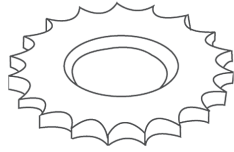
Link Chains



PART	DESCRIPTION
A-7B231	20 ft of 5/16" High Test Chain

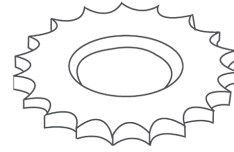
Sprockets

Sprockets



PART	DESC.	[I.D.]	[O.D.]	[teeth]	HUB REQUIRED
A-40V11	Sprocket	1 1/8"	2.004"	11	V
A-40V12	Sprocket	1 1/8"	2.166"	12	V
A-40V13	Sprocket	1 1/8"	2.329"	13	V
A-40V14	Sprocket	1 1/8"	2.491"	14	V
A-40V15	Sprocket	1 1/8"	2.653"	15	V
A-40W16	Sprocket	1 5/8"	2.814"	16	W
A-40W17	Sprocket	1 5/8"	2.975"	17	W
A-40W18	Sprocket	1 5/8"	3.136"	18	W
A-40W19	Sprocket	1 5/8"	3.297"	19	W
A-40X20	Sprocket	2"	3.457"	20	X
A-40X21	Sprocket	2"	3.618"	21	X
A-40X22	Sprocket	2"	3.778"	22	X
A-40X23	Sprocket	2"	3.938"	23	X
A-40X24	Sprocket	2"	4.098"	24	X
A-40X25	Sprocket	2"	4.258"	25	X
A-40X26	Sprocket	2"	4.418"	26	X
A-40X27	Sprocket	2"	4.578"	27	X
A-40X28	Sprocket	2"	4.738"	28	X
A-40X29	Sprocket	2"	4.898"	29	X
A-40X30	Sprocket	2"	5.057"	30	X
A-40X32	Sprocket	2"	5.377"	32	X
A-40X35	Sprocket	2"	5.856"	35	X
A-40X36	Sprocket	2"	6.015"	36	X
A-40X38	Sprocket	2"	6.334"	38	X
A-40X40	Sprocket	2"	6.653"	40	X
A-40X42	Sprocket	2"	6.972"	42	X
A-40X45	Sprocket	2"	7.451"	45	X
A-40X48	Sprocket	2"	7.927"	48	X
A-40X50	Sprocket	2"	8.25"	50	X
A-40X54	Sprocket	2"	8.885"	54	X
A-40X60	Sprocket	2"	9.841"	60	X
A-40X72	Sprocket	2"	11.752"	72	X
A-50V09	Sprocket	1 1/8"	2.092"	9	V
A-50V10	Sprocket	1 1/8"	2.299"	10	V
A-50V11	Sprocket	1 1/8"	2.504"	11	V

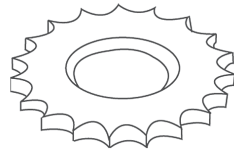
Sprockets



PART	DESC.	[I.D.]	[O.D.]	[teeth]	HUB REQUIRED
A-50W12	Sprocket	1 5/8"	2.708"	12	W
A-50W13	Sprocket	1 5/8"	2.911"	13	W
A-50W14	Sprocket	1 5/8"	3.114"	14	W
A-50W15	Sprocket	1 5/8"	3.316"	15	W
A-50W16	Sprocket	1 5/8"	3.517"	16	W
A-50X17	Sprocket	2"	3.719"	17	X
A-50X18	Sprocket	2"	3.919"	18	X
A-50X19	Sprocket	2"	4.121"	19	X
A-50X20	Sprocket	2"	4.321"	20	X
A-50X21	Sprocket	2"	4.521"	21	X
A-50X22	Sprocket	2"	4.722"	22	X
A-50X23	Sprocket	2"	4.922"	23	X
A-50X24	Sprocket	2"	5.123"	24	X
A-50X25	Sprocket	2"	5.323"	25	X
A-50X26	Sprocket	2"	5.523"	26	X
A-50X27	Sprocket	2"	5.723"	27	X
A-50X28	Sprocket	2"	5.922"	28	X
A-50X29	Sprocket	2"	6.122"	29	X
A-50X30	Sprocket	2"	6.321"	30	X
A-50X31	Sprocket	2"	6.521"	31	X
A-50X32	Sprocket	2"	6.721"	32	X
A-50X33	Sprocket	2"	6.92"	33	X
A-50X34	Sprocket	2"	7.12"	34	X
A-50X35	Sprocket	2"	7.319"	35	X
A-50X36	Sprocket	2"	7.519"	36	X
A-50X37	Sprocket	2"	7.718"	37	X
A-50X38	Sprocket	2"	7.918"	38	X
A-50X39	Sprocket	2"	8.117"	39	X
A-50X40	Sprocket	2"	8.316"	40	X
A-50X41	Sprocket	2"	8.715"	41	X
A-50X42	Sprocket	2"	8.715"	42	X
A-50X43	Sprocket	2"	8.914"	43	X
A-50X44	Sprocket	2"	9.114"	44	X
A-50X45	Sprocket	2"	9.313"	45	X
A-50X48	Sprocket	2"	9.911"	48	X
A-50X50	Sprocket	2"	10.309"	50	X
A-50X54	Sprocket	2"	11.106"	54	X
A-50X60	Sprocket	2"	12.306"	60	X

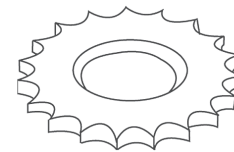
Parts are not Original Equipment parts and are not sponsored, affiliated or otherwise connected with any major brand.

Sprockets



Sprockets

PART	DESC.	[I.D.]	[O.D.]	[teeth]	HUB REQUIRED
A-60V09	Sprocket	1 1/8"	2.51"	9	V
A-60V10	Sprocket	1 1/8"	2.759"	10	V
A-60W11	Sprocket	1 5/8"	3.005"	11	W
A-60W12	Sprocket	1 5/8"	3.249"	12	W
A-60W13	Sprocket	1 5/8"	3.493"	13	W
A-60W14	Sprocket	1 5/8"	3.736"	14	W
A-60W16	Sprocket	1 5/8"	3.736"	16	W
A-60X15	Sprocket	2"	3.979"	15	X
A-60X16	Sprocket	2"	4.22"	16	X
A-60X17	Sprocket	2"	4.463"	17	X
A-60X18	Sprocket	2"	4.703"	18	X
A-60X19	Sprocket	2"	4.945"	19	X
A-60X20	Sprocket	2"	5.186"	20	X
A-60X21	Sprocket	2"	5.426"	21	X
A-60X22	Sprocket	2"	5.666"	22	X
A-60X23	Sprocket	2"	5.906"	23	X
A-60X24	Sprocket	2"	6.147"	24	X
A-60X25	Sprocket	2"	6.387"	25	X
A-60X26	Sprocket	2"	6.627"	26	X
A-60X27	Sprocket	2"	6.867"	27	X
A-60X28	Sprocket	2"	7.106"	28	X
A-60X29	Sprocket	2"	7.346"	29	X
A-60X30	Sprocket	2"	7.586"	30	X
A-60X31	Sprocket	2"	7.826"	31	X
A-60X32	Sprocket	2"	8.065"	32	X
A-60X33	Sprocket	2"	8.304"	33	X
A-60X34	Sprocket	2"	8.544"	34	X
A-60X35	Sprocket	2"	8.783"	35	X
A-60X36	Sprocket	2"	9.023"	36	X
A-60X38	Sprocket	2"	9.501"	38	X
A-60X39	Sprocket	2"	9.501"	39	X
A-60X40	Sprocket	2"	9.98"	40	X
A-60X42	Sprocket	2"	10.458"	42	X
A-60X45	Sprocket	2"	11.176"	45	X
A-60X48	Sprocket	2"	11.893"	48	X
A-60X50	Sprocket	2"	12.371"	50	X
A-60X54	Sprocket	2"	13.327"	54	X
A-60X60	Sprocket	2"	14.761"	60	X



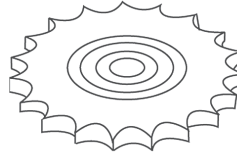
Sprockets

PART	DESC.	[I.D.]	[O.D.]	[teeth]	HUB REQUIRED
A-80W09	Sprocket	1 5/8"	3.347"	9	W
A-80W10	Sprocket	1 5/8"	3.678"	10	W
A-80W11	Sprocket	1 5/8"	4"	11	W
A-80X12	Sprocket	1 5/8"	4.332"	12	W
A-80X13	Sprocket	2"	4.657"	13	W
A-80X14	Sprocket	1 5/8"	4.982"	14	W
A-80X15	Sprocket	2"	5.305"	15	X
A-80X16	Sprocket	2"	5.627"	16	X
A-80X17	Sprocket	2"	5.95"	17	X
A-80X18	Sprocket	2"	6.271"	18	X
A-80X19	Sprocket	2"	6.593"	19	X
A-80X20	Sprocket	2"	6.914"	20	X
A-80X21	Sprocket	2"	7.235"	21	X
A-80X22	Sprocket	2"	7.555"	22	X
A-80X23	Sprocket	2"	7.875"	23	X
A-80X24	Sprocket	2"	8.196"	24	X
A-80X25	Sprocket	2"	8.516"	25	X
A-80X26	Sprocket	2"	8.836"	26	X
A-80X27	Sprocket	2"	9.156"	27	X
A-80X28	Sprocket	2"	9.475"	28	X
A-80X29	Sprocket	2"	9.795"	29	X
A-80X30	Sprocket	2"	10.114"	30	X
A-80X32	Sprocket	2"	10.753"	32	X
A-80X33	Sprocket	2"	11.072"	33	X
A-80X34	Sprocket	2"	11.392"	34	X
A-80X35	Sprocket	2"	11.711"	35	X
A-80X36	Sprocket	2"	12.03"	36	X
A-80X38	Sprocket	2"	12.668"	38	X
A-80X40	Sprocket	2"	13.306"	40	X
A-80X42	Sprocket	2"	14.104"	42	X
A-80X45	Sprocket	2"	14.901"	45	X
A-80X48	Sprocket	2"	15.857"	48	X
A-80X54	Sprocket	2"	17.769"	54	X
A-80X60	Sprocket	2"	19.681"	60	X
A-80Y60	Sprocket				

Parts are not Original Equipment parts and are not sponsored, affiliated or otherwise connected with any major brand.

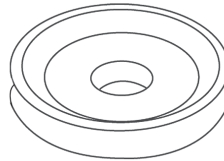
Idler Sprockets

Idler Sprockets



PART	DESCRIPTION	[chain size]	[teeth]	BORE
A-IS401858	Idler Sprocket	40	17	5/8" bearing
A-IS401812	Idler Sprocket	40	17	1/2" bearing
A-IS501712	Idler Sprocket	50	17	1/2" bearing
A-IS501758	Idler Sprocket	50	17	5/8" bearing
A-IS601512	Idler Sprocket	60	15	1/2" bearing
A-IS601558	Idler Sprocket	60	15	5/8" bearing

Pulleys

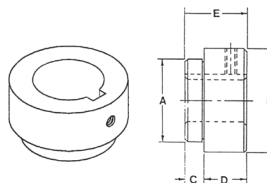


These pulleys can be used with either A or B width belts.

PART	DESCRIPTION	[O.D.]	HUB REQUIRED
A-PLV2-12	Pulley	2.5"	V
A-PLV3	Pulley	3"	V
A-PLW3-12	Pulley	3.5"	W
A-PLW4	Pulley	4"	W
A-PLW4-12	Pulley	4.5"	W
A-PLW5	Pulley	5"	W
A-PLW5-12	Pulley	5.5"	W
A-PLW6	Pulley	6"	W
A-PLW6-12	Pulley	6.5"	W
A-PLW7	Pulley	7"	W
A-PLW8	Pulley	8"	W
A-PLW9	Pulley	9"	W
A-PLW10	Pulley	10"	W
A-PLW11	Pulley	11"	W
A-PLW12	Pulley	12"	W
A-PLW14	Pulley	14"	W
A-PLW16	Pulley	16"	W

Parts are not Original Equipment parts and are not sponsored, affiliated or otherwise connected with any major brand.

Hubs



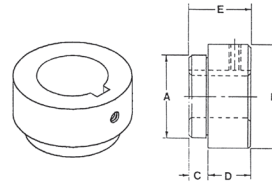
weld-on hub for use w/ sprockets or pulleys

Parts are not Original Equipment parts and are not sponsored, affiliated or otherwise connected with any major brand.

PART	DESCRIPTION	BORE	DIM A	DIM B	DIM C	DIM D	KEYWAY
A-RBXX1-58	Hub	1 5/8" Round					
A-RBV12	V Hub	1/2" round	1-1/8"	1-7/16"	7/16"	3/4"	1/8" X 1/16"
A-RBV916	V Hub	9/16" round	1-1/8"	1-7/16"	7/16"	3/4"	1/8" X 1/16"
A-RBV58	V Hub	5/8" round	1-1/8"	1-7/16"	7/16"	3/4"	3/16" X 3-3/32"
A-RBV34	V Hub	3/4"	1-1/8"	1-7/16"	7/16"	3/4"	3/16" x 3-3/32"
A-RBV78	V Hub	7/8"	1-1/8"	1-7/16"	7/16"	3/4"	3/16" x 3-3/32"
A-RBV1116	V Hub	11/16"	1-1/8"	1-7/16"	7/16"	3/4"	3/16" x 3-3/32"
A-RBV1316	V Hub	13/16" round	1-1/8"	1-7/16"	7/16"	3/4"	3/16" X 3-3/32"
A-RBW12	W Hub	1/2" round	1-5/8"	1-13/16"	7/16"	1"	1/8" X 1/16"
A-RBW916	W Hub	9/16" round	1-5/8"	1-13/16"	7/16"	1"	1/8" X 1/16"
A-RBW58	W Hub	5/8" round	1-5/8"	1-13/16"	7/16"	1"	3/16" X 3-3/32"
A-RBW1116	W Hub	11/16" round	1-5/8"	1-13/16"	7/16"	1"	3/16" X 3-3/32"
A-RBW34	W Hub	3/4" round	1-5/8"	1-13/16"	7/16"	1"	3/16" X 3-3/32"
A-RBW1316	W Hub	13/16 round	1-5/8"	1-13/16"	7/16"	1"	3/16" X 3-3/32"
A-RBW78	W Hub	7/8" round	1-5/8"	1-13/16"	7/16"	1"	3/16" X 3-3/32"
A-RBW1516	W Hub	15/16" round	1-5/8"	1-13/16"	7/16"	1"	1/4" X 1/8"
A-RBW1	W Hub	1" round	1-5/8"	1-13/16"	7/16"	1"	1/4" X 1/8"
A-RBW1-116	W Hub	1-1/16" round	1-5/8"	1-13/16"	7/16"	1"	1/4" X 1/8"
A-RBW1-18	W Hub	1-1/8"	1-5/8"	1-13/16"	7/16"	1"	1/4" x 1-1/4"
A-RBW1-316	W Hub	1-3/16" round	1-5/8"	1-13/16"	7/16"	1"	1/4" X 1/8"
A-RBW1-14	W Hub	1-1/4" round	1-5/8"	1-13/16"	7/16"	1"	1/4" X 1/8"
A-SBW1-38X6	W Hub	1 3/8" 6 Spline					
A-SBW1-18X6	W Hub						
A-RBX58	X Hub	5/8" round	2"	2-1/2"	7/16"	1"	3/16" X 3-3/32"
A-RBX34	X Hub	3/4" round	2"	2-1/2"	7/16"	1"	3/16" X 3-3/32"
A-RBX1116	X Hub	1-1/16"	2"	2-1/2"	7/16"	1"	1/4" x 1/8"
A-RBX1316	X Hub	13/16" round	2"	2-1/2"	7/16"	1"	3/16" X 3-3/32"
A-RBX78	X Hub	7/8" round	2"	2-1/2"	7/16"	1"	3/16" X 3-3/32"
A-RBX1516	X Hub	15/16" round	2"	2-1/2"	7/16"	1"	1/4" X 1/8"
A-RBX1	X Hub	1" round	2"	2-1/2"	7/16"	1"	1/4" X 1/8"
A-RBX1-116	X Hub	1-1/16" round	2"	2-1/2"	7/16"	1"	1/4" X 1/8"
A-RBX1-18	X Hub	1-1/8" round	2"	2-1/2"	7/16"	1"	1/4" X 1/8"
A-RBX1-316	X Hub	1-3/16" round	2"	2-1/2"	7/16"	1"	1/4" X 1/8"
A-RBX1-14	X Hub	1-1/4" round	2"	2-1/2"	7/16"	1"	1/4" X 1/8"
A-RBX1-516	X Hub	1-5/16" round	2"	2-1/2"	7/16"	1"	3X8" X 3/16"
A-RBX1-38	X Hub	1-3/8" round	2"	2-1/2"	7/16"	1"	3X8" X 3/16"
A-RBX1-716	X Hub	1-7/16" round	2"	2-1/2"	7/16"	1"	3X8" X 3/16"

Hubs

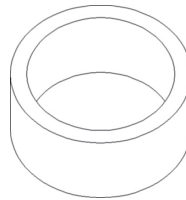
Hubs



weld-on hub for use w/ sprockets or pulleys

PART	DESCRIPTION	BORE	DIM A	DIM B	DIM C	DIM D	KEYWAY
A-RBX1-12	X Hub	1-1/2" round	2"	2-1/2"	7/16"	1"	3X8" X 3/16"
A-RBX1-58	X Hub	1-5/8" round	2"	2-1/2"	7/16"	1"	3x8" X 3/16"
A-SQW34	X Hub	3/4" square					
A-SQW1	X Hub	1" square					
A-SQX78	X Hub	7/8" square					
A-SQX1	X Hub	1" square					
A-SQX1-14	X Hub	1-1/4" square					
A-SBX1-18X6	X Hub	1-1/8" 6 spline					
A-SBX1-38X6	X Hub	1-3/8" 6 spline					
A-SBX1-38X21	X Hub	1-3/8" 21 spline					
A-IHW58	W Hub, Idler Hub <i>Includes a bushing so it can be used on applications that require 1/2" bolt</i>	5/8"					
A-IHX58	X Hub, Idler Hub	5/8"					
A-RBY1-78	Hub, 1 7/8" Round Bore						

Hubs



PART	DESCRIPTION	DIM A (1)	DIM B (2)	DIM C (3)	DIM D (4)
A-CH1582 G & G # 012-3226	Coupler Hub, W Series	1.625" I.D.	2.00" O.D.	1.00" Width	W Series
A-CH2212 G & G # 012-4032	Coupler Hub, X Series	2.000" I.D.	2.500" O.D.	1.00" Width	X Series

Parts are not Original Equipment parts and are not sponsored, affiliated or otherwise connected with any major brand.