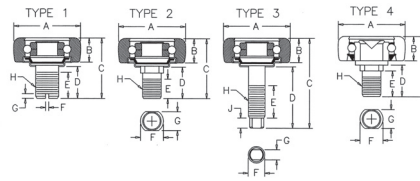


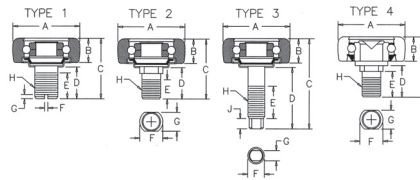
# CAM FOLLOWER BEARINGS

## Cam Follower Bearings



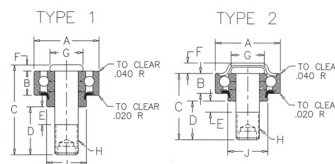
Part	Description	BRG TYPE	A	B	C	D	E	F
A-CF108S4F6	Bearing, Cam Follower	3	1 1/2	5/8	1.40625	0.78125	0.375	24 UNF2A 0.50 HEX
A-CF108S10F	Bearing, Cam Follower	4	1 1/2	5/8	1.75	0.8125	0.50	20 UNF2A -
A-CF110S8F10	Bearing, Cam Follower		1 1/2	7/8	1.1875	0.75	0.83	18 UNF2A -
A-CF6888	Bearing, Cam Follower	4	1 3/4	3/4	1.71875	0.75	.375-.378	-
A-CF7811E	Bearing, Cam Follower	3	1 1/2	5/8	2.03125	1.0625	0.50	20 UNF2A 0.3125 HEX
A-CF7811	Bearing, Cam Follower	3	1 1/2	5/8	2.03125	1.0625	0.50	20 UNF2A 0.3125 HEX
A-CF9727	Bearing, Cam Follower		1 3/4	3/4	2.125	1.00	0.50	20 UNF2A 0.3125 HEX

## Plunger Roller Bearings



Part	Description	BRG TYPE	A	B	C	D	E	F	G
A-6901P	Plunger Roller Bearing	4	2.5	0.888	2.25	1.15625	0.8125	1	0.75
A-6901PW	Plunger Roller Bearing	4	2.5	1.125	2.484375	1.15625	0.8125	1	0.75
A-6901M	Plunger Roller Bearing	2	2.5	0.888	2.25	1.15625	0.8125	1	0.795
A-6901S	Plunger Roller Bearing	2	2.5	0.888	2.25	1.1875	0.8125	1	0.75
A-PR6956	Plunger Roller Bearing	1	2.5	0.888	2.21875	1.166	0.9375	0.157	0.16

## Tine Bar Bearings



Part	Description	A	B	C	D	E	F	G
A-TB7890	Tine Bar Bearings	1.8504	0.551	2.125	1.3125	0.375	0.207	1.08
A-7890A	Tine Bar Bearings	1.8504	0.551	2.35	1.296875	0.5625	0.21	1.12

Parts are not Original Equipment parts and are not sponsored, affiliated or otherwise connected with any major brand.