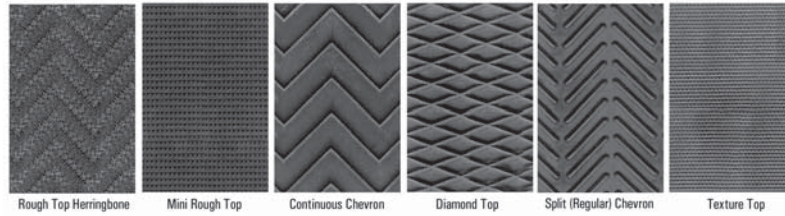


Bale Throwing Belting

Bale Throwing Belting



Parts are not original equipment parts and are not sponsored, affiliated, or otherwise connected with any major brand.

Allis-Chalmers

MODELS	PART	SIZE (in Inches)	PLY/TEXTURE	# BELTS	REPLACES
301, 44	A-1002974	11.5" x 50.5"	2 Ply Diamond Top	2	

Case-IH

MODELS	PART	SIZE (in Inches)	PLY/TEXTURE	# BELTS	REPLACES
SBX520, SBX530, SBX540	A-1003424	12" x 71.5"	2 Ply Diamond Top		

Challenger

MODELS	PART	SIZE (in Inches)	PLY/TEXTURE	# BELTS	REPLACES
SB34, SB36	A-1003424	12" x 71.5"	2 Ply Diamond Top		

Ford / New Holland

MODELS	PART	SIZE (in Inches)	PLY/TEXTURE	# BELTS	REPLACES
SEVERAL	A-1002283	12" x 52.25"	2 Ply Diamond Top	2	
70	A-1002285	12" x 81"	2 Ply Diamond Top	2	
72	A-1003424	12" x 71.5"	2 Ply Diamond Top	2	

Hesston

MODELS	PART	SIZE (in Inches)	PLY/TEXTURE	# BELTS	REPLACES
SEVERAL	A-1002284	12" x 64.5"	2 Ply Diamond Top	2	

Massey Ferguson

MODELS	PART	SIZE (in Inches)	PLY/TEXTURE	# BELTS	REPLACES
SEVERAL	A-1002284	12" x 64.5"	2 Ply Diamond Top	2	

New Idea

MODELS	PART	SIZE (in Inches)	PLY/TEXTURE	# BELTS	REPLACES
6345, 6364, 6445	A-700716010	3.5 X 43.31	3 Ply MRT		
6365, 6465	A-700717714	3.5 X 58.5	3 Ply MRT		
7205, 7210, 7215	A-1003424	12" x 71.5"	2 Ply Diamond Top		

Welger

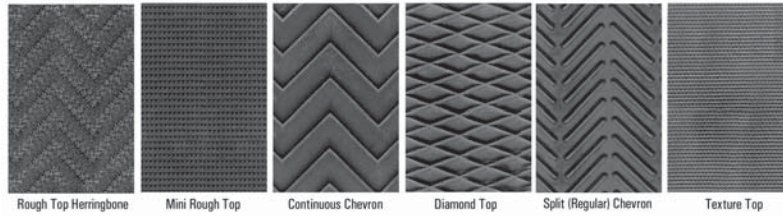
MODELS	PART	SIZE (in Inches)	PLY/TEXTURE	# BELTS	REPLACES
SEVERAL	A-1003425	11.75" x 82"	2 Ply Diamond Top	2	

White/ Oliver/ Mpl Moline

MODELS	PART	SIZE (in Inches)	PLY/TEXTURE	# BELTS	REPLACES
SEVERAL	A-1002284	12" x 64.5"	2 Ply Diamond Top	2	

Baler Starter Flaps

Baler Starter Flaps



Case-IH						
MODELS	PART	SIZE (in Inches)	PLY/TEXTURE	FLAPS/BALER	REPLACES	
RBX451, RBX452, RBX461, RBX462	A-86548821	7 X 44.9	3 Ply MRT			
RBX551, RBX552, RBX561, RBX562	A-86548820	7 X 59.8	3 Ply MRT			
RBX451, RBX452, RBX461, RBX462	A-9848760	5 X 44.9	3 Ply MRT			
RBX551, RBX552, RBX561, RBX562	A-9848759	5 X 59.8	3 Ply MRT			
845, 8450	A-1003286	3.5 X 46.22	3 Ply Various	4		700711998
846, 8460	A-1003285	3.5 X 61.18	3 Ply Various	4		700711997
RS451	A-700716010	3.5 X 43.31	3 Ply MRT			
RS551, RS561	A-700717714	3.5 X 58.5	3 Ply MRT			
Hesston						
MODELS	PART	SIZE (in Inches)	PLY/TEXTURE	FLAPS/BALER	REPLACES	
550, 555	A-1003286	3.5 X 46.22	3 Ply Various	4		700711998
560	A-1003285	3.5 X 61.18	3 Ply Various	4		700711997
845, 846, 945, 946	A-700716010	3.5 X 43.31	3 Ply MRT			
855, 856, 955, 956	A-700717714	3.5 X 58.5	3 Ply MRT			
Massey Ferguson						
MODELS	PART	SIZE (in Inches)	PLY/TEXTURE	FLAPS/BALER	REPLACES	
1550, 1560, 1565	A-1003284	3 X 58.625	3 Ply Various	4		138001
1440, 1450, 1455	A-1003283	3 X 43.625	3 Ply Various	4		1959001
Vermeer						
MODELS	PART	SIZE (in Inches)	PLY/TEXTURE	FLAPS/BALER	REPLACES	
403F, 403G	A-1003282	3 X 32.625	3 Ply Various	4		5444001
504F, 504G, 504H	A-1003283	3 X 43.625	3 Ply Various	4		1959001
605F, 605G, 605H	A-1003284	3 X 58.625	3 Ply Various	4		138001

BELTING ACCESSORIES

Clipper			
PART	DESCRIPTION	NOTES	UNIT
A-1002206	4.5-3 RHTX Lacing Hooks	Used on 2Ply Belting. 84 Hooks/Card, 12" Card, 12 Cards/Box	box
A-1002208	4.5 RHTX Lacing Hooks	Used on 3Ply Belting. 84 Hooks/Card, 12" Card, 12 Cards/Box	box
A-1701199	4.5 RHTX Lacing Hooks	7" Cards, 18 Cards/Box	box
A-1701399	#3 Galvanized Round Hook with pins	12" Card, 12 Cards/Box	box
A-1701400	#4 Galvanized Round Hook with pins	12" Card, 12 Cards/Box	box
A-1701401	#5 Galvanized Round Hook with pins	12" Card, 12 Cards/Box	box
A-1701402	#6 Galvanized Round Hook with pins	12" Card, 12 Cards/Box	box

Parts are not original equipment parts and are not sponsored, affiliated, or otherwise connected with any major brand.

Belting Accessories

BELTING ACCESSORIES

Clipper			
PART	DESCRIPTION	NOTES	UNIT
A-01251	U3 Hooks Coated Steel	12" Card, 12 Cards/Box	box
A-01279	U4 Hooks Coated Steel	12" Card, 12 Cards/Box	box
A-01301	U5 Hooks, Coated Steel	12" Card, 12 Cards/Box	box
A-02189	Fastener, 12" - 3 HT (High Tensile)	12" Card, 12 Cards/Box	box
A-01661	Fastener, 4" - 4.5 HT (High Tensile)	4" Card, 66 Cards/Box	box
A-02307	4.5- High Tensile Lacing	12" Card, 12 Cards/Box	box
A-02316	4.5-3 High Tensile Lacing	12" Card, 12 Cards/Box	box
A-1002886	4.5-3 RHTX Clipper Lacing Hooks	26 Hooks/Card, 4" Card, 4 Cards/Pkg	pkg
A-1002903	4.5-3 RHTX Clipper Lacing Hooks	10 Pkgs / Master Box - 4" RHTX	box
A-1002888	4.5 RHTX Clipper Lacing Hooks	45 Hooks/Card, 7" Card, 4 Cards/Pkg	pkg
A-1002905	4.5 RHTX Clipper Lacing Hooks	8 Pkgs / Master box - 7" RHTX	box
A-1002887	4.5-3 RHTX Clipper Lacing Hooks	67 Hooks/Card, 10" Card, 4 Cards/Pk	pkg.
Titan			
PART	DESCRIPTION	NOTES	UNIT
A-1701491	Titan 05 Hvy Plates - for 7" belts	12 cards & 6 connecting cables per box	box
A-1701499	Titan 05 Installation (vice) tool	7"	each
A-1701540	Nylon Conversion Cable	25' coil for Titan	pkg.
A-1701537	Nylon Conversion Cable	300' coil for Titan	pkg.
A-1701565	05 SS Pin	6.375	each
Mato Splice / Heavy Plate			
PART	DESCRIPTION	NOTES	UNIT
A-1701432	Lacing Heavy Plate 14 -7"		each
A-1701433	Pin Notched Spring Steel		5
A-1701567	Heavy Plate 17 Segment, Mato Splice		each
A-1701568	Pin Notched Spring Steel 7.87 (for 8.66" Class belts)		each
A-1701585	07 U20 PROF-14 (for John Deere 7" belts)		
A-1701587	U20 AIR HAMMER W/PUNCH		
Alligator			
PART	DESCRIPTION	NOTES	UNIT
A-1701481	Alligator Rivet Plate Lacing pkg.	4 - 4" strips, 2 pins, rivets for 2 splices	pkg.
A-1701482	Alligator Rivet Plate Lacing pkg.	4 - 7" strips, 2 pins, rivets for 2 splices	pkg.
A-1701483	Alligator Rivet Plate Lacing pkg.	4 - 10" strips, 2 pins, rivets for 2 splices	pkg.
A-1701484	Alligator Rivet Plate Lacing pkg.	4 - 14" strips, 2 pins, rivets for 2 splices	pkg.
A-1701479	Alligator Application Tool	7"	each
A-1701480	Alligator Application Tool- 14"	14"	each
A-15025	7" Multiple Rivet Installation Kit	includes: tool, guide block, pneumatic & hand punches	each
A-15026	14" Multiple Rivet Installation Tool Kit		
A-15032	7" Complete Rivet Tool Kit	Tool, Air Hammer, Guide Block, 2 Air Punches, 1 Hand Punch, Carrying Case	each

Parts are not original equipment parts and are not sponsored, affiliated, or otherwise connected with any major brand.

Belting Accessories

Parts are not original equipment parts and are not sponsored, affiliated, or otherwise connected with any major brand.

Alligator			
PART	DESCRIPTION	NOTES	UNIT
A-15011	Alligator Replacement Rivets	15 per pkg.	pkg.
A-14990	Alligator Replacement 4" Hinge Pins	9 per pkg.	pkg.
A-14992	Alligator Replacement 7" Hinge Pins	8 per pkg.	pkg.
A-14993	Alligator Replacement 10" Hinge Pins	4 per pkg.	pkg.
A-54518	Alligator 125 RS Lacing	2-18" Strips w/Staples,Cable, & Washers	set
A-54520	Alligator 125 RS Lacing	2-24" Strips w/ Staples, 4 Cables, Washers	set
A-54553	Fastener, Alligator #125 RS Stainless Steel	4-18" Strips w/ Staples, 4 Cables, Washers	set
A-54555	Fastener, Alligator #125 RS Stainless Steel	4-24" Strips w/ Staples, 4 Cables, Washers	set
A-1700006	Alligator 125 Nylon Covered Cable		foot
A-54593	#187 RS Lacing	4-30" Strips W/Staples, 4 Cables & Washers	set
A-1700005	Alligator 187 Nylon Covered Cable		foot
A-54626	2" Installation Tool, Alligator Fastener, RSC187		
A-54627	4" Installation Tool, Alligator Fastener, RSC187-4		
A-54628	6" Installation Tool, Alligator Fastener, RSC187-6		
A-54629	12" Installation Tool, Alligator Fastener, RSC187-12		
A-54631	24" Installation Tool, Alligator Fastener, RSC187-24		
A-50053	Alligator Retaining Washers for #125	50 / Package	pkg.
A-50075	Alligator Retaining Washers for #187	50 / Package	pkg.
A-1701354	Alligator 187 RS Lacing	2-30" Strips w/Staples,Cable, & Washers	set
A-1701406	Alligator 6" Installation Kit, 125 & 187	Installation Tool;Staple Set Plate;Skiver	each
A-1701405	Alligator 12" Installation Kit, 125 & 187	Marker, Nippers, Hammer, Staple Dispenser	each
Flexco			
PART	DESCRIPTION	NOTES	UNIT
A-41616	Flexco R2, R2-30 / 750 Steel Fastener	30" / 750mm (2 fastener strips)	pkg.
A-40455	Flexco R2, R2T Application Tool	12" / 300 mm	each
A-40510	Flexco R2, SR-50 Single Rivet Driver	complete tool	each
A-40348	Flexco R2, R5S Rivet Set		each
A-40539	Flexco R2, SRA-100 Steel Rivets	100 / Box	box
A-1701427	Flexco R2, Hinge Pin NC-30-1	Steel Cable 30"	each
A-40135	Flexco R2, Retaining Washers Hinge Pins	50 / Package	pkg.
Unibar Fastener			
PART	DESCRIPTION	NOTES	UNIT
A-1700466	Unibar U3-2 Coated Steel Hook	84 Hooks/Card; 12" Card, 12 Cards / Box	box
Lacer & Lacing Accessories			
PART	DESCRIPTION	NOTES	UNIT
A-1001859	Vice Lacer	4"	each
A-1001449	Vice Lacer	7"	each
A-1001450	Vice Lacer	10"	each
A-1701197	Power Lever Lacer	7"	each
A-1701194	Power Lever Lacer	10"	each

Belting Accessories

Lacer & Lacing Accessories

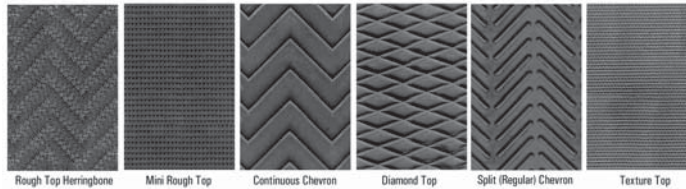
PART	DESCRIPTION	NOTES	UNIT
A-1002292	Microlacer	Without face strips / 14"	each
A-03274	Replacement Urethane Strip	For Roller Lacers & Micro Lacers	
A-1002201	Roller Lacer w/Access.kit	Without face strips / 36"	each
A-03431	#4.5 - #7 Facestrip	12"	each
A-1701359	#1 Facestrip	14"	each
A-1701360	#2-#4 Facestrip	14"	each
A-1701361	#4.5 - #7 Facestrip	14"	each
A-1701362	#1 Facestrip	36"	each
A-1701364	#4.5 - #7 Facestrip	36"	each
A-1001980	#12 Manual Lacer	Includes Lacer Accessory Kit	
A-1001979	#12 Electric Lacer	115 V with 1-1/2 H.P. Motor, including Lacer Accessory Kit	
A-1701092	Belt Skiver		
A-1700067	Smart Locks		
A-1701196	Smart Lock Kit	Kit Contains: 20 Smart Locks & 5 ' Of #12 Duralink Cable	
A-1701195	Belt Cutter	14"	
A-1000497	Belt Maintenance Kit	14" belt cutter, 7" lacer, skiver, 2 boxes 7" hooks	
A-1701489	Blade, 14" Replacement, Belt lacer		
A-1701490	Nylon Block		
A-1002203	Lacing Kit	incl: hook gauge, paper remover, scissors, skiver	
A-1002207	#12 Nylon Covered Pin	25' spool	
A-1700071	#12 Duralink Cable	25' spool	
A-01881	Pin Assembly	44.25"	
A-01880	Pin Assembly	60"	
A-1003958	4" Traction Tape, 15' Roll		
A-1701606	4" Traction Tape, 60' Roll		

Miscellaneous

PART	DESCRIPTION	NOTES	UNIT
A-411296963	7" H2O Eco Field Tool		
A-411296961	7" H2O Profi Installation Field Tool		
A-411296962	14" H2O Profi Installation Field Tool		
A-411156069	H24BS 14 Segment (for 7" John Deere Belts)		
A-411155897	H24BS 14 Segment Box of 12 (for 7" John Deere Belts)		
A-411152404	H24BS 17 Segment (for 8.66" Class Belts)		
A-411152403	H24BS 30 Segment (for 14" Belts)		
A-411295825	Hand Punch		

Parts are not original equipment parts and are not sponsored, affiliated, or otherwise connected with any major brand.

Bulk Baler & Conveyor Belting



PART	ROLL WIDTH	PLY/TEXTURE	DESCRIPTION
A-1000192100	4 in.	2Ply Texture Top	100 ft. Bulk Belting
A-1000192300	4 in.	2Ply Texture Top	300 ft. Bulk Belting
A-1000258100	4.75 in.	2Ply Texture Top	100 ft. Bulk Belting
A-1000258300	4.75 in.	2Ply Texture Top	300 ft. Bulk Belting
A-1000536100	5 in.	2Ply Texture Top	100 ft. Bulk Belting
A-1000536300	5 in.	2Ply Texture Top	300 ft. Bulk Belting
A-1000535100	5.3 in.	2Ply Texture Top	100 ft. Bulk Belting
A-1000535300	5.3 in.	2Ply Texture Top	300 ft. Bulk Belting
A-1000534100	5.5 in.	2Ply Texture Top	100 ft. Bulk Belting
A-1000534300	5.5 in.	2Ply Texture Top	300 ft. Bulk Belting
A-1000193100	6 in.	2Ply Texture Top	100 ft. Bulk Belting
A-1000193300	6 in.	2Ply Texture Top	300 ft. Bulk Belting
A-1002047100	6.5 in.	2Ply Texture Top	100 ft. Bulk Belting
A-1002047300	6.5 in.	2Ply Texture Top	300 ft. Bulk Belting
A-1002048100	7 in.	2Ply Texture Top	100 ft. Bulk Belting
A-1002048300	7 in.	2Ply Texture Top	300 ft. Bulk Belting
A-1000537100	8 in.	2Ply Texture Top	100 ft. Bulk Belting
A-1000537300	8 in.	2Ply Texture Top	300 ft. Bulk Belting
A-1000653100	9 in.	2Ply Texture Top	100 ft. Bulk Belting
A-1000653300	9 in.	2Ply Texture Top	300 ft. Bulk Belting
A-1000194100	10 in.	2Ply Texture Top	100 ft. Bulk Belting
A-1000194300	10 in.	2Ply Texture Top	300 ft. Bulk Belting
A-1000654100	11 in.	2Ply Texture Top	100 ft. Bulk Belting
A-1000654300	11 in.	2Ply Texture Top	300 ft. Bulk Belting
A-1000196100	12 in.	2Ply Texture Top	100 ft. Bulk Belting
A-1000196300	12 in.	2Ply Texture Top	300 ft. Bulk Belting
A-1002590100	14 in.	2Ply Texture Top	100 ft. Bulk Belting
A-1002590300	14 in.	2Ply Texture Top	300 ft. Bulk Belting
A-1002236100	16 in.	2Ply Texture Top	100 ft. Bulk Belting
A-1002236300	16 in.	2Ply Texture Top	300 ft. Bulk Belting
A-1002237100	18 in.	2Ply Texture Top	100 ft. Bulk Belting
A-1002237300	18 in.	2Ply Texture Top	300 ft. Bulk Belting
A-1003198100	12 in.	2Ply Diamond Top	100 ft. Bulk Belting
A-1003198300	12 in.	2Ply Diamond Top	300 ft. Bulk Belting
A-1003527100	13 in.	2Ply Diamond Top	100 ft. Bulk Belting
A-1003527300	13 in.	2Ply Diamond Top	300 ft. Bulk Belting
A-1003528100	15 in.	2Ply Diamond Top	100 ft. Bulk Belting

Parts are not original equipment parts and are not sponsored, affiliated, or otherwise connected with any major brand.

Bulk Baler & Conveyor Belting

Parts are not original equipment parts and are not sponsored, affiliated, or otherwise connected with any major brand.

PART	ROLL WIDTH	PLY/TEXTURE	DESCRIPTION
A-1003528300	15 in.	2Ply Diamond Top	300 ft. Bulk Belting
A-1003558100	18 in.	2Ply Diamond Top	100 ft. Bulk Belting
A-1003558300	18 in.	2Ply Diamond Top	300 ft. Bulk Belting
A-1003529100	20 in.	2Ply Diamond Top	100 ft. Bulk Belting
A-1003529300	20 in.	2Ply Diamond Top	300 ft. Bulk Belting
A-1003559100	22 in.	2Ply Diamond Top	100 ft. Bulk Belting
A-1003559300	22 in.	2Ply Diamond Top	300 ft. Bulk Belting
A-1003560100	24 in.	2Ply Diamond Top	100 ft. Bulk Belting
A-1003560300	24 in.	2Ply Diamond Top	300 ft. Bulk Belting
A-1000197100	4 in.	3Ply Texture Top	100 ft. Bulk Belting
A-1000197300	4 in.	3Ply Texture Top	300 ft. Bulk Belting
A-1000259100	4.75 in.	3Ply Texture Top	100 ft. Bulk Belting
A-1000259300	4.75 in.	3Ply Texture Top	300 ft. Bulk Belting
A-1000681100	5 in.	3Ply Texture Top	100 ft. Bulk Belting
A-1000681300	5 in.	3Ply Texture Top	300 ft. Bulk Belting
A-1000682100	5.3 in.	3Ply Texture Top	100 ft. Bulk Belting
A-1000682300	5.3 in.	3Ply Texture Top	300 ft. Bulk Belting
A-1002049100	5.5 in.	3Ply Texture Top	100 ft. Bulk Belting
A-1002049300	5.5 in.	3Ply Texture Top	300 ft. Bulk Belting
A-1000198100	6 in.	3Ply Texture Top	100 ft. Bulk Belting
A-1000198300	6 in.	3Ply Texture Top	300 ft. Bulk Belting
A-1002050100	6.5 in.	3Ply Texture Top	100 ft. Bulk Belting
A-1002050300	6.5 in.	3Ply Texture Top	300 ft. Bulk Belting
A-1001854100	7 in.	3 ply Texture Top	100 ft. Bulk Belting
A-1001854300	7 in.	3 ply Texture Top	300 ft. Bulk Belting
A-1000200100	8 in.	3Ply Texture Top	100 ft. Bulk Belting
A-1000200300	8 in.	3Ply Texture Top	300 ft. Bulk Belting
A-1000683100	9 in.	3Ply Texture Top	100 ft. Bulk Belting
A-1000683300	9 in.	3Ply Texture Top	300 ft. Bulk Belting
A-1000199100	10 in.	3Ply Texture Top	100 ft. Bulk Belting
A-1000199300	10 in.	3Ply Texture Top	300 ft. Bulk Belting
A-1000684100	11 in.	3Ply Texture Top	100 ft. Bulk Belting
A-1000684300	11 in.	3Ply Texture Top	300 ft. Bulk Belting
A-1000202100	12 in.	3Ply Texture Top	100 ft. Bulk Belting
A-1000202300	12 in.	3Ply Texture Top	300 ft. Bulk Belting
A-1002592100	14 in.	3Ply Texture Top	100 ft. Bulk Belting
A-1002592300	14 in.	3Ply Texture Top	300 ft. Bulk Belting
A-1002238100	16 in.	3Ply Texture Top	100 ft. Bulk Belting
A-1002238300	16 in.	3Ply Texture Top	300 ft. Bulk Belting
A-1002239100	18 in.	3Ply Texture Top	100 ft. Bulk Belting
A-1002239300	18 in.	3Ply Texture Top	300 ft. Bulk Belting

Bulk Baler & Conveyor Belting

PART	ROLL WIDTH	PLY/TEXTURE	DESCRIPTION
A-1002302100	4 in.	3Ply Mini Rough	100 ft. Bulk Belting
A-1002302300	4 in.	3Ply Mini Rough	300 ft. Bulk Belting
A-1002303100	4.75 in.	3Ply Mini Rough	100 ft. Bulk Belting
A-1002240100	5 in.	3Ply Mini Rough	100 ft. Bulk Belting
A-1002240300	5 in.	3Ply Mini Rough	300 ft. Bulk Belting
A-1002304100	5.3 in.	3Ply Mini Rough	100 ft. Bulk Belting
A-1002304300	5.3 in.	3Ply Mini Rough	300 ft. Bulk Belting
A-1002241100	5.5 in.	3Ply Mini Rough	100 ft. Bulk Belting
A-1002241300	5.5 in.	3Ply Mini Rough	300 ft. Bulk Belting
A-1002242100	6 in.	3Ply Mini Rough	100 ft. Bulk Belting
A-1002242300	6 in.	3Ply Mini Rough	300 ft. Bulk Belting
A-1002243100	6.5 in.	3Ply Mini Rough	100 ft. Bulk Belting
A-1002243300	6.5 in.	3Ply Mini Rough	300 ft. Bulk Belting
A-1002244100	7 in.	3Ply Mini Rough	100 ft. Bulk Belting
A-1002244300	7 in.	3Ply Mini Rough	300 ft. Bulk Belting
A-1002979100	7 in.	special .315 thick MRT	100 ft. Bulk Belting
A-1002979300	7 in.	special .315 thick MRT	300 ft. Bulk Belting
A-1002245100	8 in.	3Ply Mini Rough	100 ft. Bulk Belting
A-1002245300	8 in.	3Ply Mini Rough	300 ft. Bulk Belting
A-1002246100	9 in.	3Ply Mini Rough	100 ft. Bulk Belting
A-1002246300	9 in.	3Ply Mini Rough	300 ft. Bulk Belting
A-1001607100	10 in.	3Ply Mini Rough	100 ft. Bulk Belting
A-1001607300	10 in.	3Ply Mini Rough	300 ft. Bulk Belting
A-1002247100	11 in.	3Ply Mini Rough	100 ft. Bulk Belting
A-1002247300	11 in.	3Ply Mini Rough	300 ft. Bulk Belting
A-1002248100	12 in.	3Ply Mini Rough	100 ft. Bulk Belting
A-1002248300	12 in.	3Ply Mini Rough	300 ft. Bulk Belting
A-1002733100	14 in.	3Ply Mini Rough	100 ft. Bulk Belting
A-1002733300	14 in.	3Ply Mini Rough	300 ft. Bulk Belting
A-1002249100	16 in.	3Ply Mini Rough	100 ft. Bulk Belting
A-1002249300	16 in.	3Ply Mini Rough	300 ft. Bulk Belting
A-1002250100	18 in.	3Ply Mini Rough	100 ft. Bulk Belting
A-1002250300	18 in.	3Ply Mini Rough	300 ft. Bulk Belting
A-1001599100	4 in.	3Ply Rough Herringbone	100 ft. Bulk Belting
A-1001599300	4 in.	3Ply Rough Herringbone	300 ft. Bulk Belting
A-1002489100	6.5 in.	3Ply Rough Herringbone	100 ft. Bulk Belting
A-1002489300	6.5 in.	3Ply Rough Herringbone	300 ft. Bulk Belting
A-1002062100	7 in.	3Ply Rough Herringbone	100 ft. Bulk Belting
A-1002062300	7 in.	3Ply Rough Herringbone	300 ft. Bulk Belting
A-1002643100	12 in.	3Ply Rough Herringbone	100 ft. Bulk Belting
A-1002643300	12 in.	3Ply Rough Herringbone	300 ft. Bulk Belting

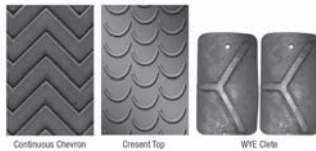
Parts are not original equipment parts and are not sponsored, affiliated, or otherwise connected with any major brand.

Bulk Baler & Conveyor Belting

Parts are not original equipment parts and are not sponsored, affiliated, or otherwise connected with any major brand.

PART	ROLL WIDTH	PLY/TEXTURE	DESCRIPTION
A-1002251100	4 in.	3Ply Diamond Top	100 ft. Bulk Belting
A-1002251300	4 in.	3Ply Diamond Top	300 ft. Bulk Belting
A-1002301100	7 in.	3Ply Diamond Top	100 ft. Bulk Belting
A-1002301360	7 in.	3Ply Diamond Top	300 ft. Bulk Belting
A-1002642100	12 in.	3Ply Diamond Top	100 ft. Bulk Belting
A-1002642300	12 in.	3Ply Diamond Top	300 ft. Bulk Belting
A-1000374100	4 in.	3Ply Chevron Top	100 ft. Bulk Belting
A-1000374300	4 in.	3Ply Chevron Top	300 ft. Bulk Belting
A-1003775100	6 in.	3Ply Chevron Top	100 ft. Bulk Belting
A-1003775300	6 in.	3Ply Chevron Top	300 ft. Bulk Belting
A-1003776100	6.5 in.	3Ply Chevron Top	100 ft. Bulk Belting
A-1003776300	6.5 in.	3Ply Chevron Top	300 ft. Bulk Belting
A-1003777100	7 in.	3Ply Chevron Top	100 ft. Bulk Belting
A-1003777300	7 in.	3Ply Chevron Top	300 ft. Bulk Belting
A-1002849100	4 in.	3Ply Continuous	100 ft. Bulk Belting
A-1002849300	4 in.	3Ply Continuous	300 ft. Bulk Belting
A-1002850100	5.3 in.	3Ply Continuous	100 ft. Bulk Belting
A-1002850300	5.3 in.	3Ply Continuous	300 ft. Bulk Belting
A-1002851100	6 in.	3Ply Continuous	100 ft. Bulk Belting
A-1002851300	6 in.	3Ply Continuous	300 ft. Bulk Belting
A-1002852100	6.5 in.	3Ply Continuous	100 ft. Bulk Belting
A-1002853100	7 in.	3Ply Continuous	100 ft. Bulk Belting
A-1002853300	7 in.	3Ply Continuous	300 ft. Bulk Belting
A-1003774100	4 in.	3Ply	Baler Belting, 4", 3 Ply Chevron (Regular) 100 Ft.
A-1003774300	4 in.	3Ply	Baler Belting, 4", 3 Ply Chevron (Regular) 300 Ft.

Conveyor Belting



PART	ROLL WIDTH	PLY/TEXTURE	DESCRIPTION
A-1005574	8"	2 Ply, "Ultimate I" Crescent Top Bareback	Bulk Conveyor Belting
A-1005672	10"	2 Ply, "Ultimate I" Crescent Top Bareback	Bulk Conveyor Belting
A-1005575	12"	2 Ply, "Ultimate I" Crescent Top Bareback	Bulk Conveyor Belting
A-1005673	13"	2 Ply, "Ultimate I" Crescent Top Bareback	Bulk Conveyor Belting
A-1005674	15"	2 Ply, "Ultimate I" Crescent Top Bareback	Bulk Conveyor Belting
A-1005577	16"	2 Ply, "Ultimate I" Crescent Top Bareback	Bulk Conveyor Belting
A-1005676	18"	2 Ply, "Ultimate I" Crescent Top Bareback	Bulk Conveyor Belting
A-1005677	20"	2 Ply, "Ultimate I" Crescent Top Bareback	Bulk Conveyor Belting
A-1005678	22"	2 Ply, "Ultimate I" Crescent Top Bareback	Bulk Conveyor Belting
A-1005679	24"	2 Ply, "Ultimate I" Crescent Top Bareback	Bulk Conveyor Belting
A-1005680	30"	2 Ply, "Ultimate I" Crescent Top Bareback	Bulk Conveyor Belting

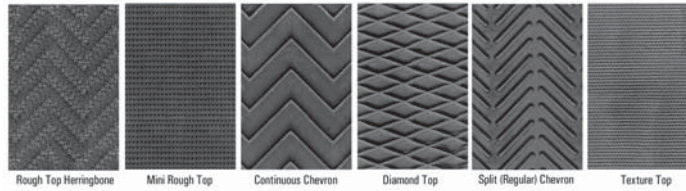
Bulk Baler & Conveyor Belting

PART	ROLL WIDTH	PLY/TEXTURE	DESCRIPTION
A-1005681	36"	2 Ply, "Ultimate I" Cresnet Top Bareback	Bulk Conveyor Belting
A-1005087100	8" X 100'	2Ply, .252 thick, Continuous Chevron "Ultimate I"	100', Bulk Tube Conveyor Belting
A-1005087600	8" X 600'	2Ply, .252 thick, Continuous Chevron "Ultimate I"	600', Bulk Tube Conveyor Belting
A-1005051100	10" X 100'	2Ply, .252 thick, Continuous Chevron "Ultimate I"	100', Bulk Tube Conveyor Belting
A-1005051600	10" X 600'	2Ply, .252 thick, Continuous Chevron "Ultimate I"	600', Bulk Tube Conveyor Belting
A-1005088100	12" X 100'	2Ply, .252 thick, Continuous Chevron "Ultimate I"	100', Bulk Tube Conveyor Belting
A-1005088600	12" X 600'	2Ply, .252 thick, Continuous Chevron "Ultimate I"	600', Bulk Tube Conveyor Belting
A-1005050100	13" X 100'	2Ply, .252 thick, Continuous Chevron "Ultimate I"	100', Bulk Tube Conveyor Belting
A-1005050600	13" X 600'	2Ply, .252 thick, Continuous Chevron "Ultimate I"	600', Bulk Tube Conveyor Belting
A-1005052100	15" X 100'	2Ply, .252 thick, Continuous Chevron "Ultimate I"	100', Bulk Tube Conveyor Belting
A-1005052600	15" X 600'	2Ply, .252 thick, Continuous Chevron "Ultimate I"	600', Bulk Tube Conveyor Belting
A-1005123100	16" X 100'	2Ply, .252 thick, Continuous Chevron "Ultimate I"	100', Bulk Tube Conveyor Belting
A-1005123600	16" X 600'	2Ply, .252 thick, Continuous Chevron "Ultimate I"	600', Bulk Tube Conveyor Belting
A-1005089100	18" X 100'	2Ply, .252 thick, Continuous Chevron "Ultimate I"	100', Bulk Tube Conveyor Belting
A-1005089600	18" X 600'	2Ply, .252 thick, Continuous Chevron "Ultimate I"	600', Bulk Tube Conveyor Belting
A-1005053100	20" X 100'	2Ply, .252 thick, Continuous Chevron "Ultimate I"	100', Bulk Tube Conveyor Belting
A-1005053600	20" X 600'	2Ply, .252 thick, Continuous Chevron "Ultimate I"	600', Bulk Tube Conveyor Belting
A-1005122100	22" X 100'	2Ply, .252 thick, Continuous Chevron "Ultimate I"	100', Bulk Tube Conveyor Belting
A-1005122600	22" X 600'	2Ply, .252 thick, Continuous Chevron "Ultimate I"	600', Bulk Tube Conveyor Belting
A-1005047100	24" X 100'	2Ply, .252 thick, Continuous Chevron "Ultimate I"	100', Bulk Tube Conveyor Belting
A-1005047600	24" X 600'	2Ply, .252 thick, Continuous Chevron "Ultimate I"	600', Bulk Tube Conveyor Belting
A-1005048100	30" X 100'	2Ply, .252 thick, Continuous Chevron "Ultimate I"	100', Bulk Tube Conveyor Belting
A-1005048600	30" X 600'	2Ply, .252 thick, Continuous Chevron "Ultimate I"	600', Bulk Tube Conveyor Belting
A-1005049100	36" x 100'	2Ply, .252 thick, Continuous Chevron "Ultimate I"	100', Bulk Tube Conveyor Belting
A-1005049600	36" X 600'	2Ply, .252 thick, Continuous Chevron "Ultimate I"	600', Bulk Tube Conveyor Belting
A-1005739100	30" X 100'	2 Ply, Cresnet Top Bareback	Bulk Conveyor Belting
A-1005049100	36" x 100'	2Ply, .252 thick, Continuous Chevron "Ultimate I"	Bulk Conveyor Belting
A-1005049600	36" X 600'	2Ply, .252 thick, Continuous Chevron "Ultimate I"	Bulk Conveyor Belting
A-1005776100	60" X 100'	2 Ply, "Ultimate" WYE-Cleat x 1/8 Cover	Bulk Conveyor Belting
A-1005775100	60" X 100'	2 Ply, "Ultimate" WYE-Cleat x Bareback	Bulk Conveyor Belting
A-1005776300	60" X 300'	2 Ply, "Ultimate" WYE-Cleat x 1/8 Cover	Bulk Conveyor Belting
A-1005774100	60" X 100'	3 Ply, "Ultimate" WYE-Cleat x 1/16 Cover	Bulk Conveyor Belting
A-1005443300	60" X 300'	3 Ply, "Ultimate" WYE-Cleat x Bareback	Bulk Conveyor Belting
A-1005774300	60" X 300'	3 Ply, "Ultimate" WYE-Cleat x 1/16 Cover	Bulk Conveyor Belting
A-1002766		2 Ply w/ 1.5" Cleat	24" Wide, 12" On Center
A-1005443100	60" X 100'	3 Ply, "Ultimate" WYE-Cleat x Bareback	Bulk Conveyor Belting

Parts are not original equipment parts and are not sponsored, affiliated, or otherwise connected with any major brand.

Pull Type Swather Belting

Pull Type Swather Belting



Autotran					
MODELS	PART	CUT	SIZE	CLEAT TYPE	REPLACES
	A-1001407	21' & 25'	41.5" x 112"	Rub-R-Cleat	
	A-1000964	21' & 25'	41.5" x 162"	Rub-R-Cleat	1-885474L
	A-1001410	21' & 25'	41.5" x 286"	Rub-R-Cleat	
	A-1001411	21' & 25'	41.5" x 307"	Rub-R-Cleat	
(210, 2100 ALL pull type)	A-1001409	21' RH	41.5" x 264"	Rub-R-Cleat	
(210, 2100 ALL pull type)	A-1001405	21' Extension	41.5" x 44"	Rub-R-Cleat	
(210, 2100 ALL pull type)	A-1001413	21' LH	41.5" x 394"	Rub-R-Cleat	
(250, 2500 ALL pull type)	A-1001412	25' RH	41.5" x 313"	Rub-R-Cleat	
(250, 2500 ALL pull type)	A-1001414	25' LH	41.5" x 446"	Rub-R-Cleat	

Case-IH					
MODELS	PART	CUT	SIZE	CLEAT TYPE	REPLACES
721 pull type	A-1001268	42' L.H. Front	41.5" x 129"	Rub-R-Cleat	1064358M91
721 pull type	A-1001290	30' R.H.	41.5" x 345"	Rub-R-Cleat	1063484M91
725 pull type	A-1000968	21' R.H.	41.5" x 271"	Rub-R-Cleat	1-899856L
725 pull type	A-1001280	25' LH	41.5" x 225"	Rub-R-Cleat	AW24943
730 pull type	A-1000968	21' R.H.	41.5" x 271"	Rub-R-Cleat	1-899856L
730 pull type	A-1001290	30' R.H.	41.5" x 345"	Rub-R-Cleat	1063484M91
736 pull type	A-1001434	36'	41.5" x 373"	Rub-R-Cleat	1069718M91
742 DUPLEX pull type	A-1001268	42' L.H. Front	41.5" x 129"	Rub-R-Cleat	1064358M91
742 DUPLEX pull type	A-1000969	25' R.H.	41.5" x 343"	Rub-R-Cleat	1-899532L
742 DUPLEX pull type	A-1001273	42' L.H. Rear	41.5" x 191"	Rub-R-Cleat	1064359M91
742 DUPLEX pull type	A-1001284	50' R.H. Rear	41.5" x 256"	Rub-R-Cleat	1063488M91
742 DUPLEX pull type	A-1001266	50' Ctr. Deck	41.5" x 122"	Rub-R-Cleat	1063486M91
750 pull type	A-1000969	25' R.H.	41.5" x 343"	Rub-R-Cleat	1-899532L
750 pull type	A-1001280	25' LH	41.5" x 225"	Rub-R-Cleat	AW24943
750 pull type	A-1001287	50' L.H. Rear	41.5" x 287"	Rub-R-Cleat	1063487M91
750 pull type	A-1001284	50' R.H. Rear	41.5" x 256"	Rub-R-Cleat	1063488M91
750 pull type	A-1001266	50' Ctr. Deck	41.5" x 122"	Rub-R-Cleat	1063486M91
750 pull type, w/ Ext Attachments	A-1001264	Long Draper	41.5" x 104.5"	Rub-R-Cleat	1063489M91
750 pull type, w/ Ext Attachments	A-1001261	Short Draper	41.5" x 70.5"	Rub-R-Cleat	1064525M91
8210 pull type, (<-1993)	A-1002944	21' LH	42" x 141.81"	Rub-R-Cleat, recessed	700710161
8210 pull type, (<-1993)	A-1002951	25' RH	42" x 276.5"	Rub-R-Cleat, recessed	700710162
8220 pull type, (<-1993)	A-1002947	25' LH	42" x 237.81"	Rub-R-Cleat, recessed	700710163
8220 pull type, (<-1993)	A-1002951	25' RH	42" x 276.5"	Rub-R-Cleat, recessed	700710162

Parts are not original equipment parts and are not sponsored, affiliated, or otherwise connected with any major brand.

Pull Type Swather Belting

Parts are not original equipment parts and are not sponsored, affiliated, or otherwise connected with any major brand.

Case-IH					
MODELS	PART	CUT	SIZE	CLEAT TYPE	REPLACES
8230 pull type, (<-1993)	A-1002948	30' LH	42" x 244.81"	Rub-R-Cleat, recessed	700710164
8230 pull type, (<-1993)	A-1002954	30' RH	42" x 369.68"	Rub-R-Cleat, recessed	700710165
8240 pull type, (<-1993)	A-1002952	35' LH	42" x 295.75"	Rub-R-Cleat, recessed	700710965
8240 pull type, (<-1993)	A-1002955	35' RH	42" x 433.81"	Rub-R-Cleat, recessed	700710966
8210 pull type, (1993->)	A-1002957	21' LH	42" x 140.63"	Rub-R-Cleat, full width	700712955
8210 pull type, (1993->)	A-1002964	25' RH	42" x 275.38"	Rub-R-Cleat, full width	700712956
8220 pull type, (1993->)	A-1002960	25' LH	42" x 236.62"	Rub-R-Cleat, full width	700712957
8220 pull type, (1993->)	A-1002964	25' RH	42" x 275.38"	Rub-R-Cleat, full width	700712956
8230 pull type, (1993->)	A-1002961	30' LH	42" x 243.62"	Rub-R-Cleat, full width	700712958
8230 pull type, (1993->)	A-1002967	30' RH	42" x 365.5"	Rub-R-Cleat, full width	700712959
8240 pull type, (1993->)	A-1002965	35' LH	42" x 293"	Rub-R-Cleat, full width	700712960
8240 pull type, (1993->)	A-1002968	35' RH	42" x 433.88"	Rub-R-Cleat, full width	700712961
200 pull type	A-1001274	12' Platform	41.5" x 193"	Rub-R-Cleat	597112R92
200 pull type	A-1001288	16' Platform	41.5" x 291"	Rub-R-Cleat	597113R92
200 pull type, (1994->)	A-1001283	Cross Conveyor	41.5" x 255"	Rub-R-Cleat	597115R91
200 pull type, (1994->)	A-1001259	Extension	41.5" x 39.25"	Rub-R-Cleat	597116R91
200 pull type, (1994->)	A-1001267	Rear Delivery	41.5" x 125"	Rub-R-Cleat	597114R91
75 pull type	A-1000955	3' Extension	41.5" x 78"	Rub-R-Cleat	K22921
75 pull type	A-1000957	18' L.H.	41.5" x 96"	Rub-R-Cleat	1-885273L
75 pull type	A-1000967	18' R.H.	41.5" x 241"	Rub-R-Cleat	1-885274L
75 pull type	A-1000961	21' L.H.	41.5" x 138"	Rub-R-Cleat	1-885230L
75 pull type	A-1000968	21' R.H.	41.5" x 271"	Rub-R-Cleat	1-899856L
75 pull type	A-1000964	21' & 25'	41.5" x 162"	Rub-R-Cleat	1-885474L
75 pull type	A-1000969	25' R.H.	41.5" x 343"	Rub-R-Cleat	1-899532L
CCIL					
MODELS	PART	CUT	SIZE	CLEAT TYPE	REPLACES
601 pull type	A-1001238	12'	41" x 200"	Rub-R-Cleat	13161
601 pull type	A-1001246	15'	41" x 272"	Rub-R-Cleat	01-3162 (01-3157)
601 pull type	A-1001249	18'	41" x 338"	Rub-R-Cleat	01-3163 (01-2762)
(622, 626 ALL pull type)	A-1001243	22' RH & LH	41" x 216.5"	Rub-R-Cleat	32638
(622, 626 ALL pull type)	A-1001245	26' RH & LH	41" x 267.5"	Rub-R-Cleat	32933
660 pull type	A-1001241	24' Short	41" x 210"	Rub-R-Cleat	01-3165 (01-3156)
660 pull type	A-1001244	24' Long	41" x 245.5"	Rub-R-Cleat	01-3192 (01-2615)
Cockshutt					
MODELS	PART	CUT	SIZE	CLEAT TYPE	REPLACES
(2, E2, 402 ALL pull type)	A-1001232	Ext. 3'	41" x 80"	Rub-R-Cleat	1949083
(2, E2, 402 ALL pull type)	A-1001239	12'	41" x 208"	Rub-R-Cleat	1949093
(2, E2, 402 ALL pull type)	A-1001247	15'	41" x 275"	Rub-R-Cleat	1949263
501 pull type	A-1000955	3' Extension	41.5" x 78'	Rub-R-Cleat	K22921
501 pull type	A-1000968	21' R.H.	41.5" x 271"	Rub-R-Cleat	1-899856L

Pull Type Swather Belting

Parts are not original equipment parts and are not sponsored, affiliated, or otherwise connected with any major brand.

Cockshutt

MODELS	PART	CUT	SIZE	CLEAT TYPE	REPLACES
501 pull type	A-1000957	18' L.H.	41.5" x 96"	Rub-R-Cleat	1-885273L
501 pull type	A-1000967	18' R.H.	41.5" x 241"	Rub-R-Cleat	1-885274L
501 pull type	A-1000961	21' L.H.	41.5" x 138"	Rub-R-Cleat	1-885230L
501 pull type	A-1000968	21' R.H.	41.5" x 271"	Rub-R-Cleat	1-899856L
501 pull type	A-1000964	21' & 25'	41.5" x 162"	Rub-R-Cleat	1-885474L
501 pull type	A-1000969	25' R.H.	41.5" x 343"	Rub-R-Cleat	1-899532L

Ford / New Holland

MODELS	PART	CUT	SIZE	CLEAT TYPE	REPLACES
109 pull type	A-1000955	3' Extension	41.5" x 78"	Rub-R-Cleat	K22921
109 pull type	A-1000968	15' & 21' R.H.	41.5" x 271"	Rub-R-Cleat	1-899856L
109 pull type	A-1000961	21' L.H.	41.5" x 138"	Rub-R-Cleat	1-885230L
109 pull type	A-1000957	18' L.H.	41.5" x 96"	Rub-R-Cleat	1-885273L
109 pull type	A-1000967	18' R.H.	41.5" x 241"	Rub-R-Cleat	1-885274L
109 pull type	A-1000964	21' & 25'	41.5" x 162"	Rub-R-Cleat	1-885474L
109 pull type	A-1000969	25' R.H.	41.5" x 343"	Rub-R-Cleat	1-899532L

Hesston

MODELS	PART	CUT	SIZE	CLEAT TYPE	REPLACES
1200 pull type, (<-1993)	A-1002944	21' LH	42" x 141.81"	Rub-R-Cleat, recessed	700710161
1200 pull type, (<-1993)	A-1002951	25' RH	42" x 276.5"	Rub-R-Cleat, recessed	700710162
1200 pull type, (<-1993)	A-1002947	25' LH	42" x 237.81"	Rub-R-Cleat, recessed	700710163
1200 pull type, (<-1993)	A-1002951	25' RH	42" x 276.5"	Rub-R-Cleat, recessed	700710162
1200 pull type, (<-1993)	A-1002948	30' LH	42" x 244.81"	Rub-R-Cleat, recessed	700710164
1200 pull type, (<-1993)	A-1002954	30' RH	42" x 369.68"	Rub-R-Cleat, recessed	700710165
1200 pull type, (<-1993)	A-1002952	35' LH	42" x 295.75"	Rub-R-Cleat, recessed	700710965
1200 pull type, (<-1993)	A-1002955	35' RH	42" x 433.81"	Rub-R-Cleat, recessed	700710966
1200 pull type, (1993->)	A-1002957	21' LH	42" x 140.63"	Rub-R-Cleat, full width	700712955
1200 pull type, (1993->)	A-1002964	25' RH	42" x 275.38"	Rub-R-Cleat, full width	700712956
1200 pull type, (1993->)	A-1002960	25' LH	42" x 236.62"	Rub-R-Cleat, full width	700712957
1200 pull type, (1993->)	A-1002964	25' RH	42" x 275.38"	Rub-R-Cleat, full width	700712956
1200 pull type, (1993->)	A-1002961	30' LH	42" x 243.62"	Rub-R-Cleat, full width	700712958
1200 pull type, (1993->)	A-1002967	30' RH	42" x 365.5"	Rub-R-Cleat, full width	700712959
1200 pull type, (1993->)	A-1002965	35' LH	42" x 293"	Rub-R-Cleat, full width	700712960
1200 pull type, (1993->)	A-1002968	35' RH	42" x 433.88"	Rub-R-Cleat, full width	700712961

John Deere

MODELS	PART	CUT	SIZE	CLEAT TYPE	REPLACES
190 pull type	A-1000972	Platform	42" x 80"	Rub-R-Cleat	AW11644W
190 pull type	A-1001325	Platform	42" x 248"	Rub-R-Cleat	70998
190 pull type	A-1001328	Double Swath	42" x 266"	Rub-R-Cleat	AW11645W
190 pull type	A-1001297	Double Swath Ext	42" x 74"	Rub-R-Cleat	AW11646W
190 pull type	A-1001306	Double Swath Ext	42" x 112"	Rub-R-Cleat	AW11647W
290 pull type	A-1001311	Platform	42" x 143"	Rub-R-Cleat	AW13867

Pull Type Swather Belting

Parts are not original equipment parts and are not sponsored, affiliated, or otherwise connected with any major brand.

John Deere					
MODELS	PART	CUT	SIZE	CLEAT TYPE	REPLACES
290 pull type	A-1001325	Platform	42" x 248"	Rub-R-Cleat	70998
580 pull type	A-1000955	3' Extension	41.5" x 78"	Rub-R-Cleat	K22921
580 pull type	A-1000957	18' L.H.	41.5" x 96"	Rub-R-Cleat	1-885273L
580 pull type	A-1000967	18' R.H.	41.5" x 241"	Rub-R-Cleat	1-885274L
580 pull type	A-1000961	21' L.H.	41.5" x 138"	Rub-R-Cleat	1-885230L
580 pull type	A-1000968	21' R.H.	41.5" x 271"	Rub-R-Cleat	1-899856L
580 pull type	A-1000964	21' & 25'	41.5" x 162"	Rub-R-Cleat	1-885474L
580 pull type	A-1000969	25' R.H.	41.5" x 343"	Rub-R-Cleat	1-899532L
580 pull type	A-1000968	21' R.H.	41.5" x 271"	Rub-R-Cleat	1-899856L
580 pull type	A-1001290	30' R.H.	41.5" x 345"	Rub-R-Cleat	1063484M91
590 pull type	A-1000968	21' R.H.	41.5" x 271"	Rub-R-Cleat	1-899856L
590 pull type	A-1001268	42' L.H. Front	41.5" x 129"	Rub-R-Cleat	1064358M91
590 pull type	A-1000968	21' R.H.	41.5" x 271"	Rub-R-Cleat	1-899856L
590 pull type	A-1001280	25' LH	41.5" x 225"	Rub-R-Cleat	AW24943
590 pull type	A-1000968	21' R.H.	41.5" x 271"	Rub-R-Cleat	1-899856L
590 pull type	A-1001290	30' R.H.	41.5" x 345"	Rub-R-Cleat	1063484M91
590 pull type	A-1001434	36'	41.5" x 373"	Rub-R-Cleat	1069718M91
Massey Ferguson					
MODELS	PART	CUT	SIZE	CLEAT TYPE	REPLACES
30 pull type	A-1001276	12'	41.38" x 210"	Rub-R-Cleat	141993M92
30 pull type	A-1001289	16'	41.38" x 306"	Rub-R-Cleat	141992M92
35 pull type	A-1000955	3' Extension	41.5" x 78"	Rub-R-Cleat	K22921
35 pull type	A-1000968	21' R.H.	41.5" x 271"	Rub-R-Cleat	1-899856L
35 pull type	A-1000957	18' L.H.	41.5" x 96"	Rub-R-Cleat	1-885273L
35 pull type	A-1000967	18' R.H.	41.5" x 241"	Rub-R-Cleat	1-885274L
35 pull type	A-1000961	21' L.H.	41.5" x 138"	Rub-R-Cleat	1-885230L
35 pull type	A-1000968	21' R.H.	41.5" x 271"	Rub-R-Cleat	1-899856L
35 pull type	A-1000964	21' & 25'	41.5" x 162"	Rub-R-Cleat	1-885474L
35 pull type	A-1000969	25' R.H.	41.5" x 343"	Rub-R-Cleat	1-899532L
(613, 625 DUPLEX ALL pull type)	A-1000968	21' R.H.	41.5" x 271"	Rub-R-Cleat	1-899856L
(613, 625 DUPLEX ALL pull type)	A-1001290	30' R.H.	41.5" x 345"	Rub-R-Cleat	1063484M91
(613, 625 DUPLEX ALL pull type)	A-1001434	36'	41.5" x 373"	Rub-R-Cleat	1069718M91
(613, 625 DUPLEX ALL pull type)	A-1000968	21' R.H.	41.5" x 271"	Rub-R-Cleat	1-899856L
(613, 625 DUPLEX ALL pull type)	A-1001268	42' L.H. Front	41.5" x 129"	Rub-R-Cleat	1064358M91
(613, 625 DUPLEX ALL pull type)	A-1001284	50' R.H. Rear	41.5" x 256"	Rub-R-Cleat	1063488M91
(613, 625 DUPLEX ALL pull type)	A-1001273	42' L.H. Rear	41.5" x 191"	Rub-R-Cleat	1064359M91
(613, 625 DUPLEX ALL pull type)	A-1001264	Long Draper	41.5" x 104.5"	Rub-R-Cleat	1063489M91
(613, 625 DUPLEX ALL pull type)	A-1001261	Short Draper	41.5" x 70.5"	Rub-R-Cleat	1064525M91
(613, 625 DUPLEX ALL pull type)	A-1000968	21' R.H.	41.5" x 271"	Rub-R-Cleat	1-899856L
(613, 625 DUPLEX ALL pull type)	A-1001279	50' L.H. Front	41.5" x 224"	Rub-R-Cleat	1063485M91

Pull Type Swather Belting

Massey Ferguson

MODELS	PART	CUT	SIZE	CLEAT TYPE	REPLACES
(613, 625 DUPLEX ALL pull type)	A-1001284	50' R.H. Rear	41.5" x 256"	Rub-R-Cleat	1063488M91
(613, 625 DUPLEX ALL pull type)	A-1001287	50' L.H. Rear	41.5" x 287"	Rub-R-Cleat	1063487M91
(613, 625 DUPLEX ALL pull type)	A-1001266	50' Ctr. Deck	41.5" x 122"	Rub-R-Cleat	1063486M91

Massey Harris

MODELS	PART	CUT	SIZE	CLEAT TYPE	REPLACES
4 pull type	A-1001317	10' Platform	42.25" x 191"	Rub-R-Cleat	GE5059
4 pull type	A-1001320	12' Platform	42.25" x 217"	Rub-R-Cleat	GE5078.5
4 pull type	A-1001332	16' Platform	42.25" x 304"	Rub-R-Cleat	GE5081.5
8 pull type	A-1002715	12'	41.38" x 236"	Rub-R-Cleat	
28 pull type	A-1002710	16'	41" x 308"	Rub-R-Cleat	Rub-R-Cleat or Wood

Owattona

MODELS	PART	CUT	SIZE	CLEAT TYPE	REPLACES
245 pull type	A-1001302	Ext. 3'	41.88" x 94"	Rub-R-Cleat	070-18673
245 pull type	A-1001298	18' Short	41.88" x 78.88"	Rub-R-Cleat	070-18673
245 pull type	A-1001326	18' & 21.5' L.H.	41.88" x 249.63"	Rub-R-Cleat	070-18674
245 pull type	A-1001313	21.5' Short	41.88" x 162.88"	Rub-R-Cleat	070-18675

Renn

MODELS	PART	CUT	SIZE	CLEAT TYPE	REPLACES
1000 pull type	A-1000955	3' Extension	41.5" x 78"	Rub-R-Cleat	K22921
1000 pull type	A-1000968	21' R.H.	41.5" x 271"	Rub-R-Cleat	1-899856L
1000 pull type	A-1000957	18' L.H.	41.5" x 96"	Rub-R-Cleat	1-885273L
1000 pull type	A-1000967	18' R.H.	41.5" x 241"	Rub-R-Cleat	1-885274L
1000 pull type	A-1000961	21' L.H.	41.5" x 138"	Rub-R-Cleat	1-885230L
1000 pull type	A-1000968	21' R.H.	41.5" x 271"	Rub-R-Cleat	1-899856L
1000 pull type	A-1000964	21' & 25'	41.5" x 162"	Rub-R-Cleat	1-885474L
1000 pull type	A-1000969	25' R.H.	41.5" x 343"	Rub-R-Cleat	1-899532L

Versatile

MODELS	PART	CUT	SIZE	CLEAT TYPE	REPLACES
M10 pull type	A-1001319	12' End Delivery	42" x 203"	Rub-R-Cleat	SW3170
M10 pull type	A-1001329	15' End Delivery	42" x 273"	Rub-R-Cleat	SW3171
M10 pull type	A-1000976	18' Ctr. Del. L.H.	42" x 124"	Rub-R-Cleat	SW3359
M10 pull type	A-1000985	18' Ctr. Del. R.H.	42" x 213"	Rub-R-Cleat	SW3360
M10 pull type	A-1001335	18' End Delivery	42" x 347"	Rub-R-Cleat	SW3224
M10 pull type	A-1000979	20' Ctr. Del. LH	42" x 150"	Rub-R-Cleat	67790
M10 pull type	A-1001322	24' Right or Left	42" x 237"	Rub-R-Cleat	SW3303
M10 pull type	A-1001322	24' Right or Left	42" x 237"	Rub-R-Cleat	SW3303
4300 pull type, w/ 4000 Series Table (25' - 30')	A-1001357	Endless Belt	42" x 161.75"	Rub-R-Cleat	93301
4300 pull type, w/ 4000 Series Table (25' - 30')	A-1000401	Endless Belt	42" x 11.75"	Rub-R-Cleat	93292
4300 pull type, w/ 4000 Series Table (25' - 30')	A-1000402	Endless Belt	42" x 116.75"	Rub-R-Cleat	93298
4300 pull type, w/ 4000 Series Table (25' - 30')	A-1000403	Endless Belt	42" x 146.75"	Rub-R-Cleat	93300

Parts are not original equipment parts and are not sponsored, affiliated, or otherwise connected with any major brand.

Pull Type Swather Belting

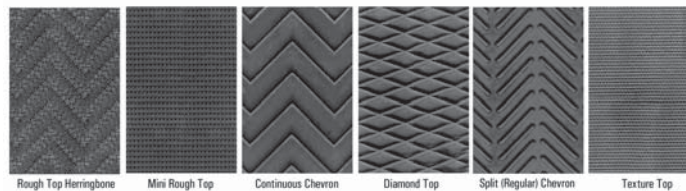
Versatile

MODELS	PART	CUT	SIZE	CLEAT TYPE	REPLACES
4300 pull type, w/ 4000 Series Table (25' - 30')	A-1000404	Endless Belt	42" x 101.75"	Rub-R-Cleat	93297
4300 pull type, w/ 4000 Series Table (25' - 30')	A-1000405	Endless Belt	42" x 56.75"	Rub-R-Cleat	93294
4300 pull type, w/ 4000 Series Table (25' - 30')	A-1000875	Endless Belt	42" x 41.75"	Rub-R-Cleat	93293
4300 pull type, w/ 4000 Series Table (25' - 30')	A-1001251	Endless Belt	42" x 131.75"	Rub-R-Cleat	93299
4300 pull type, w/ 4000 Series Table (25' - 30')	A-1001294	Endless Belt	42" x 176.75"	Rub-R-Cleat	93302
4300 pull type, w/ 4000 Series Table (25' - 30')	A-1001847	Endless Belt	42" x 71.75"	Rub-R-Cleat	93295
4300 pull type	A-1001868	Endless Belt	42" x 86.75"	Rub-R-Cleat	93296

White/ Oliver/ Mpl Moline

MODELS	PART	CUT	SIZE	CLEAT TYPE	REPLACES
501 pull type	A-1000970	18'	41.5" x 346"	Rub-R-Cleat	
601 pull type	A-1000955	3' Extension	41.5" x 78"	Rub-R-Cleat	K22921
601 pull type	A-1000968	21' R.H.	41.5" x 271"	Rub-R-Cleat	1-899856L
601 pull type	A-1000957	18' L.H.	41.5" x 96"	Rub-R-Cleat	1-885273L
601 pull type	A-1000967	18' R.H.	41.5" x 241"	Rub-R-Cleat	1-885274L
601 pull type	A-1000961	21' L.H.	41.5" x 138"	Rub-R-Cleat	1-885230L
601 pull type	A-1000968	21' R.H.	41.5" x 271"	Rub-R-Cleat	1-899856L
601 pull type	A-1000964	21' & 25'	41.5" x 162"	Rub-R-Cleat	1-885474L
601 pull type	A-1000969	25' R.H.	41.5" x 343"	Rub-R-Cleat	1-899532L
(M144, M168 ALL pull type)	A-1002709	12'	41" x 202"	Rub-R-Cleat	15A 3350
(M144, M168 ALL pull type)	A-1002707	14'	41" x 250"	Rub-R-Cleat	15A 449

Round Baler Belting



Agco

MODELS	PART	DESCRIPTION	SIZE (INCH)	PLY/TEXTURE	# BELTS	REPLACES
5134	A-1001772	Upper Belting	4.8 X 365	2Ply Texture Top w/ Clipper fastener	5	700-700-802
5134	A-1000357	Upper Belting	4.8 X 365	3Ply Mini Rough Top w/ Clipper fastener	5	700-700-802
ROTO-BALER	A-1000573	Upper belting	5.5 X 72	2Ply Texture Top w/ Clipper fastener	6	
ROTO-BALER	A-1000574	Lower belting	5.5 X 102	2Ply Texture Top w/ Clipper fastener	6	

Case-IH

MODELS	PART	DESCRIPTION	SIZE (INCH)	PLY/TEXTURE	# BELTS	REPLACES
241, 2400	A-1000557	Upper belting	4 X 431	2Ply Texture Top w/ Clipper fastener	9	208510C92
241, 2400	A-1000669	Upper belting	4 X 431	3Ply Texture Top w/ Clipper fastener	9	208510C92
241, 2400	A-1000588	Upper belting	10 X 431	2Ply Texture Top w/ Clipper fastener		
241, 2400	A-1000612	Upper belting	10 X 431	3Ply Texture Top w/ Clipper fastener		
241, 2400	A-1000660	Lower belting	60 X 120	2Ply Texture Top w/ Clipper fastener	1	210480C92
2400 w/ Dual Springs	A-1001776	Upper belting	4 X 424	2Ply Texture Top w/ Clipper fastener	9	

Parts are not original equipment parts and are not sponsored, affiliated, or otherwise connected with any major brand.

Round Baler Belting

Parts are not original equipment parts and are not sponsored, affiliated, or otherwise connected with any major brand.

Case-IH						
MODELS	PART	DESCRIPTION	SIZE (INCH)	PLY/TEXTURE	# BELTS	REPLACES
2400 w/ Dual Springs	A-1001777	Upper belting	4 X 424	3Ply Texture Top w/ Clipper fastener	9	
2400 w/ Dual Springs	A-1001778	Upper belting	10 X 424	2Ply Texture Top w/ Clipper fastener		
2400 w/ Dual Springs	A-1001779	Upper belting	10 X 424	3Ply Texture Top w/ Clipper fastener		
3440	A-1000397	Upper belting	11 X 73.25	2Ply Texture Top w/ Clipper fastener	12	105003
3440	A-1000398	Upper belting	11 X 73.25	3Ply Texture Top w/ Clipper fastener	12	105003
3440	A-1000399	Lower belting	11 X 103.5	2Ply Texture Top w/ Clipper fastener	4	
3440	A-1000400	Lower belting	11 X 103.5	3Ply Texture Top w/ Clipper fastener	4	
3450 Early	A-1000569	Upper belting	4.75 X 73.25	2Ply Texture Top w/ Clipper fastener	30	29-628A1701.25.01.07 & 104412
3450 Early	A-1000685	Upper belting	4.75 X 73.25	3Ply Texture Top w/ Clipper fastener	30	29-628A1701.25.01.07 & 104412
3450 Newer	A-1000397	Upper belting	11 X 73.25	2Ply Texture Top w/ Clipper fastener	15	105003
3450 Newer	A-1000398	Upper belting	11 X 73.25	3Ply Texture Top w/ Clipper fastener	15	105003
3450 All	A-1000399	Lower belting	11 X 103.5	2Ply Texture Top w/ Clipper fastener	5	
3450 All	A-1000400	Lower belting	11 X 103.5	3Ply Texture Top w/ Clipper fastener	5	
3640	A-1000397	Upper belting	11 X 73.25	2Ply Texture Top w/ Clipper fastener	20	
3640	A-1000398	Upper belting	11 X 73.25	3Ply Texture Top w/ Clipper fastener	20	
3640	A-1000599	Lower belting	11 X 121.25	2Ply Texture Top w/ Clipper fastener	4	
3640	A-1000623	Lower belting	11 X 121.25	3Ply Texture Top w/ Clipper fastener	4	
3650 Early	A-1000569	Upper belting	4.75 X 73.25	2Ply Texture Top w/ Clipper fastener	55	29-628A1701.25.01.07 & 104412
3650 Early	A-1000685	Upper belting	4.75 X 73.25	3Ply Texture Top w/ Clipper fastener	55	29-628A1701.25.01.07 & 104412
3650 Newer	A-1000397	Upper belting	11 X 73.25	2Ply Texture Top w/ Clipper fastener	25	105003
3650 Newer	A-1000398	Upper belting	11 X 73.25	3Ply Texture Top w/ Clipper fastener	25	105003
3650 All	A-1000599	Lower belting	11 X 121.25	2Ply Texture Top w/ Clipper fastener	5	29-626A1701.25.01.01 & 104411
3650 All	A-1000623	Lower belting	11 X 121.25	3Ply Texture Top w/ Clipper fastener	5	29-626A1701.25.01.01 & 104411
3650	A-1003970	Lower Belting	11 x 121	2Ply Mini Rough Top ENDLESS	5	700709542 w/ 3 Cleaner Cleats
3650	A-1003972	Optional Upper belting	11 x 73.25	2Ply Mini Rough Top ENDLESS	25	
8420	A-1001772	Upper belting	4.8 X 365	2Ply Texture Top w/ Clipper fastener	5	700-700-802
8420	A-1000357	Upper belting	4.8 X 365	3Ply Mini Rough Top w/ Clipper fastener	5	700-700-802
8430	A-1002467	Upper belting	7 X 366	2Ply Texture Top w/ Clipper fastener	6	700-709-185
8430	A-1002860	Upper belting	7 X 366	3Ply Chevron w/ Clipper fastener	6	700-709-185
8430 Optional	A-1003209	Upper belting	7 X 366	3Ply Chevron w/ Titan fastener	6	
8430 Optional	A-1002727	Upper belting	7 X 366	3Ply Mini Rough w/ Clipper fastener	6	
8435	A-1003213	Upper belting	7 X 471.5	2Ply Texture Top w/ Clipper fastener	6	700-714-815
8435	A-1003214	Upper belting	7 X 471.5	3Ply Chevron w/ Clipper fastener	6	700-714-815
8435	A-1003210	Upper belting	7 X 471.5	3Ply Chevron w/ Titan fastener	6	
8435	A-1003967	Upper belting	7 X 471.5	3Ply Chevron ENDLESS	6	700714815

Round Baler Belting

Case-IH						
MODELS	PART	DESCRIPTION	SIZE (INCH)	PLY/TEXTURE	# BELTS	REPLACES
8440	A-1000561	Upper belting	4 X 452	2Ply Texture Top w/ Clipper fastener	9	828178
8440	A-1002854	Upper belting	4 X 452	3Ply Chevron w/ Clipper fastener	9	828178
8440 Optional	A-1000355	Upper belting	4 X 452	3Ply Rough Herring Bone w/ Clipper fastener	9	
8450	A-1002455	Upper belting	6.5 X 572.5	2Ply Texture Top w/ Clipper fastener	2	700-708-740
8450	A-1002859	Upper belting	6.5 X 572.5	3Ply Chevron w/ Clipper fastener	2	700-708-740
8450	A-1002457	Upper belting	7 X 570	2Ply Texture Top w/ Clipper fastener	4	700-707-162
8450	A-1002862	Upper belting	7 X 570	3Ply Chevron w/ Clipper fastener	4	700-707-162
8450	A-1003208	Upper belting	6.5 X 572.5	3Ply Chevron w/ Titan fastener	2	
8450	A-1003212	Optional Upper Belting	7 X 570	3Ply Chevron w/ Titan fastener	4	700-713-630
8450	A-1007087	Optional Upper belting	7 x 570	3Ply Continuous Chevron, Alligator Rivet & Pin		
8450 Optional	A-1002456	Upper belting	6.5 X 572.5	3Ply Rough Herring Bone w/ Clipper fastener	2	
8450 Optional	A-1002458	Upper belting	7 X 570	3Ply Rough Herring Bone w/ Clipper fastener	4	
8455	A-1002865	Upper belting	7 X 562.5	2Ply Texture Top w/ Clipper fastener	6	700-709-999
8455	A-1002861	Upper belting	7 X 562.5	3Ply Chevron w/ Clipper fastener	6	700-709-999
8455	A-1003211	Optional Upper Belting	7 X 562.5	3Ply Chevron w/ Titan fastener	6	700-713-617
8455 Optional	A-1002867	Upper belting	7 X 562.5	3Ply Rough Herringbone w/ Clipper fastener	6	
8460	A-1002455	Early / upper belting	6.5 X 572.5	2Ply Texture Top w/ Clipper fastener	2	700-708-740
8460	A-1002859	Early / upper belting	6.5 X 572.5	3Ply Chevron w/ Clipper fastener	2	700-708-740
8460	A-1002457	Early / upper belting	7 X 570	2Ply Texture Top w/ Clipper fastener	6	700-707-162
8460	A-1002862	Early / upper belting	7 X 570	3Ply Chevron w/ Clipper fastener	6	700-707-162
8460	A-1007087	Optional Upper belting	7 x 570	3Ply Continuous Chevron, Alligator Rivet & Pin		
8460	A-1004105	Upper belting	7 X 562.5	3Ply Chevron w/ AR	6	
8460 Earlier	A-1003208	Upper belting	6.5 X 572.5	3Ply Chevron w/ Titan fastener	2	
8460 Earlier	A-1003212	Optional Upper Belting	7 X 570	3Ply Chevron w/ Titan fastener	6	700-713-630
8460 Optional	A-1002456	Early / upper belting	6.5 X 572.5	3Ply Rough Herring Bone w/ Clipper fastener	2	
8460 Optional	A-1002458	Early / upper belting	7 X 570	3Ply Rough Herring Bone w/ Clipper fastener	6	
8460 Newer	A-1002861	Upper belting	7 X 562.5	3Ply Chevron w/ Clipper fastener	8	700-709-999
8460 Newer	A-1003211	Optional Upper Belting	7 X 562.5	3Ply Chevron w/ Titan fastener	8	700-713-617
8460 Newer	A-1002865	Upper belting	7 X 562.5	2Ply Texture Top w/ Clipper fastener	8	700-709-999
8460 Optional	A-1002867	Newer / Upper belting	7 X 562.5	3Ply Rough Herringbone w/ Clipper fastener	8	
8465	A-1002865	Upper belting	7 X 562.5	2Ply Texture Top w/ Clipper fastener	8	700-709-999
8465	A-1002861	Upper belting	7 X 562.5	3Ply Chevron w/ Clipper fastener	8	700-709-999
8465 Optional	A-1003211	Optional Upper Belting	7 X 562.5	3Ply Chevron w/ Titan fastener	8	700-713-617

Parts are not original equipment parts and are not sponsored, affiliated, or otherwise connected with any major brand.

Round Baler Belting

Parts are not original equipment parts and are not sponsored, affiliated, or otherwise connected with any major brand.

Case-IH						
MODELS	PART	DESCRIPTION	SIZE (INCH)	PLY/TEXTURE	# BELTS	REPLACES
8465 Optional	A-1002867	Upper belting	7 X 562.5	3Ply Rough Herringbone w/ Clipper fastener	8	
8480	A-1000397	Upper belting	11 X 73.25	2Ply Texture Top w/ Clipper fastener	25	105003
8480	A-1000398	Upper belting	11 X 73.25	3Ply Texture Top w/ Clipper fastener	25	105003
8480 Optional w/ 3 Cleaner Cleats	A-1003970	Upper belting	11 x 121	2Ply Mini Rough Top ENDLESS	25	700709542 w/ 3 Cleaner Cleats
8480	A-1003972	Upper belting	11 x 73.25	2Ply Mini Rough Top ENDLESS	25	700709544 w/ 1 Cleaner Cleat
8480	A-1000599	Lower belting	11 X 121.25	2Ply Texture Top w/ Clipper fastener	5	29-626A1701.25.01.01 & 104411
8480	A-1000623	Lower belting	11 X 121.25	3Ply Texture Top w/ Clipper fastener	5	29-626A1701.25.01.01 & 104411
RBX441, RBX442 x6	A-1003784	Upper belting	7 X 272.5	3Ply Chevron w/ Titan fastener	6	
RBX441 Optional	A-1003785	Upper belting	7 X 272.5	3Ply Chevron w/ Clipper fastener	6	
RBX451	A-1003976	Upper belting	7 x 343	3Ply Chevron ENDLESS	6	87013938 & 86616068
RBX451 Optional	A-1003787	Upper belting	7 X 343	3Ply Chevron w/ Clipper fastener	6	
RBX451 Silage Special	A-1003976	Upper belting	7 x 343	3Ply Chevron ENDLESS	6	87013938 & 86616068
RBX461	A-1003788	Upper belting	7 X 420.5	3Ply Chevron w/ Titan fastener	6	
RBX461	A-1003977	Upper belting	7 x 420.5	3Ply Chevron ENDLESS	6	87013939 & 86616069
RBX461 Optional	A-1003789	Upper belting	7 X 420.5	3Ply Chevron w/ Clipper fastener	6	
RBX561	A-1003788	Upper belting	7 X 420.5	3Ply Chevron w/ Titan fastener	8	
RBX561	A-1003977	Upper belting	7 x 420.5	3Ply Chevron ENDLESS	6	87013939 & 86616069
RBX561 Optional	A-1003789	Upper belting	7 X 420.5	3Ply Chevron w/ Clipper fastener	8	
RS451	A-1003638	Upper belting	7 X 475	3Ply Chevron w/ Titan fastener	6	
RS451	A-1003969	Upper belting	7 x 475	3Ply Chevron ENDLESS	8	700-716-049
RS451 Optional	A-1003335	Upper belting	7 X 475	3Ply Chevron w/ Clipper fastener	6	700-716-049
RS451 Optional	A-1003670	Upper belting	7 X 475	3Ply .315 MRT w/ Titan fastener	6	
RS451	A-1005803	Upper belting	7 x 475	3Ply .315 MRT w/ Alligator lacing		
RS551	A-1003638	Upper belting	7 X 475	3Ply Chevron w/ Titan fastener	8	
RS551	A-1003969	Upper belting	7 x 475	3Ply Chevron ENDLESS	8	700-716-049
RS551 Optional	A-1003335	Upper belting	7 X 475	3Ply Chevron w/ Clipper fastener	8	700-716-049
RS551 Optional	A-1003670	Upper belting	7 X 475	3Ply .315 MRT w/ Titan fastener	8	
RS561	A-1003621	Upper Belting	7 X 547	3Ply Chevron w/ Titan fastener	8	
RS561	A-1003965	Upper belting	7 x 547	3Ply Mini Rough Top ENDLESS	8	700728092
RS561	A-1003968	Upper belting	7 x 547	3Ply Chevron Endless	8	700717717
RS561	A-1005567	Upper belting	7 547	3Ply Continuous Chevron Alligator Rivet		
RS561	A-1005804	Upper belting	7 x 547	3Ply .315 MRT w/ Alligator lacing		
RS561 Optional	A-1003620	Upper belting	7 X 547	3Ply Chevron w/ Clipper fastener	8	
Challenger						
MODELS	PART	DESCRIPTION	SIZE (INCH)	PLY/TEXTURE	# BELTS	REPLACES
RB34	A-1000357	Upper Belting	4.8 X 365	3Ply Mini Rough Top w/ Clipper fastener	5	700-700-802
RB34	A-1005805	Upper Belting	4.8 X 364	3Ply MRT w/ AR	5	

Round Baler Belting

Parts are not original equipment parts and are not sponsored, affiliated, or otherwise connected with any major brand.

Challenger						
MODELS	PART	DESCRIPTION	SIZE (INCH)	PLY/TEXTURE	# BELTS	REPLACES
RB44	A-1002727	Upper Belting	7 X 366	3Ply Mini Rough w/ Clipper fastener	6	
RB44	A-700716010	Baler Starter Flaps	3.5 X 43.31	3Ply MRT		
RB45	A-1005803	Upper Belting	7 x 475	3Ply .315 MRT w/ Alligator lacing	6	
RB45	A-700716010	Baler Starter Flaps	3.5 X 43.31	3Ply MRT		
RB46	A-1005804	Upper Belting	7 x 547	3Ply .315 MRT w/ Alligator lacing		
RB46	A-1005800	Upper Belting	7 x 547	3Ply Diamond Top w/ Alligator lacing		
RB46	A-1003886	Upper Belting	7 X 547	3Ply Mini-Rough w/ Alligator Rivet	8	700728088
RB46	A-700716010	Baler Starter Flaps	3.5 X 43.31	3Ply MRT		
RB463	A-1005804	Upper Belting	7 x 547	3Ply .315 MRT w/ Alligator lacing	6	
RB463	A-1005800	Upper Belting	7 x 547	3Ply Diamond Top w/ Alligator lacing		
RB463	A-1003886	Upper Belting	7 X 547	3Ply Mini-Rough w/ Alligator Rivet	8	700728088
RB56	A-1005804	Upper Belting	7 x 547	3Ply .315 MRT w/ Alligator lacing		
RB56	A-1005800	Upper Belting	7 x 547	3Ply Diamond Top w/ Alligator lacing		
RB56	A-1003886	Upper Belting	7 X 547	3Ply Mini-Rough w/ Alligator Rivet	8	700728088
RB56	A-700717714	Baler Starter Flap	3.5 X 58.5	3Ply MRT		
RB563	A-1005804	Upper Belting	7 x 547	3Ply .315 MRT w/ Alligator lacing	8	
RB563	A-1005800	Upper Belting	7 x 547	3Ply Diamond Top w/ Alligator lacing		
RB563	A-1003886	Upper Belting	7 X 547	3Ply Mini-Rough w/ Alligator Rivet	8	700728088

Claas						
MODELS	PART	DESCRIPTION	SIZE (INCH)	PLY/TEXTURE	# BELTS	REPLACES
ROLLANT 180	A-1003668	Upper belting	8.66 X 500	3Ply Mini Rough Top w/ Heavy Plate	5	
VARIANT 180	A-1003668	Upper belting	8.66 X 500	3Ply Mini Rough Top w/ Heavy Plate	5	
260	A-1005801	Baler Belt, Upper	8.46 X 444	3Ply MRT w/ HP	5	
260 RC VARIANT	A-1005801	Baler Belt, Upper	8.46 X 444	3Ply MRT w/ HP	5	
280	A-1003668	Upper belting	8.66 X 500	3Ply Mini Rough Top w/ Heavy Plate	5	
280 RC VARIANT	A-1003668	Upper belting	8.66 X 500	3Ply Mini Rough Top w/ Heavy Plate	5	

Ford / New Holland						
MODELS	PART	DESCRIPTION	SIZE (INCH)	PLY/TEXTURE	# BELTS	REPLACES
551	A-1000575	Upper belting	6 X 450	2Ply Texture Top w/ Clipper fastener	2	68254
551	A-1000688	Upper Belting	6 X 450	3Ply Texture Top w/ Clipper fastener	2	68254
551	A-1000571	Upper belting	5 X 450	2Ply Texture Top w/ Clipper fastener	3	66548
551	A-1000686	Upper belting	5 X 450	3Ply Texture Top w/ Clipper fastener	3	66548
551	A-1000652	Lower / V-Guide belting	44.25 X 69.5	2Ply Texture Top w/ Clipper fastener	1	66556
551 Newer	A-1000651	Lower / V-Guide belting	44.25 X 56.5	2Ply Texture Top w/ Clipper fastener	1	69784
552	A-1000577	Upper belting	6 X 466	2Ply Texture Top w/ Clipper fastener	6	59800
552	A-1000690	Upper belting	6 X 466	3Ply Texture Top w/ Clipper fastener	6	59800
552	A-1000657	Lower / V-Guide belting	60 X 96	2Ply Texture Top w/ Clipper fastener	1	56480
630, 634	A-1002459	Upper belting	7 X 272.5	2Ply Texture Top w/ Clipper fastener	6	
630, 634	A-1002460	Upper belting	7 X 272.5	3Ply Mini Rough Top w/ Clipper fastener	6	
638	A-1002459	Upper belting	7 X 272.5	2Ply Texture Top w/ Clipper fastener	6	

Round Baler Belting

Parts are not original equipment parts and are not sponsored, affiliated, or otherwise connected with any major brand.

Ford / New Holland						
MODELS	PART	DESCRIPTION	SIZE (INCH)	PLY/TEXTURE	# BELTS	REPLACES
638	A-1002460	Upper belting	7 X 272.5	3Ply Mini Rough Top w/ Clipper fastener	6	
640	A-1002864	Upper belting	7 X 343	2Ply Texture Top w/ Clipper fastener	6	9843314
640	A-1002866	Upper belting	7 X 343	3Ply Mini Rough Top w/ Clipper fastener	6	9843314
644 Silage Special	A-1002864	Upper belting	7 X 343	2Ply Texture Top w/ Clipper fastener	6	9843314
644 Silage Special	A-1002866	Upper belting	7 X 343	3Ply Mini Rough Top w/ Clipper fastener	6	9843314
644 Silage Special	A-1003974	Upper belting	7 x 343	3Ply Mini Rough Top Endless	6	
644 Silage Special	A-9822083-E	Upper Belting; Economy	7 X 343	3Ply Mini Rough Top Endless	6	
648 Silage Special	A-1002864	Upper belting	7 X 343	2Ply Texture Top w/ Clipper fastener	6	9843314
648 Silage Special	A-1002866	Upper belting	7 X 343	3Ply Mini Rough Top w/ Clipper fastener	6	9843314
648 Silage Special	A-1003974	Upper belting	7 x 343	3Ply Mini Rough Top Endless	6	
648 Silage Special	A-9822083-E	Upper Belting; Economy	7 X 343	3Ply Mini Rough Top Endless	6	
648 all versions	A-1002980	Upper belting	7 X 343	3Ply .315" Mini Rough w/ Clipper fastener	6	
648 all versions	A-1006482	Upper belting	7 X 343	3Ply .315" Mini Rough w/ Alligator	6	
650, 654	A-1002461	Upper belting	7 X 420.5	2Ply Texture Top w/ Clipper fastener	6	
650, 654	A-1002462	Upper belting	7 X 420.5	3Ply Mini Rough Top w/ Clipper fastener	6	
650, 654	A-1002981	Upper belting	7 X 420.5	3Ply .315" Thick Mini Rough w/ Clipper fastener	6	
650, 654	A-1003770	Upper belting	7 X 420.5	3Ply .315" Mini Rough w/ Alligator	8	
(650, 654 ALL Optional)	A-1004027	Upper belting	7 x 420.5	3Ply Mini Rough Top w/ Heavy Plate		
658 all versions	A-1002461	Upper belting	7 X 420.5	2Ply Texture Top w/ Clipper fastener	6	
658 all versions	A-1002462	Upper belting	7 X 420.5	3Ply Mini Rough Top w/ Clipper fastener	6	
658	A-1003975	Upper belting	7 x 420.5	3Ply Mini Rough Top ENDLESS	8	9828294
658 all versions	A-1002981	Upper belting	7 X 420.5	3Ply .315" Thick Mini Rough w/ Clipper fastener	6	
658 all versions	A-1003770	Upper belting	7 X 420.5	3Ply .315" Mini Rough w/ Alligator	8	
658 Optional	A-1004027	Upper belting	7 x 420.5	3Ply Mini Rough Top w/ Heavy Plate		
660	A-1002461	Upper belting	7 X 420.5	2Ply Texture Top w/ Clipper fastener	8	
660	A-1002462	Upper belting	7 X 420.5	3Ply Mini Rough Top w/ Clipper fastener	8	
660	A-1002981	Upper belting	7 X 420.5	3Ply .315" Thick Mini Rough w/ Clipper fastener	8	
660	A-1003770	Upper belting	7 X 420.5	3Ply .315" Mini Rough w/ Alligator	8	
(660, 664 ALL Optional)	A-1004027	Upper belting	7 x 420.5	3Ply Mini Rough Top w/ Heavy Plate		
664	A-1002461	Upper belting	7 X 420.5	2Ply Texture Top w/ Clipper fastener	8	
664	A-1002462	Upper belting	7 X 420.5	3Ply Mini Rough Top w/ Clipper fastener	8	
664	A-1003975	Upper belting	7 x 420.5	3Ply Mini Rough Top ENDLESS	8	9828294
664	A-1002981	Upper belting	7 X 420.5	3Ply .315" Thick Mini Rough w/ Clipper fastener	8	
664	A-1003770	Upper belting	7 X 420.5	3Ply .315" Mini Rough w/ Alligator	8	
668	A-1002461	Upper belting	7 X 420.5	2Ply Texture Top w/ Clipper fastener	8	
668	A-1002462	Upper belting	7 X 420.5	3Ply Mini Rough Top w/ Clipper fastener	8	
668	A-1002981	Upper belting	7 X 420.5	3Ply .315" Thick Mini Rough w/ Clipper fastener	8	
668	A-1003770	Upper belting	7 x 420.5	3Ply .315" Mini Rough w/ Alligator	8	

Round Baler Belting

Ford / New Holland						
MODELS	PART	DESCRIPTION	SIZE (INCH)	PLY/TEXTURE	# BELTS	REPLACES
678	A-1002864	Upper belting	7 X 343	2Ply Texture Top w/ Clipper fastener	8	9843314
678	A-1002866	Upper belting	7 X 343	3Ply Mini Rough Top w/ Clipper fastener	8	9843314
678	A-1002980	Upper belting	7 X 343	3Ply .315" Mini Rough w/ Clipper fastener	8	
678	A-1006482	Upper belting	7 X 343	3Ply .315" Mini Rough w/ Alligator	8	
688	A-1002461	Upper belting	7 X 420.5	2Ply Texture Top w/ Clipper fastener	8	
688	A-1002462	Upper belting	7 X 420.5	3Ply Mini Rough Top w/ Clipper fastener	8	
688	A-1003975	Upper belting	7 X 420.5	3Ply Mini Rough Top Endless	8	9828294
688	A-1002981	Upper belting	7 X 420.5	3Ply .315" Thick Mini Rough w/ Clipper fastener	8	
688	A-1003770	Upper belting	7 x 420.5	3Ply .315" Mini Rough w/ Alligator	8	
BR730	A-1002459	Upper belting	7 X 272.5	2Ply Texture Top w/ Clipper fastener	6	
BR730	A-1002460	Upper belting	7 X 272.5	3Ply Mini Rough Top w/ Clipper fastener	6	
BR730 High-Moisture	A-1002459	Upper belting	7 X 272.5	2Ply Texture Top w/ Clipper fastener	6	
BR730 High-Moisture	A-1002460	Upper belting	7 X 272.5	3Ply Mini Rough Top w/ Clipper fastener	6	
BR740	A-1002864	Upper belting	7 X 343	2Ply Texture Top w/ Clipper fastener	6	9843314
BR740	A-1002866	Upper belting	7 X 343	3Ply Mini Rough Top w/ Clipper fastener	6	9843314
BR740	A-1002980	Upper belting	7 X 343	3Ply .315" Mini Rough w/ Clipper fastener	8	
BR740	A-1006482	Upper belting	7 X 343	3Ply .315" Mini Rough w/ Alligator	8	
BR740 Silage Special	A-1002864	Upper belting	7 X 343	2Ply Texture Top w/ Clipper fastener	6	
BR740 Silage Special	A-1002866	Upper belting	7 X 343	3Ply Mini Rough Top w/ Clipper fastener	6	
BR740 Silage Special	A-1003974	Upper belting	7 x 343	3Ply Mini Rough Top Endless	6	
BR740 Silage Special	A-9822083-E	Upper Belting; Economy	7 X 343	3Ply Mini Rough Top Endless		
BR740 Silage Special	A-1002980	Upper belting	7 X 343	3Ply .315" Mini Rough w/ Clipper fastener	8	
BR740 Silage Special	A-1006482	Upper belting	7 X 343	3Ply .315" Mini Rough w/ Alligator	8	
BR750	A-1002981	Upper belting	7 X 420.5	3Ply .315" Thick Mini Rough w/ Clipper fastener	8	
BR750 Silage Special	A-9822083-E	Upper Belting; Economy	7 X 343	3Ply Mini Rough Top Endless		
BR750 All Purpose	A-1002461	Upper belting	7 X 420.5	2Ply Texture Top w/ Clipper fastener	6	
BR750 All Purpose	A-1002462	Upper belting	7 X 420.5	3Ply Mini Rough Top w/ Clipper fastener	6	
BR750 All Purpose	A-1003975	Upper belting	7 x 420.5	3Ply Mini Rough Top ENDLESS	6	9828294
BR750 All Purpose	A-1002981	Upper belting	7 X 420.5	3Ply .315" Thick Mini Rough w/ Clipper fastener	8	
BR750 All Purpose	A-1003770	Upper belting	7 x 420.5	3Ply .315" Mini Rough w/ Alligator	8	
BR770	A-1002864	Upper belting	7 X 343	2Ply Texture Top w/ Clipper fastener	8	9843314
BR770	A-1002866	Upper belting	7 X 343	3Ply Mini Rough Top w/ Clipper fastener	8	9843314
BR770	A-1003974	Upper belting	7 x 343	3Ply Mini Rough Top Endless	8	
BR770	A-9822083-E	Upper Belting; Economy	7 X 343	3Ply Mini Rough Top Endless	8	
BR770	A-1002980	Upper belting	7 X 343	3Ply .315" Mini Rough w/ Clipper fastener	8	
BR770	A-1006482	Upper belting	7 X 343	3Ply .315" Mini Rough w/ Alligator	8	
BR780	A-1002462	Upper belting	7 X 420.5	3Ply Mini Rough Top w/ Clipper fastener	8	
BR780	A-1002461	Upper belting	7 X 420.5	2Ply Texture Top w/ Clipper fastener	8	
BR780	A-1003975	Upper belting	7 x 420.5	3Ply Mini Rough Top ENDLESS	8	9828294

Parts are not original equipment parts and are not sponsored, affiliated, or otherwise connected with any major brand.

Round Baler Belting

Parts are not original equipment parts and are not sponsored, affiliated, or otherwise connected with any major brand.

Ford / New Holland						
MODELS	PART	DESCRIPTION	SIZE (INCH)	PLY/TEXTURE	# BELTS	REPLACES
BR780	A-1002981	Upper belting	7 X 420.5	3Ply .315" Thick Mini Rough w/ Clipper fastener	8	
BR780	A-1003770	Upper belting	7 x 420.5	3Ply .315" Mini Rough w/ Alligator	8	
BR7050	A-1002459	Upper belting	7 X 272.5	2Ply Texture Top w/ Clipper fastener	6	
BR7050	A-1002460	Upper belting	7 X 272.5	3Ply Mini Rough Top w/ Clipper fastener	6	
BR7060	A-1002864	Upper belting	7 X 343	2Ply Texture Top w/ Clipper fastener	6	
BR7060	A-1002866	Upper belting	7 X 343	3Ply Mini Rough Top w/ Clipper fastener	6	
BR7060	A-1003974	Upper belting	7 x 343	3Ply Mini Rough Top Endless	6	
BR7060	A-1002980	Upper belting	7 X 343	3Ply .315" Mini Rough w/ Clipper fastener	8	
BR7060	A-1006482	Upper belting	7 X 343	3Ply .315" Mini Rough w/ Alligator	8	
BR7070	A-1002461	Upper belting	7 X 420.5	2Ply Texture Top w/ Clipper fastener	8	
BR7070	A-1002462	Upper belting	7 X 420.5	3Ply Mini Rough Top w/ Clipper fastener	8	
BR7070	A-1003975	Upper belting	7 x 420.5	3Ply Mini Rough Top ENDLESS	8	9828294
BR7070	A-1002981	Upper belting	7 X 420.5	3Ply .315" Thick Mini Rough w/ Clipper fastener	8	
BR7070	A-1003770	Upper belting	7 x 420.5	3Ply .315" Mini Rough w/ Alligator	8	
BR7080	A-1002864	Upper belting	7 X 343	2Ply Texture Top w/ Clipper fastener	8	9843314
BR7080	A-1002866	Upper belting	7 X 343	3Ply Mini Rough Top w/ Clipper fastener	8	9843314
BR7080	A-1003974	Upper belting	7 x 343	3Ply Mini Rough Top Endless	8	
BR7080	A-1002980	Upper belting	7 X 343	3Ply .315" Mini Rough w/ Clipper fastener	8	
BR7080	A-1006482	Upper belting	7 X 343	3Ply .315" Mini Rough w/ Alligator	8	
BR7090	A-1002462	Upper belting	7 X 420.5	3Ply Mini Rough Top w/ Clipper fastener	8	
BR7090	A-1002461	Upper belting	7 X 420.5	2Ply Texture Top w/ Clipper fastener	8	
BR7090	A-1003975	Upper belting	7 x 420.5	3Ply Mini Rough Top ENDLESS	8	9828294
BR7090	A-1002981	Upper belting	7 X 420.5	3Ply .315" Thick Mini Rough w/ Clipper fastener	8	
BR7090	A-1003770	Upper belting	7 x 420.5	3Ply .315" Mini Rough w/ Alligator	8	
660, 664, 688, BR780	A-86548820	Sledge Roll Belt Cleaner Strip	7 X 59.8	3Ply MRT		
640, 644, 648, 650, 654, 658, 678, BR740, BR750	A-9848760	Belt Scraper Cleaner Strips	5 X 44.9	3Ply MRT		
660, 664, 688, BR780	A-9848759	Belt Scraper Cleaner Strip	5 X 59.8	3Ply MRT		

Gehl						
MODELS	PART	DESCRIPTION	SIZE (INCH)	PLY/TEXTURE	# BELTS	REPLACES
1370	A-1005093	Upper belting	6 x 469	2Ply Texture Top w/ Clipper fastener	6	
1370	A-1005092	Upper belting	6 x 469	3Ply Chevron w/ Clipper fastener	6	
1375	A-1005093	Upper belting	6 x 469	2Ply Texture Top w/ Clipper fastener	6	
1375	A-1005092	Upper belting	6 x 469	3Ply Chevron w/ Clipper fastener	6	
1400	A-1000575	Upper belting	6 X 450	2Ply Texture Top w/ Clipper fastener	2	68254
1400	A-1000688	Upper Belting	6 X 450	3Ply Texture Top w/ Clipper fastener	2	68254
1400	A-1000571	Upper belting	5 X 450	2Ply Texture Top w/ Clipper fastener	3	66548
1400	A-1000686	Upper belting	5 X 450	3Ply Texture Top w/ Clipper fastener	3	66548

Round Baler Belting

Gehl						
MODELS	PART	DESCRIPTION	SIZE (INCH)	PLY/TEXTURE	# BELTS	REPLACES
1400	A-1000651	Lower / V-Guide belting	44.25 X 56.5	2Ply Texture Top w/ Clipper fastener	1	69784
(1400, 1440 ALL Early)	A-1000652	Lower / V-Guide belting	44.25 X 69.5	2Ply Texture Top w/ Clipper fastener	1	66556
1450, 1460, 1465	A-1000576	Upper belting belting	6 X 462.5	2Ply Texture Top w/ Clipper fastener	5	75567
1450, 1460	A-1000689	Upper belting	6 X 462.5	3Ply Texture Top w/ Clipper fastener	5	75567
1450, 1460, 1465	A-1000651	Lower / V-Guide belting	44.25 X 56.5	2Ply Texture Top w/ Clipper fastener	1	69784
1465, 1470	A-1000576	Upper belting	6 X 462.5	2Ply Texture Top w/ Clipper fastener	6	75567
1470	A-1000689	Upper belting	6 X 462.5	3Ply Texture Top w/ Clipper fastener	6	75567
1470	A-1002463	Optional Upper belting	6 X 468.5	3Ply Mini Rough Top w/ Clipper fastener	6	
1475	A-1005093	Upper belting	6 x 469	2Ply Texture Top w/ Clipper fastener	6	
1475	A-1005092	Upper belting	6 x 469	3Ply Chevron w/ Clipper fastener	6	
1500	A-1000563	Upper belting	4 X 466	2Ply Texture Top w/ Clipper fastener	9	56479
1500	A-1000675	Upper belting	4 X 466	3Ply Texture Top w/ Clipper fastener	9	56479
1500	A-1000593	Upper belting	10 X 466	2Ply Texture Top w/ Clipper fastener		
1500	A-1000617	Upper belting	10 X 466	3Ply Texture Top w/ Clipper fastener		
1500A, 1600	A-1000577	Upper belting	6 X 466	2Ply Texture Top w/ Clipper fastener	6	59800
1500A, 1600	A-1000690	Upper belting	6 X 466	3Ply Texture Top w/ Clipper fastener	6	59800
1500, 1500A, 1600	A-1000657	Lower / V-Guide belting	60 X 96	2Ply Texture Top w/ Clipper fastener	1	56480
1850	A-1000656	Lower / V-Guide belting	60 X 56.5	2Ply Texture Top w/ Clipper fastener	1	74727
1860	A-1000578	Upper belting	6 X 546	2Ply Texture Top w/ Clipper fastener	7	75742
1860	A-1000691	Upper belting	6 X 546	3Ply Texture Top w/ Clipper fastener	7	75742
1865, 1870	A-1002464	Upper belting	6 X 545.5	2Ply Texture Top w/ Clipper fastener	8	
1865, 1870	A-1002465	Upper belting	6 X 545.5	3Ply Texture Top w/ Clipper fastener	8	
1865, 1870	A-1002857	Optional Upper belting	6 X 545.5	3Ply Chevron w/ Clipper fastener	8	
1865, 1870	A-1002466	Optional Upper belting	6 X 545.5	3Ply Mini Rough Top w/ Clipper fastener	8	
1875	A-1002863	Upper belting	6 X 552	2Ply Texture Top w/ Clipper fastener	8	119477
1875	A-1002858	Upper belting	6 X 552	3Ply Chevron w/ Clipper fastener	8	119477
2480	A-1003783	Upper belting	6 X 468.5	3Ply Mini Rough Top w/ Clipper fastener	6	
2580	A-1003780	Upper belting	6.5 X 474.5	3Ply Reg. Chevron w/ Alligator Rivet	2	
2580	A-1003779	Upper belting	6.5 X 502	3Ply Reg. Chevron w/ Alligator Rivet	4	
2680	A-1003781	Upper belting	6.5 X 556	3Ply Reg. Chevron w/ Alligator Rivet	2	
2680	A-1003782	Upper belting	6.5 X 577.5	3Ply Reg. Chevron w/ Alligator Rivet	4	
2780	A-1003783	Upper belting	6 X 468.5	3Ply Mini Rough Top w/ Clipper fastener	8	
2880	A-1003781	Upper belting	6.5 X 556	3Ply Reg. Chevron w/ Alligator Rivet	4	
2880	A-1003782	Upper belting	6.5 X 577.5	3Ply Reg. Chevron w/ Alligator Rivet	4	
Hesston						
MODELS	PART	DESCRIPTION	SIZE (INCH)	PLY/TEXTURE	# BELTS	REPLACES
514	A-1000397	Upper belting	11 X 73.25	2Ply Texture Top w/ Clipper fastener	25	105003
514	A-1000398	Upper belting	11 X 73.25	3Ply Texture Top w/ Clipper fastener	25	105003
514	A-1000599	Lower belting	11 X 121.25	2Ply Texture Top w/ Clipper fastener	5	29-626A1701.25.01.01 & 104411

Parts are not original equipment parts and are not sponsored, affiliated, or otherwise connected with any major brand.

Round Baler Belting

Parts are not original equipment parts and are not sponsored, affiliated, or otherwise connected with any major brand.

Hesston						
MODELS	PART	DESCRIPTION	SIZE (INCH)	PLY/TEXTURE	# BELTS	REPLACES
514	A-1000623	Lower Belting	11 X 121.25	3Ply Texture Top w/ Clipper fastener	5	29-626A1701.25.01.01 & 104411
514	A-1003970	Optional Lower belting	11 x 121	2Ply Mini Rough Top ENDLESS	5	700709542 w/ 3 Cleaner Cleats
514	A-1003972	Optional Upper belting	11 x 73.25	2Ply Mini Rough Top ENDLESS	25	700709544 w/ 1 Cleaner Cleat
530	A-1001772	Upper belting	4.8 X 365	2Ply Texture Top w/ Clipper fastener	5	700-700-802
530	A-1000357	Upper belting	4.8 X 365	3Ply Mini Rough Top w/ Clipper fastener	5	700-700-802
540	A-1002467	Upper belting	7 X 366	2Ply Texture Top w/ Clipper fastener	6	700-709-185
540	A-1002860	Upper belting	7 X 366	3Ply Chevron w/ Clipper fastener	6	700-709-185
540	A-1003209	Optional Upper belting	7 X 366	3Ply Chevron w/ Titan fastener	6	
540	A-1002468	Optional Upper belting	7 X 366	3Ply Rough Herring Bone w/ Clipper fastener	6	
545	A-1003213	Upper belting	7 X 471.5	2Ply Texture Top w/ Clipper fastener	6	700-714-815
545	A-1003214	Upper belting	7 X 471.5	3Ply Chevron w/ Clipper fastener	6	700-714-815
545	A-1003967	Upper belting	7 X 471.5	3Ply Chevron ENDLESS	6	700714815
545	A-1003210	Upper belting	7 X 471.5	3Ply Chevron w/ Titan fastener	6	
550	A-1002455	Upper belting	6.5 X 572.5	2Ply Texture Top w/ Clipper fastener	2	700-708-740
550	A-1002859	Upper belting	6.5 X 572.5	3Ply Chevron w/ Clipper fastener	2	700-708-740
550	A-1003208	Optional Upper belting	6.5 X 572.5	3Ply Chevron w/ Titan fastener	2	
550	A-1002456	Optional Upper belting	6.5 X 572.5	3Ply Rough Herring Bone w/ Clipper fastener	2	
550	A-1002457	Upper belting	7 X 570	2Ply Texture Top w/ Clipper fastener	4	700-707-162
550	A-1002862	Upper belting	7 X 570	3Ply Chevron w/ Clipper fastener	4	700-707-162
550	A-1003212	Optional Upper Belting	7 X 570	3Ply Chevron w/ Titan fastener	4	700-713-630
550	A-1002458	Optional Upper belting	7 X 570	3Ply Rough Herring Bone w/ Clipper fastener	4	
550	A-1007087	Optional Upper belting	7 x 570	3Ply Continuous Chevron, Alligator Rivet & Pin	4	
555	A-1002865	Upper belting	7 X 562.5	2Ply Texture Top w/ Clipper fastener	6	700-709-999
555	A-1002861	Upper belting	7 X 562.5	3Ply Chevron w/ Clipper fastener	6	700-709-999
555	A-1004105	Upper belting	7 X 562.5	3Ply Chevron w/ AR	6	
555	A-1003211	Optional Upper Belting	7 X 562.5	3Ply Chevron w/ Titan fastener	6	700-713-617
560 SN 1965>	A-1002865	Upper Belting	7 X 562.5	2Ply Texture Top w/ Clipper fastener	6	700-709-999
560 SN 1965>	A-1002861	Upper Belting	7 X 562.5	3Ply Chevron w/ Clipper fastener	6	700-709-999
560 SN 1965>	A-1003211	Optional Upper Belting	7 X 562.5	3Ply Chevron w/ Titan fastener	8	
560	A-1007087	Optional Upper belting	7 x 570	3Ply Continuous Chevron, Alligator Rivet & Pin	4	
560 SN 0220-1964	A-1002457	Upper belting	7 X 570	2Ply Texture Top w/ Clipper fastener	4	700-707-162
560 SN 0220-1964	A-1002862	Upper belting	7 X 570	3Ply Chevron w/ Clipper fastener	4	700-707-162

Round Baler Belting

Hesston						
MODELS	PART	DESCRIPTION	SIZE (INCH)	PLY/TEXTURE	# BELTS	REPLACES
560 SN 0220-1964	A-1003212	Optional Upper Belting	7 X 570	3Ply Chevron w/ Titan fastener	4	700-713-630
560 SN 0220-1964	A-1002455	Optional Upper belting	6.5 X 572.5	2Ply Texture Top w/ Clipper fastener	2	700-708-740
560 SN 0220-1964	A-1002859	Optional Upper belting	6.5 X 572.5	3Ply Chevron w/ Clipper fastener	2	700-708-740
560 SN 0220-1964	A-1003208	Optional Upper belting	6.5 X 572.5	3Ply Chevron w/ Titan fastener	2	
560	A-1007087	Optional Upper belting	7 x 570	3Ply Continuous Chevron, Alligator Rivet & Pin		
560 SN 1965>	A-1004105	Upper belting	7 X 562.5	3Ply Chevron w/ AR	6	
565 Newer	A-1003211	Optional Upper Belting	7 X 562.5	3Ply Chevron w/ Titan fastener	8	
565	A-1004105	Upper belting	7 X 562.5	3Ply Chevron w/ AR	6	
565A	A-1003887	Upper belting	7 X 562.5	Mini-Rough Top w/ Alligator Rivet	8	700728090
730	A-1001772	Upper belting	4.8 X 365	2Ply Texture Top w/ Clipper fastener	5	700-700-802
730	A-1000357	Upper belting	4.8 X 365	3Ply Mini Rough Top w/ Clipper fastener	5	700-700-802
740	A-1002467	Optional Upper belting	7 X 366	2Ply Texture Top w/ Clipper fastener	6	700-709-185
740	A-1002860	Upper belting	7 X 366	3Ply Chevron w/ Clipper fastener	6	700-709-185
740	A-1003209	Upper belting	7 X 366	3Ply Chevron w/ Titan fastener	6	
740	A-1002468	Optional Upper belting	7 X 366	3Ply Rough Herring Bone w/ Clipper fastener	6	
814	A-1000397	Upper belting	11 X 73.25	2Ply Texture Top w/ Clipper fastener	25	105003
814	A-1000398	Upper belting	11 X 73.25	3Ply Texture Top w/ Clipper fastener	25	105003
814	A-1000599	Lower belting	11 X 121.25	2Ply Texture Top w/ Clipper fastener	5	29-626A1701.25.01.01 & 104411
814	A-1000623	Lower Belting	11 X 121.25	3Ply Texture Top w/ Clipper fastener	5	29-626A1701.25.01.01 & 104411
814	A-1003970	Optional Lower belting	11 x 121	2Ply Mini Rough Top ENDLESS	5	700709542 w/ 3 Cleaner Cleats
814	A-1003972	Optional Upper belting	11 x 73.25	2Ply Mini Rough Top ENDLESS	25	700709544 w/ 1 Cleaner Cleat
830	A-1001772	Upper belting	4.8 X 365	2Ply Texture Top w/ Clipper fastener	5	700-700-802
830	A-1000357	Upper belting	4.8 X 365	3Ply Mini Rough Top w/ Clipper fastener	5	700-700-802
840	A-1002467	Optional Upper belting	7 X 366	2Ply Texture Top w/ Clipper fastener	6	700-709-185
840	A-1002860	Optional Upper belting	7 X 366	3Ply Chevron w/ Clipper fastener	6	700-709-185
840	A-1003209	Upper belting	7 X 366	3Ply Chevron w/ Titan fastener	6	
840	A-1002468	Optional Upper belting	7 X 366	3Ply Rough Herring Bone w/ Clipper fastener	6	
845	A-1003335	Upper belting	7 X 475	3Ply Chevron w/ Clipper fastener	8	700-716-049
845	A-1003966	Upper belting	7 x 475	3Ply Mini Rough Top ENDLESS	8	700728091
845	A-1003638	Upper belting	7 X 475	3Ply Chevron w/ Titan fastener	8	
846, 846A	A-1005567	Upper belting	7 x 547	3Ply Continuous Chevron Alligator Rivet		

Parts are not original equipment parts and are not sponsored, affiliated, or otherwise connected with any major brand.

Round Baler Belting

Parts are not original equipment parts and are not sponsored, affiliated, or otherwise connected with any major brand.

Hesston						
MODELS	PART	DESCRIPTION	SIZE (INCH)	PLY/TEXTURE	# BELTS	REPLACES
846, 846A	A-1003965	Upper belting	7 x 547	3Ply Mini Rough Top ENDLESS	8	700728092
846, 846A	A-1003680	Upper belting	7 X 547	3Ply .315 Mini Rough w/ Titan fastener	6	
846, 846A	A-1005804	Upper belting	7 x 547	3Ply .315 MRT w/ Alligator lacing		
855	A-1003335	Upper belting	7 X 475	3Ply Chevron w/ Clipper fastener	8	700-716-049
855	A-1003638	Upper belting	7 X 475	3Ply Chevron w/ Titan fastener	8	
855	A-1003969	Upper belting	7 x 475	3Ply Chevron ENDLESS	8	700-716-049
856	A-1003621	Upper belting	7 X 547	3Ply Chevron w/ Titan fastener	8	
856	A-1003968	Upper belting	7 x 547	3Ply Chevron Endless	8	700717717
856	A-1005800	Upper belting	7 x 547	3Ply Diamond Top w/ Alligator lacing	8	
856	A-1005804	Upper belting	7 x 547	3Ply .315 MRT w/ Alligator lacing	8	
856	A-1005567	Upper Belting	7 X 547	3Ply Continuous Chevron Alligator Rivet	8	
856A	A-1003886	Upper belting	7 X 547	3Ply Mini-Rough w/ Alligator Rivet	8	700728088
856A Optional	A-1005800	Upper belting	7 x 547	3Ply Diamond Top w/ Alligator lacing	8	
856A	A-1005804	Upper belting	7 x 547	3Ply .315 MRT w/ Alligator lacing	8	
856A	A-1005567	Upper Belting	7 X 547	3Ply Continuous Chevron Alligator Rivet	8	
945	A-1003335	Upper belting	7 X 475	3Ply Chevron w/ Clipper fastener	8	700-716-049
945	A-1003966	Upper belting	7 x 475	3Ply Mini Rough Top ENDLESS	6	700728091
945	A-1003638	Upper belting	7 X 475	3Ply Chevron w/ Titan fastener	6	
946	A-1003965	Upper belting	7 x 547	3Ply Mini Rough Top ENDLESS	6	700728092
946	A-1003680	Upper belting	7 X 547	3Ply .315 Mini Rough w/ Titan fastener	6	
946	A-1005804	Upper belting	7 x 547	3Ply .315 MRT w/ Alligator lacing		
946A	A-1005800	Upper belting	7 x 547	3Ply Diamond Top w/ Alligator lacing		
955	A-1003335	Upper belting	7 X 475	3Ply Chevron w/ Clipper fastener	8	700-716-049
955	A-1003969	Upper belting	7 x 475	3Ply Chevron ENDLESS	8	700-716-049
955	A-1003638	Upper belting	7 X 475	3Ply Chevron w/ Titan fastener	8	
956	A-1003621	Upper belting	7 X 547	3Ply Chevron w/ Titan fastener	8	
956	A-1003968	Upper belting	7 x 547	3Ply Chevron Endless	8	700717717
956	A-1005800	Upper belting	7 x 547	3Ply Diamond Top w/ Alligator lacing		
956	A-1005804	Upper belting	7 x 547	3Ply .315 MRT w/ Alligator lacing		
956	A-1005567	Upper Belting	7 X 547	3Ply Continuous Chevron Alligator Rivet		
956A	A-1005800	Upper belting	7 x 547	3Ply Diamond Top w/ Alligator lacing		
5400	A-1000550	Upper belting	4 X 127	2Ply Texture Top w/ Clipper fastener	9	728733
5400	A-1000662	Upper belting	4 X 127	3Ply Texture Top w/ Clipper fastener	9	728733
5500, 5510	A-1000561	Upper belting	4 X 452	2Ply Texture Top w/ Clipper fastener	9	828178
5500, 5510	A-1002854	Upper belting	4 X 452	3Ply Chevron w/ Clipper fastener	9	828178
5500, 5510	A-1000355	Optional Upper belting	4 X 452	3Ply Rough Herring Bone w/ Clipper fastener	9	
5530	A-1001772	Upper belting	4.8 X 365	2Ply Texture Top w/ Clipper fastener	5	700-700-802
5530	A-1000357	Upper belting	4.8 X 365	3Ply Mini Rough Top w/ Clipper fastener	5	700-700-802

Round Baler Belting

Hesston						
MODELS	PART	DESCRIPTION	SIZE (INCH)	PLY/TEXTURE	# BELTS	REPLACES
5540	A-1000572	Upper belting	5.3 X 470	2Ply Texture Top w/ Clipper fastener	6	828335
5540	A-1002855	Upper belting	5.3 X 470	3Ply Chevron w/ Clipper fastener	6	828335
5540	A-1000358	Optional Upper belting	5.3 X 470	3Ply Rough Herring Bone w/ Clipper fastener	6	
5545	A-1001773	Upper belting	5.3 X 465	2Ply Texture Top w/ Clipper fastener	6	
5545	A-1003332	Upper belting	5.3 X 465	3Ply Chevron w/ Clipper fastener	6	
5545	A-1000354	Optional Upper belting	5.3 X 465	3Ply Mini Rough Top w/ Clipper fastener	8	
5580	A-1000572	Upper belting	5.3 X 470	2Ply Texture Top w/ Clipper fastener	8	828335
5580	A-1002855	Upper belting	5.3 X 470	3Ply Chevron w/ Clipper fastener	8	828335
5580	A-1000358	Optional Upper belting	5.3 X 470	3Ply Rough Herring Bone w/ Clipper fastener	8	
5585	A-1001773	Upper belting	5.3 X 465	2Ply Texture Top w/ Clipper fastener	8	
5585	A-1003332	Upper belting	5.3 X 465	3Ply Chevron w/ Clipper fastener	8	
5585	A-1000354	Optional Upper belting	5.3 X 465	3Ply Mini Rough Top w/ Clipper fastener	8	
5600	A-1000554	Upper belting	4 X 400	2Ply Texture Top w/ Clipper fastener	9	728832 & F-158
5600	A-1000666	Upper belting	4 X 400	3Ply Texture Top w/ Clipper fastener	9	728832 & F-158
5600	A-1000585	Optional Upper belting	10 X 400	2Ply Texture Top w/ Clipper fastener		
5600	A-1000697	Optional Upper belting	10 X 400	3Ply Texture Top w/ Clipper fastener		
5600	A-1000658	Lower belting	60 X 120	2Ply Texture Top w/ Clipper fastener	1	728931 V-Guide
5800	A-1000564	Upper belting	4 X 480	2Ply Texture Top w/ Clipper fastener	9	7827991
5800	A-1000363	Upper belting	4 X 480	3Ply Texture Top w/ Clipper fastener	9	7827991
5800 * requires Hesston modification kit	A-1000350	Optional Upper belting*	10 X 480	2Ply Texture Top w/ Clipper fastener		
5800 * requires Hesston modification kit	A-1000618	Optional Upper belting*	10 X 480	3Ply Texture Top w/ Clipper fastener		
John Deere						
MODELS	PART	DESCRIPTION	SIZE (INCH)	PLY/TEXTURE	# BELTS	REPLACES
330, 335, 446, 447	A-1002599	Upper belting	7 X 402.75	3Ply Diamond Top w/ Clipper fastener	2	DC22173
330, 335, 446, 447	A-1003290	Upper belting	7 X 402.75	3Ply Diamond w/ Alligator fastener	2	DC22173
330, 335, 446, 447	A-1002600	Upper belting	7 X 410.25	3Ply Diamond Top w/ Clipper fastener	4	DC22174
330, 335, 446, 447	A-1003289	Upper belting	7 X 410.25	3Ply Diamond w/ Alligator fastener	4	DC22174
330, 335, 446, 447	A-1002942	Upper belting	7 X 402.75	3Ply Diamond w/ Titan fastener	2	
330, 335, 446, 447	A-1002943	Upper belting	7 X 410.25	3Ply Diamond w/ Titan fastener	4	
375, 546, 547	A-1002599	Upper belting	7 X 402.75	3Ply Diamond Top w/ Clipper fastener	4	DC22173
375, 546, 547	A-1003290	Upper belting	7 X 402.75	3Ply Diamond w/ Alligator fastener	4	DC22173
375, 546, 547	A-1002600	Upper belting	7 X 410.25	3Ply Diamond Top w/ Clipper fastener	4	DC22174
375, 546, 547	A-1003289	Upper belting	7 X 410.25	3Ply Diamond w/ Alligator fastener	4	DC22174
375, 546, 547	A-1002942	Upper belting	7 X 402.75	3Ply Diamond w/ Titan fastener	4	
375, 546, 547	A-1002943	Upper belting	7 X 410.25	3Ply Diamond w/ Titan fastener	4	
(385, 456, 457 ALL)	A-1003002	Upper belting	7 X 461	3Ply Diamond Top w/ Clipper fastener	2	

Parts are not original equipment parts and are not sponsored, affiliated, or otherwise connected with any major brand.

Round Baler Belting

John Deere						
MODELS	PART	DESCRIPTION	SIZE (INCH)	PLY/TEXTURE	# BELTS	REPLACES
(385, 456, 457 ALL)	A-1003004	Upper belting	7 X 466.5	3Ply Diamond Top w/ Clipper fastener	4	
(385, 456, 457 ALL)	A-1003003	Upper belting	7 X 461	3Ply Diamond w/ Titan fastener	2	
(385, 456, 457 ALL)	A-1003005	Upper belting	7 X 466.5	3Ply Diamond w/ Titan fastener	4	
(385, 456, 457 ALL)	A-1005806	Upper belting	7 x 461	3Ply Diamond Top w/ Alligator fastner	2	
(385, 456, 457 ALL)	A-1005807	Upper belting	7 x 466.5	3Ply Diamond Top w/ Alligator fastener	4	
410	A-1000555	Upper belting	4 X 415	2Ply Texture Top w/ Clipper fastener	6	AE35930
410	A-1000667	Upper belting	4 X 415	3Ply Texture Top w/ Clipper fastener	6	AE35930
410	A-1000586	Upper belting	10 X 415	2Ply Texture Top w/ Clipper fastener		
410	A-1000698	Upper belting	10 X 415	3Ply Texture Top w/ Clipper fastener		
410	A-1001742	Upper belting	12 X 417.5	2Ply Texture Top w/ Clipper fastener		AE41723
410	A-1001743	Upper belting	12 X 417.5	3Ply Texture Top w/ Clipper fastener		AE41723
410	A-1003986	Lower belting	8 x 74.5	3Ply Texture Top ENDLESS	5	AE37525
410	A-1003811	Lower belting	8 X 74.38	4Ply Texture Top ENDLESS	5	
430, 435	A-1000388	Upper belting	7 X 525	3Ply Diamond Top w/ Clipper fastener	2	AE40797
430, 435	A-1003288	Upper belting	7 X 525	3Ply Diamond w/ Alligator fastener	2	AE53295
430, 435	A-1000389	Upper belting	7 X 531	3Ply Diamond Top w/ Clipper fastener	4	AE40798
430, 435	A-1003287	Upper belting	7 X 531	3Ply Diamond w/ Alligator fastener	4	AE53296
430, 435	A-1002940	Upper belting	7 X 525	3Ply Diamond w/ Hvy Plate Fastener	2	AE53295
430, 435	A-1002941	Upper belting	7 X 531	3Ply Diamond w/ Hvy Plate Fastener	4	AE53296
466, 467	A-1000388	Upper belting	7 X 525	3Ply Diamond Top w/ Clipper fastener	2	AE40797
466, 467	A-1003288	Upper belting	7 X 525	3Ply Diamond w/ Alligator fastener	2	AE53295
466, 467	A-1000389	Upper belting	7 X 531	3Ply Diamond Top w/ Clipper fastener	4	AE40798
466, 467	A-1003287	Upper belting	7 X 531	3Ply Diamond w/ Alligator fastener	4	AE53296
466, 467	A-1002940	Upper belting	7 X 525	3Ply Diamond w/ Hvy Plate Fastener	2	AE53295
466, 467	A-1002941	Upper belting	7 X 531	3Ply Diamond w/ Hvy Plate Fastener	4	AE53296
500	A-1000556	Upper belting	4 X 422	2Ply Texture Top w/ Clipper fastener	9	AE3390
500	A-1000668	Upper belting	4 X 422	3Ply Texture Top w/ Clipper fastener	9	AE3390
500	A-1000587	Upper belting	10 X 422	2Ply Texture Top w/ Clipper fastener		
500	A-1000699	Upper belting	10 X 422	3Ply Texture Top w/ Clipper fastener		
500	A-1000661	Lower / V-Guide belting	60 X 138	2Ply Texture Top w/ Clipper fastener	1	AE58828
510	A-1000565	Upper belting	4 X 484	2Ply Texture Top w/ Clipper fastener	9	AE35484
510	A-1000677	Upper belting	4 X 484	3Ply Texture Top w/ Clipper fastener	9	AE35484
510	A-1000595	Upper belting	10 X 484	2Ply Texture Top w/ Clipper fastener		
510	A-1000619	Upper belting	10 X 484	3Ply Texture Top w/ Clipper fastener		
510	A-1000650	Upper belting	12 X 486.5	2Ply Texture Top w/ Clipper fastener		AE41724
510	A-1000624	Upper belting	12 X 486.5	3Ply Texture Top w/ Clipper fastener		AE41724
510	A-1003986	Lower belting	8 x 74.5	3Ply Texture Top ENDLESS	7	AE37525
510	A-1003811	Lower belting	8 X 74.38	4Ply Texture Top ENDLESS	7	
530, 535, 566, 567	A-1000388	Upper belting	7 X 525	3Ply Diamond Top w/ Clipper fastener	4	AE40797
530, 535, 566, 567	A-1003288	Upper belting	7 X 525	3Ply Diamond w/ Alligator fastener	4	AE53295

Parts are not original equipment parts and are not sponsored, affiliated, or otherwise connected with any major brand.

Round Baler Belting

John Deere						
MODELS	PART	DESCRIPTION	SIZE (INCH)	PLY/TEXTURE	# BELTS	REPLACES
530, 535, 566, 567	A-1000389	Upper belting	7 X 531	3Ply Diamond Top w/ Clipper fastener	4	AE40798
530, 535, 566, 567	A-1003287	Upper belting	7 X 531	3Ply Diamond w/ Alligator fastener	4	AE53296
530, 535, 566, 567	A-1002940	Upper belting	7 X 525	3Ply Diamond w/ Hvy Plate Fastener	4	AE53295
530, 535, 566, 567	A-1002941	Upper belting	7 X 531	3Ply Diamond w/ Hvy Plate Fastener	4	AE53296
556, 557	A-1003002	Upper belting	7 X 461	3Ply Diamond Top w/ Clipper fastener	4	
556, 557	A-1003004	Upper belting	7 X 466.5	3Ply Diamond Top w/ Clipper fastener	4	
556, 557	A-1003003	Upper belting	7 X 461	3Ply Diamond w/ Titan fastener	4	
556, 557	A-1003005	Upper belting	7 X 466.5	3Ply Diamond w/ Titan fastener	4	
556, 557	A-1005806	Upper belting	7 x 461	3Ply Diamond Top w/ Alligator fastner	4	
556, 557	A-1005807	Upper belting	7 x 466.5	3Ply Diamond Top w/ Alligator fastener	4	

Massey Ferguson						
MODELS	PART	DESCRIPTION	SIZE (INCH)	PLY/TEXTURE	# BELTS	REPLACES
140	A-1001772	Upper Belting	4.8 X 365	2Ply Texture Top w/ Clipper fastener	5	700-700-802
140	A-1000357	Upper Belting	4.8 X 365	3Ply Mini Rough Top w/ Clipper fastener	5	700-700-802
142	A-1002467	Upper Belting	7 X 366	2Ply Texture Top w/ Clipper fastener	6	
142	A-1002860	Upper Belting	7 X 366	3Ply Chevron w/ Clipper fastener	6	
142	A-1003209	Upper Belting	7 X 366	3Ply Chevron w/ Titan fastener	6	
144	A-1002865	Upper Belting	7 X 562.5	2Ply Texture Top w/ Clipper fastener	6	
144	A-1002861	Upper Belting	7 X 562.5	3Ply Chevron w/ Clipper fastener	6	
144	A-1003211	Optional Upper Belting	7 X 562.5	3Ply Chevron w/ Titan fastener	6	
144	A-1003887	Upper Belting	7 X 562.5	Mini-Rough Top w/ Alligator Rivet	6	700728090
146	A-1002865	Upper Belting	7 X 562.5	2Ply Texture Top w/ Clipper fastener	6	
146	A-1002861	Upper Belting	7 X 562.5	3Ply Chevron w/ Clipper fastener	6	
146	A-1003211	Optional Upper Belting	7 X 562.5	3Ply Chevron w/ Titan fastener	6	
146	A-1003887	Upper belting	7 X 562.5	Mini-Rough Top w/ Alligator Rivet	8	700728090
450	A-1000553	Upper belting	4 X 388	2Ply Texture Top w/ Clipper fastener	8	F-685
450	A-1000665	Upper belting	4 X 388	3Ply Texture Top w/ Clipper fastener	8	F-685
450	A-1000582	Upper belting	9 X 388	2Ply Texture Top w/ Clipper fastener		
450	A-1000694	Upper belting	9 X 388	3Ply Texture Top w/ Clipper fastener		
450 with "V" guide	A-1000658	Lower belting	60 X 120	2Ply Texture Top w/ Clipper fastener	1	728931 V-Guide
560	A-1000559	Upper belting	4 X 440	2Ply Texture Top w/ Clipper fastener	9	1045-352-M92 & F-894
560	A-1000671	Upper belting	4 X 440	3Ply Texture Top w/ Clipper fastener	9	1045-352-M92 & F-894
560	A-1000590	Upper belting	10 X 440	2Ply Texture Top w/ Clipper fastener		1096895M91
560	A-1000614	Upper belting	10 X 440	3Ply Texture Top w/ Clipper fastener		1096895M91
634	A-1002469	Upper belting	6 X 428	2Ply Texture Top w/ Clipper fastener	4	
634	A-1002470	Upper belting	6 X 428	3Ply Texture Top w/ Clipper fastener	4	
645	A-1000394	Upper belting	6.5 X 528	2Ply Texture Top w/ Clipper fastener	6	
645	A-1000395	Upper belting	6.5 X 528	3Ply Texture Top w/ Clipper fastener	6	
656	A-1000394	Upper belting	6.5 X 528	2Ply Texture Top w/ Clipper fastener	8	

Parts are not original equipment parts and are not sponsored, affiliated, or otherwise connected with any major brand.

Round Baler Belting

Massey Ferguson						
MODELS	PART	DESCRIPTION	SIZE (INCH)	PLY/TEXTURE	# BELTS	REPLACES
656	A-1000395	Upper belting	6.5 X 528	3Ply Texture Top w/ Clipper fastener	8	
822	A-1002717	Front Upper belting	6.375 X 187.8	2Ply Texture Top w/ Clipper fastener	6	
822	A-1002869	Front Upper belting	6.375 X 187.8	3Ply Mini Rough Top w/ Clipper fastener	6	
822	A-1002721	Rear Upper belting	6.375 X 226.8	2Ply Texture Top w/ Clipper fastener	6	
822	A-1002871	Rear Upper belting	6.375 X 226.8	3Ply Mini Rough Top w/ Clipper fastener	6	
825	A-1000576	Upper belting	6 X 462.5	2Ply Texture Top w/ Clipper fastener	6	
825	A-1002856	Upper belting	6 X 462.5	3Ply Chevron w/ Clipper fastener	6	
828	A-1002719	Front Upper belting	6.375 X 211.42	2Ply Texture Top w/ Clipper fastener	6	
828	A-1002870	Front Upper belting	6.375 X 211.42	3Ply Mini Rough Top w/ Clipper fastener	6	
828	A-1002723	Rear Upper belting	6.375 X 306.3	2Ply Texture Top w/ Clipper fastener	6	
828	A-1002872	Rear Upper belting	6.375 X 306.3	3Ply Mini Rough Top w/ Clipper fastener	6	
834	A-1002719	Front Upper belting	6.375 X 211.42	2Ply Texture Top w/ Clipper fastener	8	
834	A-1002870	Front Upper belting	6.375 X 211.42	3Ply Mini Rough Top w/ Clipper fastener	8	
834	A-1002723	Rear Upper belting	6.375 X 306.3	2Ply Texture Top w/ Clipper fastener	8	
834	A-1002872	Rear Upper belting	6.375 X 306.3	3Ply Mini Rough Top w/ Clipper fastener	8	
835	A-1002464	Upper belting	6 X 545.5	2Ply Texture Top w/ Clipper fastener	8	
835	A-1002857	Upper belting	6 X 545.5	3Ply Chevron w/ Clipper fastener	8	
1440, 1450, 1455	A-1000558	Upper belting	4 X 436	2Ply Texture Top w/ Clipper fastener	8	826-003
1440, 1450, 1455	A-1000670	Upper belting	4 X 436	3Ply Texture Top w/ Clipper fastener	8	826-003
1440, 1450, 1455	A-1000390	Upper belting	9 X 436	2Ply Texture Top w/ Clipper fastener		
1440, 1450, 1455	A-1000391	Upper belting	9 X 436	3Ply Texture Top w/ Clipper fastener		
1440, 1450, 1455	A-1000589	Upper belting	10 X 436	2Ply Texture Top w/ Clipper fastener		4075-001
1440, 1450, 1455	A-1000613	Upper belting	10 X 436	3Ply Texture Top w/ Clipper fastener		826-003
1550, 1560, 1565	A-1000567	Upper belting	4 X 512	2Ply Texture Top w/ Clipper fastener	6	1053-386-M91 & 1826-001
1550, 1560, 1565	A-1000679	Upper belting	4 X 512	3Ply Texture Top w/ Clipper fastener	6	1053386M91, 1826001
1550, 1560, 1565	A-1000583	Upper / Options belting	9 X 512	2Ply Texture Top w/ Clipper fastener	3	
1550, 1560, 1565	A-1000695	Upper / Options belting	9 X 512	3Ply Texture Top w/ Clipper fastener	3	
1550, 1560, 1565	A-1000597	Upper / Optional belting	10 X 512	2Ply Texture Top w/ Clipper fastener	2	1053387M91
1550, 1560, 1565	A-1000621	Upper / Optional belting	10 X 512	3Ply Texture Top w/ Clipper fastener	2	1053387M91
1734	A-1001772	Upper Belting	4.8 X 365	2Ply Texture Top w/ Clipper fastener	5	700-700-802
1734	A-1000357	Upper Belting	4.8 X 365	3Ply Mini Rough Top w/ Clipper fastener	5	700-700-802
1744	A-1002467	Upper Belting	7 X 366	2Ply Texture Top w/ Clipper fastener	6	
1744	A-1002860	Upper Belting	7 X 366	3Ply Chevron w/ Clipper fastener	6	
1744	A-1003209	Upper Belting	7 X 366	3Ply Chevron w/ Titan fastener	6	

Parts are not original equipment parts and are not sponsored, affiliated, or otherwise connected with any major brand.

Round Baler Belting

McKee						
MODELS	PART	DESCRIPTION	SIZE (INCH)	PLY/TEXTURE	# BELTS	REPLACES
875, 878	A-1001610	Upper belting	4.75 X 64.75	2Ply Texture Top w/ Clipper fastener	45	
875, 878	A-1001611	Upper belting	4.75 X 64.75	3Ply Texture Top w/ Clipper fastener	45	
875, 878	A-1001612	Lower belting	7 X 104.5	2Ply Texture Top w/ Clipper fastener	6	
875, 878	A-1001613	Lower belting	7 X 104.5	3Ply Texture Top w/ Clipper fastener	6	
875, 878	A-1005816	Baler Belt, Upper	7 x 64.5	3Ply Texture Top w/ Clipper Lacing		
875, 878	A-1005817	Baler Belt, Upper	7 x 64.5	2 Ply, Texture Top, W/ Clipper Lacing		
1500, 1578	A-1000569	Upper belting	4.75 X 73.25	2Ply Texture Top w/ Clipper fastener	55	29-628A1701.25.01.07 & 104412
1500, 1578	A-1000685	Upper belting	4.75 X 73.25	3Ply Texture Top w/ Clipper fastener	55	29-628A1701.25.01.07 & 104412
1500, 1578	A-1000599	Lower belting	11 X 121.25	2Ply Texture Top w/ Clipper fastener	5	29-626A1701.25.01.01 & 104411
1500, 1578	A-1000623	Lower belting	11 X 121.25	3Ply Texture Top w/ Clipper fastener	5	29-626A1701.25.01.01 & 104411
1500, 1578	A-1000570	Bk-cleat belting	4.75 X 73.25	2Ply Texture Top w/ Clipper fastener		29-627A1701.25.01.11 & 104104
1500, 1578	A-1001744	Bk-cleat belting	4.75 X 73.25	3Ply Texture Top w/ Clipper fastener		29-627A1701.25.01.11 & 104104
1500, 1578	A-1003972	Optional Upper belting	11 x 73.25	2Ply Mini Rough Top ENDLESS	25	700709544 w/ 1 Cleaner Cleat
1500, 1578	A-1000397	Upper Belting	11 X 73.25	2Ply Texture Top w/ Clipper fastener	25	
1500, 1578	A-1003970	Lower belting	11 x 121	2Ply Mini Rough Top ENDLESS	5	700709542 w/ 3 Cleaner Cleats
1500, 1578	A-1000398	Upper Belting	11 X 73.25	3Ply Texture Top w/ Clipper fastener	25	
New Idea						
MODELS	PART	DESCRIPTION	SIZE (INCH)	PLY/TEXTURE	# BELTS	REPLACES
483	A-1000399	Lower Belting	11 X 103.5	2Ply Texture Top w/ Clipper fastener	5	
483	A-1000400	Lower Belting	11 X 103.5	3Ply Texture Top w/ Clipper fastener	5	
(483, 484 ALL Newer)	A-1000397	Lower Belting	11 X 73.25	2Ply Texture Top w/ Clipper fastener	12	
(483, 484 ALL Newer)	A-1000398	Lower Belting	11 X 73.25	3Ply Texture Top w/ Clipper fastener	12	
(483, 484 ALL Early)	A-1000569	Upper Belting	4.75 X 73.25	2Ply Texture Top w/ Clipper fastener	30	29-628A1701.25.01.07 & 104412
(483, 484 ALL Early)	A-1000685	Upper Belting	4.75 X 73.25	3Ply Texture Top w/ Clipper fastener	30	29-628A1701.25.01.07 & 104412
484	A-1000399	Lower Belting	11 X 103.5	2Ply Texture Top w/ Clipper fastener	5	
484	A-1000400	Lower Belting	11 X 103.5	3Ply Texture Top w/ Clipper fastener	5	
485, 4855	A-1000397	Upper Belting	11 X 73.25	2Ply Texture Top w/ Clipper fastener	20	105003
485, 4855	A-1000398	Upper Belting	11 X 73.25	3Ply Texture Top w/ Clipper fastener	20	105003
485, 4855	A-1000599	Upper Belting	11 X 121.25	2Ply Texture Top w/ Clipper fastener	4	29-626A1701.25.01.01 & 104411
485, 4855	A-1000623	Upper Belting	11 X 121.25	3Ply Texture Top w/ Clipper fastener	4	29-626A1701.25.01.01 & 104411
485, 4855	A-1003970	Lower belting	11 x 121	2Ply Mini Rough Top ENDLESS	4	700709542 w/ 3 Cleaner Cleats
485, 4855	A-1003972	Optional Upper belting	11 x 73.25	2Ply Mini Rough Top ENDLESS	20	

Parts are not original equipment parts and are not sponsored, affiliated, or otherwise connected with any major brand.

Round Baler Belting

Parts are not original equipment parts and are not sponsored, affiliated, or otherwise connected with any major brand.

New Idea						
MODELS	PART	DESCRIPTION	SIZE (INCH)	PLY/TEXTURE	# BELTS	REPLACES
(456, 486, 4865 ALL Early)	A-1000569	Upper Belting	4.75 X 73.25	2Ply Texture Top w/ Clipper fastener	55	29-628A1701.25.01.07 & 104412
(456, 486, 4865 ALL Early)	A-1000685	Upper Belting	4.75 X 73.25	3Ply Texture Top w/ Clipper fastener	55	29-628A1701.25.01.07 & 104412
(456, 486, 4865 ALL Newer)	A-1000397	Upper Belting	11 X 73.25	2Ply Texture Top w/ Clipper fastener	25	
(456, 486, 4865 ALL Newer)	A-1000398	Upper Belting	11 X 73.25	3Ply Texture Top w/ Clipper fastener	25	
(456, 486, 4865 ALL)	A-1000599	Lower Belting	11 X 121.25	2Ply Texture Top w/ Clipper fastener	5	29-626A1701.25.01.01 & 104411
(456, 486, 4865 ALL)	A-1000623	Lower Belting	11 X 121.25	3Ply Texture Top w/ Clipper fastener	5	29-626A1701.25.01.01 & 104411
456, 486, 4865	A-1000570	Bk-cleat Belting	4.75 X 73.25	2Ply Texture Top w/ Clipper fastener		29-627A1701.25.01.11 & 104104
456, 486, 4865	A-1001744	Bk-cleat Belting	4.75 X 73.25	3Ply Texture Top w/ Clipper fastener		29-627A1701.25.01.11 & 104104
456, 486, 4865	A-1003987	Lower belting	11 x 121	2Ply Texture Top ENDLESS	5	700709542
	A-1003970	Optional Lower belting	11 x 121	2Ply Mini Rough Top ENDLESS	5	700709542 w/ 3 Cleaner Cleats
456, 486, 4865	A-1003972	Upper belting	11 x 73.25	2Ply Mini Rough Top ENDLESS		
4643	A-1001772	Upper Belting	4.8 X 365	2Ply Texture Top w/ Clipper fastener	5	700-700-802
4643	A-1000357	Upper Belting	4.8 X 365	3Ply Mini Rough Top w/ Clipper fastener	5	700-700-802
4644	A-1002467	Upper Belting	7 X 366	2Ply Texture Top w/ Clipper fastener	6	
4644	A-1002860	Upper Belting	7 X 366	3Ply Chevron w/ Clipper fastener	6	
4644	A-1003209	Upper Belting	7 X 366	3Ply Chevron w/ Titan fastener	6	
4664	A-1002865	Upper Belting	7 X 562.5	2Ply Texture Top w/ Clipper fastener	6	
4664	A-1002861	Upper Belting	7 X 562.5	3Ply Chevron w/ Clipper fastener	6	
4664	A-1003211	Optional Upper Belting	7 X 562.5	3Ply Chevron w/ Titan fastener	6	
4665	A-1002865	Upper Belting	7 X 562.5	2Ply Texture Top w/ Clipper fastener	8	
4665	A-1002861	Upper Belting	7 X 562.5	3Ply Chevron w/ Clipper fastener	8	
4665	A-1003211	Optional Upper Belting	7 X 562.5	3Ply Chevron w/ Titan fastener	8	
4845	A-1000398	Upper Belting	11 X 73.25	3Ply Texture Top w/ Clipper fastener	15	
4845	A-1000599	Lower belting	11 X 121.25	2Ply Texture Top w/ Clipper fastener	5	
4845	A-1000623	Lower Belting	11 X 121.25	3Ply Texture Top w/ Clipper fastener	5	
4845	A-1003987	Lower belting	11 X 121	2Ply Texture Top ENDLESS	5	700709542
	A-1003970	Optional Lower belting	11 x 121	2Ply Mini Rough Top ENDLESS	5	700709542 w/ 3 Cleaner Cleats
4845	A-1003972	Upper belting	11 x 73.25	2Ply Mini Rough Top ENDLESS	15	
6243	A-1001772	Upper Belting	4.8 X 365	2Ply Texture Top w/ Clipper fastener	5	700-700-802
6243	A-1000357	Upper Belting	4.8 X 365	3Ply Mini Rough Top w/ Clipper fastener	5	700-700-802
6244	A-1002467	Upper Belting	7 X 366	2Ply Texture Top w/ Clipper fastener	6	
6244	A-1002860	Upper Belting	7 X 366	3Ply Chevron w/ Clipper fastener	6	
6244	A-1003209	Upper Belting	7 X 366	3Ply Chevron w/ Titan fastener	6	

Round Baler Belting

New Idea						
MODELS	PART	DESCRIPTION	SIZE (INCH)	PLY/TEXTURE	# BELTS	REPLACES
6343	A-1001772	Upper Belting	4.8 X 365	2Ply Texture Top w/ Clipper fastener	5	700-700-802
6343	A-1000357	Upper Belting	4.8 X 365	3Ply Mini Rough Top w/ Clipper fastener	5	700-700-802
6344	A-1002467	Upper Belting	7 X 366	2Ply Texture Top w/ Clipper fastener	6	
6344	A-1002860	Upper Belting	7 X 366	3Ply Chevron w/ Clipper fastener	6	
6344	A-1002467	Upper Belting	7 X 366	2Ply Texture Top w/ Clipper fastener	6	
6344	A-1002860	Upper Belting	7 X 366	3Ply Chevron w/ Clipper fastener	6	
6344	A-1003209	Upper Belting	7 X 366	3Ply Chevron w/ Titan fastener	6	
6345	A-1003638	Upper belting	7 X 475	3Ply Chevron w/ Titan fastener	6	
6345	A-1003670	Upper belting	7 X 475	3Ply .315 MRT w/ Titan fastener	8	
6364, 6464	A-1003621	Upper Belting	7 X 547	3Ply Chevron w/ Titan fastener	6	
6364, 6464	A-1005567	Upper Belting	7 X 547	3Ply Continuous Chevron Alligator Rivet	6	
6364, 6464	A-1003886	Optional Upper Belting	7 X 547	3Ply Mini-Rough w/ Alligator Rivet	6	
6365, 6465	A-1003621	Upper Belting	7 X 547	3Ply Chevron w/ Titan fastener	6	
6365, 6465	A-1005567	Upper Belting	7 X 547	3Ply Continuous Chevron Alligator Rivet	6	
6365, 6465	A-1003886	Optional Upper Belting	7 X 547	3Ply Mini-Rough w/ Alligator Rivet	6	
Vermeer						
MODELS	PART	DESCRIPTION	SIZE (INCH)	PLY/TEXTURE	# BELTS	REPLACES
403F, 403G	A-1000551	Upper Belting	4 X 358	2Ply Texture Top w/ Clipper fastener	6	
403F, 403G	A-1000663	Upper Belting	4 X 358	3Ply Texture Top w/ Clipper fastener	6	
403F, 403G	A-1000581	Upper Belting	9 X 358	2Ply Texture Top w/ Clipper fastener		
403F, 403G	A-1000693	Upper Belting	9 X 358	3Ply Texture Top w/ Clipper fastener		
503I	A-1000392	Upper Belting	6.5 X 431	2Ply Texture Top w/ Clipper fastener	4	
503I	A-1000393	Upper Belting	6.5 X 431	3Ply Texture Top w/ Clipper fastener	4	
504C	A-1000553	Upper Belting	4 X 388	2Ply Texture Top w/ Clipper fastener	8	F-685
504C	A-1000665	Upper Belting	4 X 388	3Ply Texture Top w/ Clipper fastener	8	F-685
504C	A-1000582	Upper Belting	9 X 388	2Ply Texture Top w/ Clipper fastener		
504C	A-1000694	Upper Belting	9 X 388	3Ply Texture Top w/ Clipper fastener		
504F, 504G, 504H	A-1000558	Upper Belting	4 X 436	2Ply Texture Top w/ Clipper fastener	8	826-003
504F, 504G, 504H	A-1000670	Upper Belting	4 X 436	3Ply Texture Top w/ Clipper fastener	8	826-003
504F, 504G, 504H	A-1000589	Upper Belting	10 X 436	2Ply Texture Top w/ Clipper fastener		4075-001
504F, 504G, 504H	A-1000613	Upper Belting	10 X 436	3Ply Texture Top w/ Clipper fastener		826-003
504F, 504G, 504H	A-1000390	Upper Belting	9 X 436	2Ply Texture Top w/ Clipper fastener		
504F, 504G, 504H	A-1000391	Upper Belting	9 X 436	3Ply Texture Top w/ Clipper fastener		
504I all versions	A-1002469	Upper Belting	6 X 428	2Ply Texture Top w/ Clipper fastener	6	
504I all versions	A-1002470	Upper Belting	6 X 428	3Ply Texture Top w/ Clipper fastener	6	
504IS	A-1002569	Upper Belting	6 X 424	2Ply Texture Top w/ Clipper fastener	6	
504IS	A-1002570	Upper Belting	6 X 424	3Ply Texture Top w/ Clipper fastener	6	

Parts are not original equipment parts and are not sponsored, affiliated, or otherwise connected with any major brand.

Round Baler Belting

Parts are not original equipment parts and are not sponsored, affiliated, or otherwise connected with any major brand.

Vermeer						
MODELS	PART	DESCRIPTION	SIZE (INCH)	PLY/TEXTURE	# BELTS	REPLACES
504IS	A-1002563	Optional Upper Belting	14 X 424	2Ply Texture Top w/ Clipper fastener	2	
504IS	A-1002564	Optional Upper Belting	14 X 424	3Ply Texture Top w/ Clipper fastener	2	
504L	A-1002569	Upper Belting	6 X 424	2Ply Texture Top w/ Clipper fastener	2	
504L	A-1002570	Upper Belting	6 X 424	3Ply Texture Top w/ Clipper fastener	2	
504L	A-1002563	Upper Belting	14 X 424	2Ply Texture Top w/ Clipper fastener	2	
504L	A-1002564	Upper Belting	14 X 424	3Ply Texture Top w/ Clipper fastener	2	
505I all versions	A-1002569	Upper Belting	6 X 424	2Ply Texture Top w/ Clipper fastener	8	
505I all versions	A-1002570	Upper Belting	6 X 424	3Ply Texture Top w/ Clipper fastener	8	
505I all versions	A-1002569	Optional Upper Belting	6 X 424	2Ply Texture Top w/ Clipper fastener	8	Optional
505I all versions	A-1002570	Optional Upper Belting	6 X 424	3Ply Texture Top w/ Clipper fastener	8	Optional
505I all versions	A-1002563	Optional Upper Belting	14 X 424	2Ply Texture Top w/ Clipper fastener	3	Optional
505I all versions	A-1002564	Optional Upper Belting	14 X 424	3Ply Texture Top w/ Clipper fastener	3	Optional
505L	A-1002569	Upper Belting	6 X 424	2Ply Texture Top w/ Clipper fastener	2	
505L	A-1002570	Upper Belting	6 X 424	3Ply Texture Top w/ Clipper fastener	2	
505L	A-1002563	Upper Belting	14 X 424	2Ply Texture Top w/ Clipper fastener	3	
505L	A-1002564	Upper Belting	14 X 424	3Ply Texture Top w/ Clipper fastener	3	
5400 Rebel	A-1002563	Upper Belting	14 X 424	2Ply Texture Top w/ Clipper fastener	2	
5400 Rebel	A-1002564	Upper Belting	14 X 424	3Ply Texture Top w/ Clipper fastener	2	
5400 Rebel	A-1002569	Upper Belting	6 X 424	2Ply Texture Top w/ Clipper fastener	2	
5400 Rebel	A-1002570	Upper Belting	6 X 424	3Ply Texture Top w/ Clipper fastener	2	
5500 Rebel	A-1003791	Upper Belting	14 X 450	2Ply Texture Top w/ Clipper fastener	2	
5500 Rebel	A-1003794	Upper Belting	14 X 450	3Ply Texture Top w/ Clipper fastener	2	
5500 Rebel	A-1003793	Upper Belting	6 X 450	2Ply Texture Top w/ Clipper fastener	2	
5500 Rebel	A-1000688	Upper Belting	6 X 450	3Ply Texture Top w/ Clipper fastener	2	
554XL	A-1003791	Upper Belting	14 X 450	2Ply Texture Top w/ Clipper fastener	2	
554XL	A-1003794	Upper Belting	14 X 450	3Ply Texture Top w/ Clipper fastener	2	
555XL	A-1003791	Upper Belting	14 X 450	2Ply Texture Top w/ Clipper fastener	3	
555XL	A-1003794	Upper Belting	14 X 450	3Ply Texture Top w/ Clipper fastener	3	
555XL	A-1003793	Upper Belting	6 X 450	2Ply Texture Top w/ Clipper fastener	2	
555XL	A-1000688	Upper Belting	6 X 450	3Ply Texture Top w/ Clipper fastener	2	
604M	A-1005818	Upper Belting	7 X 522	2Ply Texture Top Clipper Lacing	3	
604M	A-1005809	Upper Belting	7 X 522	3Ply Texture Top w/ AR	3	
604M	A-1005819	Upper Belting	7 X 533	2Ply Texture Top Clipper Lacing	3	
604M	A-1005808	Upper Belting	7 X 533	3Ply Texture Top w/ AR	3	
604XL	A-1002565	Upper Belting	14 X 528	2Ply Texture Top w/ Clipper fastener	2	
604XL	A-1002566	Upper Belting	14 X 528	3Ply Texture Top w/ Clipper fastener	2	
604XL	A-1000394	Upper Belting	6.5 X 528	2Ply Texture Top w/ Clipper fastener	2	

Round Baler Belting

Vermeer						
MODELS	PART	DESCRIPTION	SIZE (INCH)	PLY/TEXTURE	# BELTS	REPLACES
604XL	A-1000395	Upper Belting	6.5 X 528	3Ply Texture Top w/ Clipper fastener	2	
605A	A-1000554	Upper Belting	4 X 400	2Ply Texture Top w/ Clipper fastener	9	728832 & F-158
605A	A-1000666	Upper Belting	4 X 400	3Ply Texture Top w/ Clipper fastener	9	728832 & F-158
605A	A-1000585	Upper Belting	10 X 400	2Ply Texture Top w/ Clipper fastener		
605A	A-1000697	Upper Belting	10 X 400	3Ply Texture Top w/ Clipper fastener		
605B	A-1000552	Upper Belting	4 X 387	2Ply Texture Top w/ Clipper fastener	9	F-1670
605B	A-1000664	Upper Belting	4 X 387	3Ply Texture Top w/ Clipper fastener	9	F-1670
605B	A-1000625	Upper Belting	10 X 387	2Ply Texture Top w/ Clipper fastener		
605B	A-1000626	Upper Belting	10 X 387	3Ply Texture Top w/ Clipper fastener		
(605A, 605B ALL "V"-Guide)	A-1000658	Lower Belting	60 X 120	2Ply Texture Top w/ Clipper fastener	1	
605C	A-1000559	Upper Belting	4 X 440	2Ply Texture Top w/ Clipper fastener	9	1045-352-M92 & F-894
605C	A-1000671	Upper Belting	4 X 440	3Ply Texture Top w/ Clipper fastener	9	1045-352-M92 & F-894
605C	A-1000590	Upper Belting	10 X 440	2Ply Texture Top w/ Clipper fastener		
605C	A-1000614	Upper Belting	10 X 440	3Ply Texture Top w/ Clipper fastener		
605D	A-1000560	Upper Belting	4 X 450	2Ply Texture Top w/ Clipper fastener	9	F-1447
605D	A-1000672	Upper Belting	4 X 450	3Ply Texture Top w/ Clipper fastener	9	F-1447
605D	A-1000591	Upper Belting	10 X 450	2Ply Texture Top w/ Clipper fastener		
605D	A-1000615	Upper Belting	10 X 450	3Ply Texture Top w/ Clipper fastener		
605E Original	A-1000562	Upper Belting	4 X 457	2Ply Texture Top w/ Clipper fastener	5	
605E Original	A-1000674	Upper Belting	4 X 457	3Ply Texture Top w/ Clipper fastener	5	
605E Original	A-1000592	Upper Belting	10 X 457	2Ply Texture Top w/ Clipper fastener	2	
605E Original	A-1000616	Upper Belting	10 X 457	3Ply Texture Top w/ Clipper fastener	2	
605E Modified	A-1000559	Upper Belting	4 X 440	2Ply Texture Top w/ Clipper fastener	5	
605E Modified	A-1000671	Upper Belting	4 X 440	3Ply Texture Top w/ Clipper fastener	5	
605E Modified	A-1000590	Upper Belting	10 X 440	2Ply Texture Top w/ Clipper fastener	2	
605E Modified	A-1000614	Upper Belting	10 X 440	3Ply Texture Top w/ Clipper fastener	2	
605F, 605G, 605H	A-1000567	Upper Belting	4 X 512	2Ply Texture Top w/ Clipper fastener	6	1053-386-M91 & 1826-001
605F, 605G, 605H	A-1000679	Upper Belting	4 X 512	3Ply Texture Top w/ Clipper fastener	6	1053386M91, 1826001
605F, 605G, 605H	A-1000597	Upper Belting	10 X 512	2Ply Texture Top w/ Clipper fastener	2	
605F, 605G, 605H	A-1000621	Upper Belting	10 X 512	3Ply Texture Top w/ Clipper fastener	2	
(605F, 605G, 605H ALL Optional)	A-1000583	Optional Upper Belting	9 X 512	2Ply Texture Top w/ Clipper fastener	3	
(605F, 605G, 605H ALL Optional)	A-1000695	Optional Upper Belting	9 X 512	3Ply Texture Top w/ Clipper fastener	3	
604J	A-1000394	Upper Belting	6.5 X 528	2Ply Texture Top w/ Clipper fastener	6	
604J	A-1000395	Upper Belting	6.5 X 528	3Ply Texture Top w/ Clipper fastener	6	
604K	A-1000394	Upper Belting	6.5 X 528	2Ply Texture Top w/ Clipper fastener	2	
604K	A-1000395	Upper Belting	6.5 X 528	3Ply Texture Top w/ Clipper fastener	2	
604K	A-1002565	Upper Belting	14 X 528	2Ply Texture Top w/ Clipper fastener	2	
604K	A-1002566	Upper Belting	14 X 528	3Ply Texture Top w/ Clipper fastener	2	

Parts are not original equipment parts and are not sponsored, affiliated, or otherwise connected with any major brand.

Round Baler Belting

Parts are not original equipment parts and are not sponsored, affiliated, or otherwise connected with any major brand.

Vermeer						
MODELS	PART	DESCRIPTION	SIZE (INCH)	PLY/TEXTURE	# BELTS	REPLACES
604L	A-1000394	Upper Belting	6.5 X 528	2Ply Texture Top w/ Clipper fastener	2	
604L	A-1000395	Upper Belting	6.5 X 528	3Ply Texture Top w/ Clipper fastener	2	
604L	A-1002565	Upper Belting	14 X 528	2Ply Texture Top w/ Clipper fastener	2	
604L	A-1002566	Upper Belting	14 X 528	3Ply Texture Top w/ Clipper fastener	2	
605M	A-1005818	Baler Belt, Upper	7 X 522	2Ply Texture Top Clipper Lacing	3	
605M	A-1005809	Baler Belt, Upper	7 X 522	3Ply Texture Top w/ AR	3	
605M	A-1005819	Baler Belt, Upper	7 X 533	2Ply Texture Top Clipper Lacing	3	
605M	A-1005808	Baler Belt, Upper	7 X 533	3Ply Texture Top w/ AR	3	
605J	A-1000394	Upper Belting	6.5 X 528	2Ply Texture Top w/ Clipper fastener	8	
605J	A-1000395	Upper Belting	6.5 X 528	3Ply Texture Top w/ Clipper fastener	8	
605J traction roller	A-1003338	Upper Belting	6.5 X 542	2Ply Texture Top w/ Clipper fastener	8	
605J traction roller	A-1003339	Upper Belting	6.5 X 542	3Ply Texture Top w/ Clipper fastener	8	
605K	A-1000394	Upper Belting	6.5 X 528	2Ply Texture Top w/ Clipper fastener	2	
605K	A-1000395	Upper Belting	6.5 X 528	3Ply Texture Top w/ Clipper fastener	2	
605K	A-1002565	Upper Belting	14 X 528	2Ply Texture Top w/ Clipper fastener	3	
605K	A-1002566	Upper Belting	14 X 528	3Ply Texture Top w/ Clipper fastener	3	
605L	A-1000394	Upper Belting	6.5 X 528	2Ply Texture Top w/ Clipper fastener	2	
605L	A-1000395	Upper Belting	6.5 X 528	3Ply Texture Top w/ Clipper fastener	2	
605L	A-1002565	Upper Belting	14 X 528	2Ply Texture Top w/ Clipper fastener	3	
605XL	A-1002565	Upper Belting	14 X 528	2Ply Texture Top w/ Clipper fastener	3	
605XL	A-1002566	Upper Belting	14 X 528	3Ply Texture Top w/ Clipper fastener	3	
605XL	A-1000394	Upper Belting	6.5 X 528	2Ply Texture Top w/ Clipper fastener	2	
605XL	A-1000395	Upper Belting	6.5 X 528	3Ply Texture Top w/ Clipper fastener	2	
706A	A-1000566	Upper Belting	4 X 493	2Ply Texture Top w/ Clipper fastener	11	F-329
706A	A-1000678	Upper Belting	4 X 493	3Ply Texture Top w/ Clipper fastener	11	F-329
706A	A-1000596	Upper Belting	10 X 493	2Ply Texture Top w/ Clipper fastener		
706A	A-1000620	Upper Belting	10 X 493	3Ply Texture Top w/ Clipper fastener		
706C	A-1000568	Upper Belting	4 X 541	2Ply Texture Top w/ Clipper fastener	12	F-1037
706C	A-1000680	Upper Belting	4 X 541	3Ply Texture Top w/ Clipper fastener	12	F-1037
706C	A-1000598	Upper Belting	10 X 541	2Ply Texture Top w/ Clipper fastener		
706C	A-1000622	Upper Belting	10 X 541	3Ply Texture Top w/ Clipper fastener		
Vicon						
MODELS	PART	DESCRIPTION	SIZE (INCH)	PLY/TEXTURE	# BELTS	REPLACES
260	A-1005817	Upper Belting	7 x 64.5	2Ply Texture Top w/ Clipper Lacing	30	
260	A-1005816	Upper Belting	7 x 64.5	3Ply Texture Top w/ Clipper Lacing	30	
260	A-1001612	Lower Belting	7 X 104.5	2Ply Texture Top w/ Clipper fastener	6	
260	A-1001613	Lower Belting	7 X 104.5	3Ply Texture Top w/ Clipper fastener	6	
560	A-1000397	Upper Belting	11 X 73.25	2Ply Texture Top w/ Clipper fastener	25	
560	A-1000398	Upper Belting	11 X 73.25	3Ply Texture Top w/ Clipper fastener	25	
560	A-1000599	Lower Belting	11 X 121.25	2Ply Texture Top w/ Clipper fastener	5	

Round Baler Belting

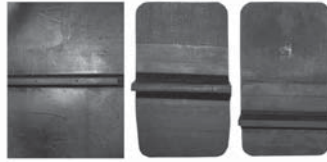
Vicon						
MODELS	PART	DESCRIPTION	SIZE (INCH)	PLY/TEXTURE	# BELTS	REPLACES
560	A-1000623	Lower Belting	11 X 121.25	3Ply Texture Top w/ Clipper fastener	5	
1200	A-1001614	Upper Belting	4 X 465	2Ply Texture Top w/ Clipper fastener	4	
1200	A-1001615	Upper Belting	4 X 465	3Ply Texture Top w/ Clipper fastener	4	
1200	A-1001616	Upper Belting	9 X 465	2Ply Texture Top w/ Clipper fastener	2	
1200	A-1001617	Upper Belting	9 X 465	3Ply Texture Top w/ Clipper fastener	2	
1201	A-1002717	Front Upper belting	6.375 X 187.8	2Ply Texture Top w/ Clipper fastener		
1201	A-1005810	Baler Belt, Upper	6.37 X 187.5	3Ply Mini Rough Top w/ Alligator Rivet		
1201	A-1005821	Baler Belt, Upper	6.37 X 205.9	2Ply Texture Top w/ Alligator Rivet		
1201	A-1005813	Baler Belt, Upper	6.37 X 205.9	3Ply Mini Rough Top w/ Alligator Rivet		
1281	A-1002719	Front Upper belting	6.375 X 211.42	2Ply Texture Top w/ Clipper fastener		
1281	A-1005814	Baler Belt, Front	6.37 X 211.5	3Ply Mini Rough Top w/ Alligator Rivet		
1281	A-1002723	Rear Upper belting	6.375 X 306.3	2Ply Texture Top w/ Clipper fastener		
1281	A-1005815	Baler Belt, Rear	6.37 X 306.3	3Ply Mini Rough Top w/ Alligator Rivet		
RP1210	A-1001610	Upper Belting	4.75 X 64.75	2Ply Texture Top w/ Clipper fastener	45	
RP1210	A-1001611	Upper Belting	4.75 X 64.75	3Ply Texture Top w/ Clipper fastener	45	
RP1210	A-1001612	Lower Belting	7 X 104.5	2Ply Texture Top w/ Clipper fastener	6	
RP1210	A-1001613	Lower Belting	7 X 104.5	3Ply Texture Top w/ Clipper fastener	6	
RP1210 Newer	A-1001618	Upper Belting	7 X 64.75	2Ply Texture Top w/ Clipper fastener	30	
RP1210 Newer	A-1001619	Upper Belting	7 X 64.75	3Ply Texture Top w/ Clipper fastener	30	
RP1211	A-1000627	Upper Belting	7.28 X 64.8	2Ply Texture Top w/ Clipper fastener	25	
RP1211	A-1002479	Upper Belting	7.28 X 64.8	3Ply Texture Top w/ Clipper fastener	25	
RP1211	A-1000631	Lower Belting	7.28 X 96.85	2Ply Texture Top w/ Clipper fastener	5	
RP1211	A-1002480	Lower Belting	7.28 X 96.85	3Ply Texture Top w/ Clipper fastener	5	
RP1510	A-1000569	Upper Belting	4.75 X 73.25	2Ply Texture Top w/ Clipper fastener	55	
RP1510	A-1000685	Upper Belting	4.75 X 73.25	3Ply Texture Top w/ Clipper fastener	55	
RP1510	A-1000599	Lower Belting	11 X 121.25	2Ply Texture Top w/ Clipper fastener	5	
RP1510	A-1000623	Lower Belting	11 X 121.25	3Ply Texture Top w/ Clipper fastener	5	
RP1510 Newer	A-1000397	Upper Belting	11 X 73.25	2Ply Texture Top w/ Clipper fastener	25	
RP1510 Newer	A-1000398	Upper Belting	11 X 73.25	3Ply Texture Top w/ Clipper fastener	25	
RP1510 Newer	A-1000599	Lower Belting	11 X 121.25	2Ply Texture Top w/ Clipper fastener	5	
RP1510 Newer	A-1000623	Lower Belting	11 X 121.25	3Ply Texture Top w/ Clipper fastener	5	
RP1511	A-1002481	Upper Belting	11 X 73.75	2Ply Texture Top w/ Clipper fastener	25	
RP1511	A-1002482	Upper Belting	11 X 73.75	3Ply Texture Top w/ Clipper fastener	25	
RP1511	A-1002483	Lower Belting	11 X 121.5	2Ply Texture Top w/ Clipper fastener	5	
RP1511	A-1002484	Lower Belting	11 X 121.5	3Ply Texture Top w/ Clipper fastener	5	
RV157	A-1005820	Baler Belt, Upper	6.37 X 187.5	3Ply Mini Rough Top w/ Alligator Rivet		
RV157	A-1005812	Baler Belt, Front	6.37 X 194	3Ply Mini Rough Top w/ Alligator Rivet		
RV157	A-1005822	Baler Belt, Rear	6.37 X 259	2Ply Texture Top W/ Clipper Lacing		
RV157	A-1005811	Baler Belt, Rear	6.37 X 259	3Ply Mini Rough Top w/ Alligator Rivet		
RV186	A-1002719	Front Upper belting	6.375 X 211.42	2Ply Texture Top w/ Clipper fastener		

Parts are not original equipment parts and are not sponsored, affiliated, or otherwise connected with any major brand.

Round Baler Belting

Vicon						
MODELS	PART	DESCRIPTION	SIZE (INCH)	PLY/TEXTURE	# BELTS	REPLACES
RV186	A-1005814	Baler Belt, Front	6.37 X 211.5	3Ply Mini Rough Top w/ Alligator Rivet		
RV186	A-1002723	Rear Upper belting	6.375 X 306.3	2Ply Texture Top w/ Clipper fastener		
RV186	A-1005815	Baler Belt, Rear	6.37 X 306.3	3Ply Mini Rough Top w/ Alligator Rivet		
RV187	A-1005821	Baler Belt, Upper	6.37 X 205.9	2Ply Texture Top w/ Alligator Rivet		
RV187	A-1005813	Baler Belt, Upper	6.37 X 205.9	3Ply Mini Rough Top w/ Alligator Rivet		
RV187	A-1002723	Rear Upper belting	6.375 X 306.3	2Ply Texture Top w/ Clipper fastener		
RV187	A-1005815	Baler Belt, Rear	6.37 X 306.3	3Ply Mini Rough Top w/ Alligator Rivet		
RV1501	A-1003797	Upper Belting	8.46 X 403.54	2Ply Texture Top w/ Clipper fastener	5	
RV1501	A-1003803	Upper Belting	8.46 X 403.54	3Ply Mini Rough Top w/ Heavy Plate	5	
RV1501	A-1003800	Optional Upper Belting	8.46 X 403.54	3Ply Mini Rough Top w/ Clipper fastener	5	
RV1601	A-1003798	Upper Belting	8.46 X 421.26	2Ply Texture Top w/ Clipper fastener	5	
RV1601	A-1003804	Upper Belting	8.46 X 421.26	3Ply Mini Rough Top w/ Heavy Plate	5	
RV1601	A-1003801	Optional Upper Belting	8.46 X 421.26	3Ply Mini Rough Top w/ Clipper fastener	5	
RV1901	A-1003799	Upper Belting	8.46 X 472.44	2Ply Texture Top w/ Clipper fastener	5	
RV1901	A-1003805	Upper Belting	8.46 X 472.44	3Ply Mini Rough Top w/ Heavy Plate	5	
RV1901	A-1003802	Optional Upper Belting	8.46 X 472.44	3Ply Mini Rough Top w/ Clipper fastener	5	

Self Propelled Swather Belting



Case-IH						
MODELS	PART	CUT	SIZE	CLEAT TYPE	REPLACES	
(820, 840, 850, 950, 955, 1140 ALL self propelled)	A-1001361	SPS Belting - 10'	40" x 85"	Rub-R-Cleat	602853-602840	
(820, 840, 850, 950, 955, 1140 ALL self propelled)	A-1001366	SPS Belting - 12'	40" x 107"	Rub-R-Cleat	FH028175-028415	
(820, 840, 850, 950, 955, 1140 ALL self propelled)	A-1000950	SPS Belting - 14'	40" x 133"	Rub-R-Cleat	67489-136072	
(820, 840, 850, 950, 955, 1140 ALL self propelled)	A-1000952	SPS Belting - 16'	40" x 157"	Rub-R-Cleat	67490-136073	
(820, 840, 850, 950, 955, 1140 ALL self propelled)	A-1001378	SPS Belting - 20'	40" x 205"	Rub-R-Cleat	FH027646-028753	
855 self propelled	A-1001352	SPS Belting - 10'	48" x 87"	Rub-R-Cleat	895322L	
855 self propelled	A-1001353	SPS Belting - 12'	48" x 108"	Rub-R-Cleat	895323L	
855 self propelled	A-1001354	SPS Belting - 14'	48" x 129"	Rub-R-Cleat	895324L	
855 self propelled	A-1000996	SPS Belting - 16'	48" x 150"	Rub-R-Cleat	895768L	
855 self propelled	A-1001355	SPS Belting - 18'	48" x 174"	Rub-R-Cleat	895247L	
855 self propelled	A-1001356	SPS Belting - 20'	48" x 198"	Rub-R-Cleat	895248L	
161 self propelled	A-1002697	SPS Belting - 12'	41.5" x 113"	Rub-R-Cleat	618-443-R93	
161 self propelled	A-1000964	SPS Belting - 16'	21' & 25'	Rub-R-Cleat	1-885474L	
163 self propelled	A-1001406	SPS Belting - 10'	41.5" x 90"	Rub-R-Cleat	613-583-R92	
163 self propelled	A-1001265	SPS Belting - 12'	41.5" x 110"	Rub-R-Cleat	613-584-R92	
163 self propelled	A-1001269	SPS Belting - 14'	41.5" x 135"	Rub-R-Cleat	613-585-R92	

Parts are not original equipment parts and are not sponsored, affiliated, or otherwise connected with any major brand.

Self Propelled Swather Belting

Case-IH						
MODELS	PART	CUT	SIZE	CLEAT TYPE	REPLACES	
163 self propelled	A-1001270	SPS Belting - 16'	41.5" x 158"	Rub-R-Cleat	613-586-R92	
(165, 201 ALL self propelled)	A-1000956	SPS Belting - 10'	41.5" x 80"	Rub-R-Cleat	829-320C91 (831-352C91)	
(165, 201 ALL self propelled)	A-1001263	SPS Belting - 12'	41.5" x 104"	Rub-R-Cleat	31-7970573, 31-7976543, 31-7976503	
(165, 201 ALL self propelled)	A-1000960	SPS Belting - 14'	41.5" x 128"	Rub-R-Cleat	597-124R95	
(165, 201 ALL self propelled)	A-1000963	SPS Belting - 16'	41.5" x 152"	Rub-R-Cleat	597-119R96	
(175, 210 ALL self propelled)	A-1000956	SPS Belting - 10.5'	41.5" x 80"	Rub-R-Cleat	829-320C91 (831-352C91)	
(175, 210 ALL self propelled)	A-1000959	SPS Belting - 13.5'	41.5" x 115"	Rub-R-Cleat	597-123-R95	
(175, 210 ALL self propelled)	A-1000963	SPS Belting - 16.5'	41.5" x 152"	Rub-R-Cleat	597-119R96	
(175, 210 ALL self propelled)	A-1000966	SPS Belting - 19.5'	41.5" x 188"	Rub-R-Cleat	597-120R96	
230 self propelled	A-1000956	SPS Belting - 10.5'	41.5" x 80"	Rub-R-Cleat	829-320C91 (831-352C91)	
230 self propelled	A-1001263	SPS Belting - 12.5'	41.5" x 104"	Rub-R-Cleat	31-7970573, 31-7976543, 31-7976503	
230 self propelled	A-1000960	SPS Belting - 14.5'	41.5" x 128"	Rub-R-Cleat	597-124R95	
230 self propelled	A-1000963	SPS Belting - 16.5'	41.5" x 152"	Rub-R-Cleat	597-119R96	
230 self propelled	A-1000966	SPS Belting - 19.5'	41.5" x 188"	Rub-R-Cleat	597-120R96	
4000 self propelled	A-1000956	SPS Belting - 12.5' L.H.	41.5" x 80"	Rub-R-Cleat	829-320C91 (831-352C91)	
5000 self propelled	A-1000956	SPS Belting - 10.5'	41.5" x 80"	Rub-R-Cleat	829-320C91 (831-352C91)	
5000 self propelled	A-1000960	SPS Belting - 12.5' R.H.	41.5" x 128"	Rub-R-Cleat	597-124R95	
5000 self propelled	A-1001263	SPS Belting - 14.5' L.H.	41.5" x 104"	Rub-R-Cleat	31-7970573, 31-7976543, 31-7976503	
5000 self propelled	A-1000963	SPS Belting - 14.5' R.H.	41.5" x 152"	Rub-R-Cleat	597-119R96	
5000 self propelled	A-1000960	SPS Belting - 16.5' L.H.	41.5" x 128"	Rub-R-Cleat	597-124R95	
5000 self propelled	A-1000965	SPS Belting - 16.5' R.H.	41.5" x 176"	Rub-R-Cleat	31-7976563, 31-7970593, 31-7976523	
(4000, 5000 ALL self propelled)	A-1000963	SPS Belting - 19.5' L.H.	41.5" x 152"	Rub-R-Cleat	597-119R96	
(4000, 5000 ALL self propelled)	A-1001279	SPS Belting - 19.5' R.H.	50' L.H. Front	Rub-R-Cleat	1063485M91	
(4000, 5000 ALL self propelled)	A-1001275	SPS Belting - 24.5' L.H.	41.5" x 206"	Rub-R-Cleat	070-18683	
(4000, 5000 ALL self propelled)	A-1001285	SPS Belting - 24.5' R.H.	41.5" x 278"	Rub-R-Cleat	830-061C91 (831-359C91)	
4000 self propelled, 1979 >	A-1001263	SPS Belting - 12.5'	41.5" x 104"	Rub-R-Cleat	31-7970573, 31-7976543, 31-7976503	
4000 self propelled, 1979 >	A-1000960	SPS Belting - 14.5'	41.5" x 128"	Rub-R-Cleat	597-124R95	
4000 self propelled, 1979 >	A-1000963	SPS Belting - 16.5'	41.5" x 152"	Rub-R-Cleat	597-119R96	
4000 self propelled, 1979 >	A-1000966	SPS Belting - 19.5'	41.5" x 188"	Rub-R-Cleat	597-120R96	
4000 self propelled, 1979 >	A-1001282	SPS Belting - 24.5'	41.5" x 242"	Rub-R-Cleat	832-190C91	
(6000, 6500 ALL self propelled)	A-1001271	SPS Belting - 21' Dbl. Swath	41.5" x 184.5"	Rub-R-Cleat	1057-752M91	
(6000, 6500 ALL self propelled)	A-1001281	SPS Belting - 25' Dbl. Swath	41.5" x 229"	Rub-R-Cleat	K-22686-2	
(6000, 6500 ALL self propelled)	A-1001286	SPS Belting - 30' D.S.	41.5" x 283.5"	Rub-R-Cleat	1057-919M91	
(6000, 6500 ALL self propelled)	A-1001292	SPS Belting - 36' L.H.	41.5" x 311"	Rub-R-Cleat	1069-541M91	
(6000, 6500 ALL self propelled)	A-1001293	SPS Belting - 36' R.H.	41.5" x 374.4"	Rub-R-Cleat	1069-540M91	
(6000, 6500 ALL self propelled)	A-1001260	SPS Belting - 21', 25', 30' Ctr Deck Ext	41.5" x 51"	Rub-R-Cleat	K-22685-2	

Parts are not original equipment parts and are not sponsored, affiliated, or otherwise connected with any major brand.

Self Propelled Swather Belting

Case-IH					
MODELS	PART	CUT	SIZE	CLEAT TYPE	REPLACES
8830 self propelled	A-1001310	SPS Belting - 15'	42" x 135"	Rub-R-Cleat, recessed	1700160
8830 self propelled	A-1000980	SPS Belting - 18'	42" x 166"	Rub-R-Cleat, recessed	1700087
8830 self propelled	A-1001318	SPS Belting - 21'	42" x 202"	Rub-R-Cleat, recessed	1700103
8840 self propelled, Double Windrow Att.	A-1002165	SPS Belting - 2-Ply Laced	8" x 87"	no cleats	Belt Conveyor
8840 self propelled, Double Windrow Att.	A-1002705	SPS Belting - Draper Laced	44" x 200"	Rub-R-Cleat/ recessed	
175 self propelled, Self Cleaning Platform	A-1001360	SPS Belting - 10.5'	40" x 80"	Rub-R-Cleat	597-125R95
175 self propelled, Self Cleaning Platform	A-1001370	SPS Belting - 13.5'	40" x 115"	Rub-R-Cleat	597-127R94
(201, 210, 230 ALL self propelled, Self Cleaning Platform)	A-1001360	SPS Belting - 10'	40" x 80"	Rub-R-Cleat	597-125R95
(201, 210, 230 ALL self propelled, Self Cleaning Platform)	A-1001365	SPS Belting - 12'	40" x 104"	Rub-R-Cleat	597-126R95
(201, 210, 230 ALL self propelled, Self Cleaning Platform)	A-1001372	SPS Belting - 14'	40" x 128"	Rub-R-Cleat	597-128R95
(201, 210, 230 ALL self propelled, Self Cleaning Platform)	A-1001376	SPS Belting - 16'	40" x 152"	Rub-R-Cleat	597-129R95
(201, 210, 230 ALL self propelled, Self Cleaning Platform)	A-1001100	SPS Belting - 16'	40" x 152"	Wood Cleat	597-129R95
8820 self propelled, SN CFH-0050001 - CFH-0050295	A-1002945	SPS Belting - 21'	42" x 200.43"	Rub-R-Cleat, recessed	700710180
8820 self propelled, SN CFH-0050001 - CFH-0050295	A-1002946	SPS Belting - 25' R.H.	42" x 208.43"	Rub-R-Cleat, recessed	700710182
8820 self propelled, SN CFH-0050001 - CFH-0050295	A-1002949	SPS Belting - 25' L.H.	42" x 248.43"	Rub-R-Cleat, recessed	700710181
8820 self propelled, SN CFH-0050001 - CFH-0050295	A-1002950	SPS Belting - 30' R.H.	42" x 262.43"	Rub-R-Cleat, recessed	700710184
8820 self propelled, SN CFH-0050001 - CFH-0050295	A-1002953	SPS Belting - 30' L.H.	42" x 302.43"	Rub-R-Cleat, recessed	700710183
8820 self propelled, SN CFH-0050001 - CFH-0050295	A-1002699	SPS Belting - 25' & 30'	42" x 38.86"	Rub-R-Cleat, recessed	700711197
8820 self propelled, SN CFH-0050296 >	A-1002958	SPS Belting - 21'	42" x 198.88"	Rub-R-Cleat	700712985
8820 self propelled, SN CFH-0050296 >	A-1002959	SPS Belting - 25' R.H.	42" x 206.88"	Rub-R-Cleat	700712987
8820 self propelled, SN CFH-0050296 >	A-1002962	SPS Belting - 25' L.H.	42" X 246.88"	Rub-R-Cleat	700712986
8820 self propelled, SN CFH-0050296 >	A-1002963	SPS Belting - 30' R.H.	42" x 260.87"	Rub-R-Cleat	700712989
8820 self propelled, SN CFH-0050296 >	A-1002966	SPS Belting - 30' L.H.	42" x 300.87"	Rub-R-Cleat	700712988
8820 self propelled, SN CFH-0050296 >	A-1002956	SPS Belting - 25' & 30'	42" x 38.86"	Rub-R-Cleat	700712990

Parts are not original equipment parts and are not sponsored, affiliated, or otherwise connected with any major brand.

Self Propelled Swather Belting

Parts are not original equipment parts and are not sponsored, affiliated, or otherwise connected with any major brand.

CCIL					
MODELS	PART	CUT	SIZE	CLEAT TYPE	REPLACES
(500, 550 ALL self propelled)	A-1001233	SPS Belting - 12'	41" x 109"	Rub-R-Cleat	01-3149-(01-1020)
(500, 550 ALL self propelled)	A-1001235	SPS Belting - 15'	41" x 142"	Rub-R-Cleat	01-3159-(01-2760)
(500, 550 ALL self propelled)	A-1001237	SPS Belting - 18'	41" x 178"	Rub-R-Cleat	01-3160 (01-2761)
(500, 550 ALL self propelled)	A-1001242	SPS Belting - 21'	41" x 214"	Rub-R-Cleat	01-11316 (01-18894)
(500, 550 ALL self propelled)	A-1001245	SPS Belting - 26'	26' RH & LH	Rub-R-Cleat	32933
501 self propelled	A-1001230	SPS Belting - 30' Ext	41" x 42.5"	Rub-R-Cleat	01-3191 (01-3158)
501 self propelled	A-1001248	SPS Belting - 30'	41" x 278"	Rub-R-Cleat	01-3192 (01-2615)
742 HYDRAFLEX self propelled	A-1001231	SPS Belting - 42' Ext	41" x 47.4"	Rub-R-Cleat	01-35692
742 HYDRAFLEX self propelled	A-1001250	SPS Belting - 42'	41" x 427.1"	Rub-R-Cleat	01-37563

Cereal Implements					
MODELS	PART	CUT	SIZE	CLEAT TYPE	REPLACES
722 self propelled	A-1001253	SPS Belting - 6.5' Deck	41" x 167.4"	Rub-R-Cleat	45906
722 self propelled	A-1001254	SPS Belting - 7' Deck	41" x 182.3"	Rub-R-Cleat	45907
722 self propelled	A-1001255	SPS Belting - 9' Deck	41" x 230.3"	Rub-R-Cleat	45908
722 self propelled	A-1001256	SPS Belting - 11' Deck	41" x 278.3"	Rub-R-Cleat	45909
722 self propelled	A-1001257	SPS Belting - 13' Deck	41" x 327.2"	Rub-R-Cleat	45910
722 self propelled	A-1002983	SPS Belting - 15' Deck	41" x 375.3"	Rub-R-Cleat	45911
722 self propelled	A-1001252	SPS Belting - 2' Ext.	41" x 47.8"	Rub-R-Cleat	45912

Cockshutt					
MODELS	PART	CUT	SIZE	CLEAT TYPE	REPLACES
423 self propelled	A-1000987	SPS Belting - 10'	44" x 88"	Rub-R-Cleat	070-10834
423 self propelled	A-1001343	SPS Belting - 12'	44" x 112"	Rub-R-Cleat	028456 (7000054963)
423 self propelled	A-1001345	SPS Belting - 14'	44" x 133"	Rub-R-Cleat	28464
423 self propelled	A-1001348	SPS Belting - 16'	44" x 157"	Rub-R-Cleat	28472
(502, 503, 504 ALL self propelled)	A-1001352	SPS Belting - 10'	48" x 87"	Rub-R-Cleat	895322L
(502, 503, 504 ALL self propelled)	A-1001353	SPS Belting - 12'	48" x 108"	Rub-R-Cleat	895323L
(502, 503, 504 ALL self propelled)	A-1001354	SPS Belting - 14'	48" x 129"	Rub-R-Cleat	895324L
(502, 503, 504 ALL self propelled)	A-1000996	SPS Belting - 16'	48" x 150"	Rub-R-Cleat	895768L
(502, 503, 504 ALL self propelled)	A-1001355	SPS Belting - 18'	48" x 174"	Rub-R-Cleat	895247L
(502, 503, 504 ALL self propelled)	A-1001356	SPS Belting - 20'	48" x 198"	Rub-R-Cleat	895248L

Ford / New Holland					
MODELS	PART	CUT	SIZE	CLEAT TYPE	REPLACES
SEVERAL self propelled	A-1001353	SPS Belting - 12'	48" x 108"	Rub-R-Cleat	
SEVERAL self propelled	A-1001354	SPS Belting - 14'	48" x 129"	Rub-R-Cleat	
SEVERAL self propelled	A-1000996	SPS Belting - 16'	48" x 150"	Rub-R-Cleat	
SEVERAL self propelled	A-1001355	SPS Belting - 18'	48" x 174"	Rub-R-Cleat	
SEVERAL self propelled	A-1001356	SPS Belting - 20'	48" x 198"	Rub-R-Cleat	
(900, 901 ALL self propelled)	A-1001361	SPS Belting - 10'	40" x 85"	Rub-R-Cleat	602853-602840
(900, 901 ALL self propelled)	A-1000948	SPS Belting - 12'	40" x 110"	Rub-R-Cleat	67488-136071
(900, 901 ALL self propelled)	A-1000950	SPS Belting - 14'	40" x 133"	Rub-R-Cleat	67489-136072

Self Propelled Swather Belting

Parts are not original equipment parts and are not sponsored, affiliated, or otherwise connected with any major brand.

Ford / New Holland					
MODELS	PART	CUT	SIZE	CLEAT TYPE	REPLACES
(900, 901 ALL self propelled)	A-1000952	SPS Belting - 16'	40" x 157"	Rub-R-Cleat	67490-136073
(903, 1100, 1112 ALL self propelled)	A-1001359	SPS Belting - 10'	40" x 78"	Rub-R-Cleat	67487-136070
(903, 1100, 1112 ALL self propelled)	A-1001364	SPS Belting - 12'	40" x 102"	Rub-R-Cleat	137958-143135
(903, 1100, 1112 ALL self propelled)	A-1001371	SPS Belting - 14'	40" x 126"	Rub-R-Cleat	137959-143136
(903, 1100, 1112 ALL self propelled)	A-1001375	SPS Belting - 16'	40" x 150"	Rub-R-Cleat	143114-143137
905 self propelled	A-1001359	SPS Belting - 10'	40" x 78"	Rub-R-Cleat	67487-136070
905 self propelled	A-1000948	SPS Belting - 12'	40" x 110"	Rub-R-Cleat	67488-136071
905 self propelled	A-1000950	SPS Belting - 14'	40" x 133"	Rub-R-Cleat	67489-136072
905 self propelled	A-1000952	SPS Belting - 16'	40" x 157"	Rub-R-Cleat	67490-136073
1090 self propelled	A-1001263	SPS Belting - 12'	41.5" x 104"	Rub-R-Cleat	31-7970573, 31-7976543, 31-7976503
1090 self propelled	A-1000962	SPS Belting - 15'	41.5" x 140"	Rub-R-Cleat	31-7970583, 31-7976553, 31-7976513
1090 self propelled	A-1000965	SPS Belting - 18'	41.5" x 176"	Rub-R-Cleat	31-7976563, 31-7970593, 31-7976523
1090 self propelled	A-1001277	SPS Belting - 21'	41.5" x 212"	Rub-R-Cleat	31-7970603, 31-7976573, 31-7976533
1090 self propelled, w/ dbl swath	A-1001260	SPS Belting - 25' DS	41.5" x 51"	Rub-R-Cleat	K-22685-2
1090 self propelled, w/ dbl swath	A-1001281	SPS Belting - 25' DS	41.5" x 229"	Rub-R-Cleat	K-22686-2
(1100, 1116, 1495 ALL self propelled, w/ Optional Draper Header)	A-1001296	SPS Belting - Extension	42" x 41.5"	Rub-R-Cleat	771940-771939
(1100, 1116, 1495 ALL self propelled, w/ Optional Draper Header)	A-1000978	SPS Belting - 15'	42" x 138"	Rub-R-Cleat	0000-1386
(1100, 1116, 1495 ALL self propelled, w/ Optional Draper Header)	A-1000981	SPS Belting - 18'	42" x 174"	Rub-R-Cleat	0000-1387
(1100, 1116, 1495 ALL self propelled, w/ Optional Draper Header)	A-1001316	SPS Belting - 21'	42" x 190.5"	Rub-R-Cleat	685931-685929
Hesston					
MODELS	PART	CUT	SIZE	CLEAT TYPE	REPLACES
SEVERAL self propelled, < 1974	A-1000987	SPS Belting - 10'	44" x 88"	Rub-R-Cleat	070-10834
SEVERAL self propelled, < 1974	A-1001343	SPS Belting - 12'	44" x 112"	Rub-R-Cleat	028456 (7000054963)
SEVERAL self propelled, < 1974	A-1001345	SPS Belting - 14'	44" x 133"	Rub-R-Cleat	28464
SEVERAL self propelled, < 1974	A-1001348	SPS Belting - 16'	44" x 157"	Rub-R-Cleat	28472
SEVERAL self propelled, < 1974	A-1001351	SPS Belting - 18'	44" x 336"	Rub-R-Cleat	28652
SEVERAL self propelled, grain heads w/ shifting plat. & dbl att.	A-1001349	SPS Belting - 18'	44" x 192"	Rub-R-Cleat, recessed	728105
SEVERAL self propelled, grain heads w/ shifting plat. & dbl att.	A-1001418	SPS Belting - 18'	44" x 203"	Rub-R-Cleat, recessed	828038
SEVERAL self propelled, grain heads w/ shifting plat. & dbl att.	A-1001982	SPS Belting - 18'	44" x 189"	Rub-R-Cleat, recessed	828343
(420G, 520G ALL self propelled)	A-1001345	SPS Belting - 14' R.H.	44" x 133"	Rub-R-Cleat	28464
(420G, 520G ALL self propelled)	A-1001417	SPS Belting - 14' L.H.	44" x 115"	Rub-R-Cleat	728378
(420G, 520G ALL self propelled)	A-1001348	SPS Belting - 16' R.H.	44" x 157"	Rub-R-Cleat	28472
(420G, 520G ALL self propelled)	A-1000991	SPS Belting - 16' L.H.	44" x 139"	Rub-R-Cleat	728394
(420G, 520G ALL self propelled)	A-1001350	SPS Belting - 20' R.H.	44" x 205"	Rub-R-Cleat	728410

Self Propelled Swather Belting

Parts are not original equipment parts and are not sponsored, affiliated, or otherwise connected with any major brand.

Hesston						
MODELS	PART	CUT	SIZE	CLEAT TYPE	REPLACES	
(420G, 520G ALL self propelled)	A-1000993	SPS Belting - 20' L.H.	44" x 187"	Rub-R-Cleat	070-18012	
(6400, 6405, 6450, 6455, 6550, 6555, 6600, 6650, 6655 ALL self propelled)	A-1001304	SPS Belting - 12'	42" x 100"	Rub-R-Cleat, recessed	0828277 (1700152)	
(6400, 6405, 6450, 6455, 6550, 6555, 6600, 6650, 6655 ALL self propelled)	A-1001310	SPS Belting - 15'	42" x 135"	Rub-R-Cleat, recessed	1700160	
(6400, 6405, 6450, 6455, 6550, 6555, 6600, 6650, 6655 ALL self propelled)	A-1000980	SPS Belting - 18'	42" x 166"	Rub-R-Cleat, recessed	1700087	
(6400, 6405, 6450, 6455, 6550, 6555, 6600, 6650, 6655 ALL self propelled)	A-1001318	SPS Belting - 21'	42" x 202"	Rub-R-Cleat, recessed	1700103	
(6600, 6610 ALL self propelled, w/ dbl swath att.)	A-1002729	SPS Belting -	44" x 215"	Rub-R-Cleat, recessed		
8100 self propelled, < 1992	A-1002704	SPS Belting - 21'	42" x 201.25"	Rub-R-Cleat, recessed		
8100 self propelled, < 1992	A-1002703	SPS Belting - 25' Center	42" x 207.25"	Rub-R-Cleat, recessed		
8100 self propelled, < 1992	A-1002702	SPS Belting - 25' L.H.	42" x 247.25"	Rub-R-Cleat, recessed		
8100 self propelled, < 1992	A-1002701	SPS Belting - 30' Center	42" x 261.25"	Rub-R-Cleat, recessed		
8100 self propelled, < 1992	A-1002700	SPS Belting - 30' L.H.	42" x 301.25"	Rub-R-Cleat, recessed		
8100 self propelled, < 1992	A-1002699	SPS Belting - 25' & 30' R.H.	42" x 38.86"	Rub-R-Cleat, recessed		
8100 self propelled, 1993 >	A-1002958	SPS Belting - 21'	42" x 198.88"	Rub-R-Cleat	700712985	
8100 self propelled, 1993 >	A-1002959	SPS Belting - 25' R.H.	42" x 206.88"	Rub-R-Cleat	700712987	
8100 self propelled, 1993 >	A-1002962	SPS Belting - 25' L.H.	42" x 246.88"	Rub-R-Cleat	700712986	
8100 self propelled, 1993 >	A-1002963	SPS Belting - 30' R.H.	42" x 260.87"	Rub-R-Cleat	700712989	
8100 self propelled, 1993 >	A-1002966	SPS Belting - 30' L.H.	42" x 300.87"	Rub-R-Cleat	700712988	
8100 self propelled, 1993 >	A-1002956	SPS Belting - 25' & 30'	42" x 38.86"	Rub-R-Cleat	700712990	
8200 self propelled	A-1001310	SPS Belting - 15'	42" x 135"	Rub-R-Cleat, recessed	1700160	
8200 self propelled	A-1000980	SPS Belting - 18'	42" x 166"	Rub-R-Cleat, recessed	1700087	
8200 self propelled	A-1001318	SPS Belting - 21'	42" x 202"	Rub-R-Cleat, recessed	1700103	
8400 self propelled	A-1002165	SPS Belting - 2-Ply Laced	8" x 87"	no cleats	Belt Conveyor	
8400 self propelled	A-1002705	SPS Belting - Draper Laced	44" x 200"	Rub-R-Cleat/recessed		

John Deere						
MODELS	PART	CUT	SIZE	CLEAT TYPE	REPLACES	
(200, 200A ALL self propelled)	A-1001299	SPS Belting - 10'	42" x 82"	Rub-R-Cleat	AH11237H	
(200, 200A ALL self propelled)	A-1001305	SPS Belting - 12'	42" x 107"	Rub-R-Cleat	AE36829	
(200, 200A ALL self propelled)	A-1001307	SPS Belting - 14'	42" x 131"	Rub-R-Cleat	AP26509H	
(200, 200A ALL self propelled)	A-1001315	SPS Belting - 16' R.H.	42" x 179"	Rub-R-Cleat	AH11235H	
(200, 200A ALL self propelled)	A-1001307	SPS Belting - 16' L.H.	42" x 131"	Rub-R-Cleat	AP26509H	
(215, 215A ALL self propelled)	A-1001300	SPS Belting - 10'	42" x 86"	Rub-R-Cleat	AH18490H	

Self Propelled Swather Belting

John Deere						
MODELS	PART	CUT	SIZE	CLEAT TYPE	REPLACES	
(880, 88 ALL self propelled)	A-1000975	SPS Belting - 12'	42" x 110"	Rub-R-Cleat	AH18491H	
(880, 88 ALL self propelled)	A-1001308	SPS Belting - 14'	41.88" x 134"	Rub-R-Cleat	070-18680	
(880, 88 ALL self propelled)	A-1001312	SPS Belting - 16'	42" x 158"	Rub-R-Cleat	AH18493H	
(78, 780 ALL self propelled)	A-1001302	SPS Belting - 11'	Ext. 3'	Rub-R-Cleat	070-18673	
(78, 780 ALL self propelled)	A-1000978	SPS Belting - 15'	42" x 138"	Rub-R-Cleat	0000-1386	
(78, 780 ALL self propelled)	A-1000981	SPS Belting - 18'	42" x 174"	Rub-R-Cleat	0000-1387	
(78, 780 ALL self propelled)	A-1000984	SPS Belting - 21'	42" x 210"	Rub-R-Cleat	000-52911	
(800, 830 ALL self propelled, w/ twin Swath)	A-1000975	SPS Belting - 12'	42" x 110"	Rub-R-Cleat	AH18491H	
(800, 830 ALL self propelled, w/ twin Swath)	A-1000978	SPS Belting - 15'	42" x 138"	Rub-R-Cleat	0000-1386	
(800, 830 ALL self propelled, w/ twin Swath)	A-1000981	SPS Belting - 18'	42" x 174"	Rub-R-Cleat	0000-1387	
(800, 830 ALL self propelled, w/ twin Swath)	A-1000984	SPS Belting - 21'	42" x 210"	Rub-R-Cleat	000-52911	
(278, 288 ALL self propelled, w/ Shifting Platform)	A-1001331	SPS Belting -	42" x 300"	Rub-R-Cleat	AE24846	
(278, 288 ALL self propelled, w/ Shifting Platform)	A-1000971	SPS Belting -	42" x 47"	Rub-R-Cleat	AE38276	
(78, 780, 800, 2250, 2270, 2320, 2420 ALL self propelled, 1978 >)	A-1001305	SPS Belting - 12'	42" x 107"	Rub-R-Cleat	AE36829	
(78, 780, 800, 2250, 2270, 2320, 2420 ALL self propelled, 1978 >)	A-1000978	SPS Belting - 15'	42" x 138"	Rub-R-Cleat	0000-1386	
(78, 780, 800, 2250, 2270, 2320, 2420 ALL self propelled, 1978 >)	A-1000981	SPS Belting - 18'	42" x 174"	Rub-R-Cleat	0000-1387	
(78, 780, 800, 2250, 2270, 2320, 2420 ALL self propelled, 1978 >)	A-1000984	SPS Belting - 21'	42" x 210"	Rub-R-Cleat	000-52911	
(78, 780, 800, 2250, 2270, 2320, 2420 ALL self propelled, 1978 >)	A-1001327	SPS Belting - 25'	42" x 258"	Rub-R-Cleat	AE36834	
(78, 780, 800, 2250, 2270, 2320, 2420 ALL self propelled, 1978 >)	A-1001333	SPS Belting - 30'	42" x 310"	Rub-R-Cleat	AE6835	
(78, 780, 800, 2250, 2270, 2320, 2420 ALL self propelled, 1978 >)	A-1001336	SPS Belting - 36'	42" x 377"	Rub-R-Cleat	AE33360	
(2320, 2280 ALL self propelled, w/ 130 Platform)	A-1000971	SPS Belting - 21' TS	42" x 47"	Rub-R-Cleat	AE38276	
(2320, 2280 ALL self propelled, w/ 130 Platform)	A-1000982	SPS Belting - 21' TS	42" x 186"	Rub-R-Cleat	0000-41705	
(2320, 2280 ALL self propelled, w/ 130 Platform)	A-1000984	SPS Belting - 21' Ctr Delivery	42" x 210"	Rub-R-Cleat	000-52911	
2360 self propelled, w/ 160 Platform	A-1000962	SPS Belting - 15'	41.5" x 140"	Rub-R-Cleat		
2360 self propelled, w/ 160 Platform	A-1000965	SPS Belting - 18'	41.5" x 176"	Rub-R-Cleat	31-7976563, 31-7970593, 31-7976523	
2360 self propelled, w/ 160 Platform	A-1001271	SPS Belting - 21'	41.5" x 184.5"	Rub-R-Cleat	1057-752M91	
2360 self propelled, w/ 160 Platform	A-1001281	SPS Belting - 25'	41.5" x 229"	Rub-R-Cleat	K-22686-2	
2360 self propelled, w/ 160 Platform	A-1001286	SPS Belting - 30'	41.5" x 283.5"	Rub-R-Cleat	1057-919M91	
SEVERAL self propelled, w/ 160 Platform	A-1001260	SPS Belting - Short Deck w/twin windrowers	41.5" x 51"	Rub-R-Cleat	K-22685-2	
(215A, 880, 118, 800, 830, 2250, 2270 ALL self propelled, w/ narrow platform)	A-1001362	SPS Belting - 10'	40" x 86"	recessed cleats	AE20966	
(215A, 880, 118, 800, 830, 2250, 2270 ALL self propelled, w/ narrow platform)	A-1001367	SPS Belting - 12'	40" x 110"	recessed cleats	AE20967	
(215A, 880, 118, 800, 830, 2250, 2270 ALL self propelled, w/ narrow platform)	A-1001373	SPS Belting - 14'	40" x 134"	recessed cleats	AE20968	

Parts are not original equipment parts and are not sponsored, affiliated, or otherwise connected with any major brand.

Self Propelled Swather Belting

John Deere					
MODELS	PART	CUT	SIZE	CLEAT TYPE	REPLACES
(215A, 880, 118, 800, 830, 2250, 2270 ALL self propelled, w/ narrow platform)	A-1001377	SPS Belting - 16'	40" x 157"	recessed cleats	AE20969
(78, 780 ALL self propelled, w/ narrow platform)	A-1001358	SPS Belting - 9'	40" x 73"	recessed cleats	AE25972
(78, 780 ALL self propelled, w/ narrow platform)	A-1001363	SPS Belting - 11'	40" x 97"	recessed cleats	AE23714
(78, 780, 800, 2250, 2270, 2280 ALL self propelled, w/ 130, 135 platform, 1978 >)	A-1002732	SPS Belting - 12'	40" x 108"	recessed cleats	AE37043
(78, 780, 800, 2250, 2270, 2280 ALL self propelled, w/ 130, 135 platform, 1978 >)	A-1001374	SPS Belting - 15'	40" x 138"	recessed cleats	AE34797
Massey Ferguson					
MODELS	PART	CUT	SIZE	CLEAT TYPE	REPLACES
20 self propelled	A-1001352	SPS Belting - 10'	48" x 87"	Rub-R-Cleat	895322L
20 self propelled	A-1001353	SPS Belting - 12'	48" x 108"	Rub-R-Cleat	895323L
20 self propelled	A-1001354	SPS Belting - 14'	48" x 129"	Rub-R-Cleat	895324L
20 self propelled	A-1000996	SPS Belting - 16'	48" x 150"	Rub-R-Cleat	895768L
(34, 36, 44 ALL self propelled)	A-1000953	SPS Belting - 10'	40.75" x 86"	Rub-R-Cleat	143116M91
(34, 36, 44 ALL self propelled)	A-1000958	SPS Belting - 12'	40.75" x 104"	Rub-R-Cleat	143117M91
(34, 36, 44 ALL self propelled)	A-1001234	SPS Belting - 14'	40.75" x 122"	Rub-R-Cleat	143118M91
(34, 36, 44 ALL self propelled)	A-1000954	SPS Belting - 16'	40.75" x 146"	Rub-R-Cleat	143119M91
(34, 36, 44 ALL self propelled)	A-1001236	SPS Belting - 18'	40.75" x 170"	Rub-R-Cleat	144509M91
(655, 775, 785 ALL self propelled)	A-1001263	SPS Belting - 12'	41.5" x 104"	Rub-R-Cleat	31-7970573, 31-7976543, 31-7976503
(655, 775, 785 ALL self propelled)	A-1000962	SPS Belting - 15'	41.5" x 140"	Rub-R-Cleat	31-7970583, 31-7976553, 31-7976513
(655, 775, 785 ALL self propelled)	A-1000965	SPS Belting - 18'	41.5" x 176"	Rub-R-Cleat	31-7976563, 31-7970593, 31-7976523
(655, 775, 785 ALL self propelled)	A-1001277	SPS Belting - 21'	41.5" x 212"	Rub-R-Cleat	31-7970603, 31-7976573, 31-7976533
885 self propelled, w/ center delivery	A-1000955	SPS Belting - 12'	3' Extension	Rub-R-Cleat	K22921
885 self propelled, w/ center delivery	A-1000962	SPS Belting - 15'	41.5" x 140"	Rub-R-Cleat	31-7970583, 31-7976553, 31-7976513
885 self propelled, w/ center delivery	A-1000965	SPS Belting - 18'	41.5" x 176"	Rub-R-Cleat	31-7976563, 31-7970593, 31-7976523
885 self propelled, w/ double delivery	A-1001260	SPS Belting-21',22',25',30'	41.5" x 51"	Rub-R-Cleat	K-22685-2
885 self propelled, w/ double delivery	A-1001271	SPS Belting - 21' Platform	41.5" x 184.5"	Rub-R-Cleat	1057-752M91
885 self propelled, w/ double delivery	A-1001281	SPS Belting - 25' Platform	41.5" x 229"	Rub-R-Cleat	K-22686-2
885 self propelled, w/ double delivery	A-1001286	SPS Belting - 30' Platform	41.5" x 283.5"	Rub-R-Cleat	1057-919M91
885 self propelled, w/ double delivery	A-1001291	SPS Belting - 36' Platform	41.5" x 45.7"	Rub-R-Cleat	1069-542M91
885 self propelled, w/ double delivery	A-1001292	SPS Belting - 36' Platform	41.5" x 311"	Rub-R-Cleat	1069-541M91
885 self propelled, w/ double delivery	A-1001293	SPS Belting - 36' Platform	41.5" x 374.4"	Rub-R-Cleat	1069-540M91

Parts are not original equipment parts and are not sponsored, affiliated, or otherwise connected with any major brand.

Self Propelled Swather Belting

Parts are not original equipment parts and are not sponsored, affiliated, or otherwise connected with any major brand.

Owattona					
MODELS	PART	CUT	SIZE	CLEAT TYPE	REPLACES
(D, S, 20, 29, 30, 80 ALL self propelled, < 1960)	A-1001337	SPS Belting - 8'	44" x 63"	Rub-R-Cleat	070-13956
(D, S, 20, 29, 30, 80 ALL self propelled, < 1960)	A-1001340	SPS Belting - 10'	44" x 82"	Rub-R-Cleat	070-13957
(D, S, 20, 29, 30, 80 ALL self propelled, < 1960)	A-1001341	SPS Belting - 12'	44" x 100"	Rub-R-Cleat	070-14652
(D, S, 20, 29, 30, 80 ALL self propelled, < 1960)	A-1001344	SPS Belting - 14'	44" x 122"	Rub-R-Cleat	070-14653
(D, S, 20, 29, 30, 80 ALL self propelled, < 1960)	A-1001346	SPS Belting - 16'	44" x 146"	Rub-R-Cleat	070-14654
(25, 29, 30, 35, 80, 81, 270, 250, 350, 700 ALL self propelled, 1961 >)	A-1001338	SPS Belting - 8'	44" x 66"	Rub-R-Cleat	070-14788
(25, 29, 30, 35, 80, 81, 270, 250, 350, 700 ALL self propelled, 1961 >)	A-1000987	SPS Belting - 10'	44" x 88"	Rub-R-Cleat	070-10834
(25, 29, 30, 35, 80, 81, 270, 250, 350, 700 ALL self propelled, 1961 >)	A-1002567	SPS Belting - 12'	44" x 107"	Rub-R-Cleat	070-10835
(25, 29, 30, 35, 80, 81, 270, 250, 350, 700 ALL self propelled, 1961 >)	A-1000990	SPS Belting - 14'	44" x 128"	Rub-R-Cleat	070-18669
(25, 29, 30, 35, 80, 81, 270, 250, 350, 700 ALL self propelled, 1961 >)	A-1001347	SPS Belting - 16'	44" x 152"	Rub-R-Cleat	070-18670
(25, 29, 30, 35, 80, 81, 270, 250, 350, 700 ALL self propelled, 1961 >)	A-1000993	SPS Belting - 19'	44" x 187"	Rub-R-Cleat	070-18012
(260, 280 ALL self propelled)	A-1001339	SPS Belting - 10.5'	44" x 80"	Rub-R-Cleat	070-18667
(260, 280 ALL self propelled)	A-1001342	SPS Belting - 12.5'	44" x 104"	Rub-R-Cleat	070-18668
(260, 280 ALL self propelled)	A-1000990	SPS Belting - 14.5'	44" x 128"	Rub-R-Cleat	070-18669
(260, 280 ALL self propelled)	A-1001347	SPS Belting - 16.5'	44" x 152"	Rub-R-Cleat	070-18670
(260, 280 ALL self propelled)	A-1000994	SPS Belting - 20.5'	44" x 200"	Rub-R-Cleat	070-18671
262 self propelled	A-1001415	SPS Belting - 12.5'	41.88" x 200"	Rub-R-Cleat	070-18682
281 self propelled	A-1001303	SPS Belting - 12.5'	41.88" x 98"	Rub-R-Cleat	070-18682
281 self propelled	A-1001308	SPS Belting - 15.5'	41.88" x 134"	Rub-R-Cleat	070-18680
281 self propelled	A-1001314	SPS Belting - 18.5'	41.88" x 170"	Rub-R-Cleat	070-18681
281 self propelled	A-1001275	SPS Belting - 21.5'	41.5" x 206"	Rub-R-Cleat	070-18683
Renn					
MODELS	PART	CUT	SIZE	CLEAT TYPE	REPLACES
2000 self propelled	A-1001263	SPS Belting - 12'	41.5" x 104"	Rub-R-Cleat	31-7970573, 31-7976543, 31-7976503
2000 self propelled	A-1000962	SPS Belting - 15'	41.5" x 140"	Rub-R-Cleat	31-7970583, 31-7976553, 31-7976513
2000 self propelled	A-1000965	SPS Belting - 18'	41.5" x 176"	Rub-R-Cleat	31-7976563, 31-7970593, 31-7976523
2000 self propelled	A-1001277	SPS Belting - 21'	41.5" x 212"	Rub-R-Cleat	31-7970603, 31-7976573, 31-7976533
2000 self propelled, w/ dbl swath	A-1001260	SPS Belting - 25'	41.5" x 51"	Rub-R-Cleat	K-22685-2
2000 self propelled, w/ dbl swath	A-1001281	SPS Belting - 25'	41.5" x 229"	Rub-R-Cleat	K-22686-2
Versatile					
MODELS	PART	CUT	SIZE	CLEAT TYPE	REPLACES
(103, 330 ALL self propelled)	A-1000972	SPS Belting - 10'	Platform	Rub-R-Cleat	AW11644W
400 self propelled	A-1000973	SPS Belting - 12'	42" x 102"	Rub-R-Cleat	0000-1385
400 self propelled	A-1000978	SPS Belting - 15'	42" x 138"	Rub-R-Cleat	0000-1386

Self Propelled Swather Belting

Parts are not original equipment parts and are not sponsored, affiliated, or otherwise connected with any major brand.

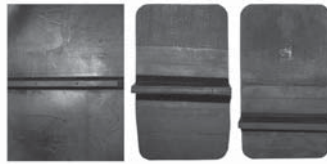
Versatile					
MODELS	PART	CUT	SIZE	CLEAT TYPE	REPLACES
400 self propelled	A-1000981	SPS Belting - 18'	42" x 174"	Rub-R-Cleat	0000-1387
400 self propelled	A-1000983	SPS Belting - 20'	42 x 198	Rub-R-Cleat	69061
400 self propelled, < 1975	A-1000983	SPS Belting - 20' Dbl Swath	42 x 198	Rub-R-Cleat	69061
400 self propelled, 1976 >	A-1000982	SPS Belting - 20' Dbl Swath	42" x 186"	Rub-R-Cleat	0000-41705
M1950 self propelled, header for model 256 tractor	A-1001416	SPS Belting - 19.5' R.H.	42" x 118"	Rub-R-Cleat	0000-75676
M1950 self propelled, header for model 256 tractor	A-1000986	SPS Belting - 19.5' L.H.	42" x 225"	Rub-R-Cleat	0000-54134
M 2400 self propelled, header for model 150 & 256 tractor	A-1000979	SPS Belting - 24' R.H.	20' Ctr. Del. LH	Rub-R-Cleat	67790
M 2400 self propelled, header for model 150 & 256 tractor	A-1001330	SPS Belting - 24' L.H.	42" x 298"	Rub-R-Cleat	000-29035
M2800 self propelled, header for model 150, 256, & 276 tractor	A-1001334	SPS Belting - 28' L.H.	42" x 322"	Rub-R-Cleat	000-47077
M2800 self propelled, header for model 150, 256, & 276 tractor	A-1001321	SPS Belting - 28' R.H.	42" x 222"	Rub-R-Cleat	000-47078
4400 self propelled	A-1000973	SPS Belting - 12'	42" x 102"	Rub-R-Cleat	0000-1385
4400 self propelled	A-1000978	SPS Belting - 15'	42" x 138"	Rub-R-Cleat	0000-1386
4400 self propelled	A-1000981	SPS Belting - 18'	42" x 174"	Rub-R-Cleat	0000-1387
4400 self propelled	A-1000983	SPS Belting - 20'	42 x 198	Rub-R-Cleat	69061
4400 self propelled	A-1000982	SPS Belting - 20' Dbl Swath	42" x 186"	Rub-R-Cleat	0000-41705
4400 self propelled	A-1000986	SPS Belting - 22'	42" x 225"	Rub-R-Cleat	0000-54134
4400 self propelled	A-1000984	SPS Belting - 22' Dbl Swath	42" x 210"	Rub-R-Cleat	000-52911
4400 self propelled	A-1001324	SPS Belting - 24'	42" x 242"	Rub-R-Cleat	000-63536
4700 self propelled, w/ 4000 series table	A-1001357	SPS Belting - 12' - 30'	Endless Belt	Rub-R-Cleat	93301
4700 self propelled, w/ 4000 series table	A-1000401	SPS Belting -	Endless Belt	Rub-R-Cleat	93292
4700 self propelled, w/ 4000 series table	A-1000402	SPS Belting -	Endless Belt	Rub-R-Cleat	93298
4700 self propelled, w/ 4000 series table	A-1000403	SPS Belting -	Endless Belt	Rub-R-Cleat	93300
4700 self propelled, w/ 4000 series table	A-1000404	SPS Belting -	Endless Belt	Rub-R-Cleat	93297
4700 self propelled, w/ 4000 series table	A-1000405	SPS Belting -	Endless Belt	Rub-R-Cleat	93294
4700 self propelled, w/ 4000 series table	A-1000875	SPS Belting -		Rub-R-Cleat	93293
4700 self propelled, w/ 4000 series table	A-1001251	SPS Belting -		Rub-R-Cleat	93299
4700 self propelled, w/ 4000 series table	A-1001294	SPS Belting -	Endless Belt	Rub-R-Cleat	93302
4700 self propelled, w/ 4000 series table	A-1001847	SPS Belting -	Endless Belt	Rub-R-Cleat	93295
4700 self propelled, w/ 4000 series table	A-1001868	SPS Belting -	Endless Belt	Rub-R-Cleat	93296
White/ Oliver/ Mpl Moline					
MODELS	PART	CUT	SIZE	CLEAT TYPE	REPLACES
(85, 502 ALL self propelled)	A-1001352	SPS Belting - 10'	48" x 87"	Rub-R-Cleat	895322L
(503, 504 ALL self propelled)	A-1001353	SPS Belting - 12'	48" x 108"	Rub-R-Cleat	895323L
(503, 504 ALL self propelled)	A-1001354	SPS Belting - 14'	48" x 129"	Rub-R-Cleat	895324L

Self Propelled Swather Belting

White/ Oliver/ Mpl Moline

MODELS	PART	CUT	SIZE	CLEAT TYPE	REPLACES
(503, 504 ALL self propelled)	A-1000996	SPS Belting - 16'	48" x 150"	Rub-R-Cleat	895768L
(503, 504 ALL self propelled)	A-1001355	SPS Belting - 18'	48" x 174"	Rub-R-Cleat	895247L
(503, 504 ALL self propelled)	A-1001356	SPS Belting - 20'	48" x 198"	Rub-R-Cleat	895248L
6200 self propelled	A-1001263	SPS Belting - 12'	41.5" x 104"	Rub-R-Cleat	31-7970573, 31-7976543, 31-7976503
6200 self propelled	A-1000962	SPS Belting - 15'	41.5" x 140"	Rub-R-Cleat	31-7970583, 31-7976553, 31-7976513
6200 self propelled	A-1000965	SPS Belting - 18'	41.5" x 176"	Rub-R-Cleat	31-7976563, 31-7970593, 31-7976523
6200 self propelled	A-1001277	SPS Belting - 21'	41.5" x 212"	Rub-R-Cleat	31-7970603, 31-7976573, 31-7976533
6400 self propelled	A-1001260	SPS Belting - 25' Ext	41.5" x 51"	Rub-R-Cleat	
6400 self propelled	A-1001281	SPS Belting - 25' Platform	41.5" x 229"	Rub-R-Cleat	
100 self propelled	A-1001352	SPS Belting - 10'	48" x 87"	Rub-R-Cleat	895322L
100 self propelled	A-1001353	SPS Belting - 12'	48" x 108"	Rub-R-Cleat	895323L
100 self propelled	A-1001354	SPS Belting - 14'	48" x 129"	Rub-R-Cleat	895324L
100 self propelled	A-1000996	SPS Belting - 16'	48" x 150"	Rub-R-Cleat	895768L
100 self propelled	A-1001355	SPS Belting - 18'	48" x 174"	Rub-R-Cleat	895247L
100 self propelled	A-1001356	SPS Belting - 20'	48" x 198"	Rub-R-Cleat	895248L

Swather Canvas Bulk Belting



PART	DESCRIPTION	WIDTH	CLEAT TYPE
A-1002253150	Swather Canvas 150 ft. Bulk Roll	31.31"	Rub-R-Cleat
A-1002253300	Swather Canvas 300 ft. Bulk Roll	31.31"	Rub-R-Cleat
A-1002057150	Swather Canvas 150 ft. Bulk Roll	31.88"	Rub-R-Cleat
A-1002057300	Swather Canvas 300 ft. Bulk Roll	31.88"	Rub-R-Cleat
A-1000700150	Swather Canvas 150 ft. Bulk Roll	41"	Rub-R-Cleat
A-1000700300	Swather Canvas 300 ft. Bulk Roll	41"	Rub-R-Cleat
A-1001551150	Swather Canvas 150 ft. Bulk Roll	41.5"	Rub-R-Cleat
A-1001551300	Swather Canvas 300 ft. Bulk Roll	41.5"	Rub-R-Cleat
A-1003561150	Swather Canvas 150 ft. Bulk Roll	41.6"	Poly V guide
A-1003561300	Swather Canvas 300 ft. Bulk Roll	41.6"	Poly V guide
A-1001838300	Swather Canvas 300 ft. Bulk Roll	41.75"	Rub-R-Cleat
A-1001552150	Swather Canvas 150 ft. Bulk Roll	42"	Rub-R-Cleat
A-1001075150	Swather Canvas 150 ft. Bulk Roll	42"	Rub-R Recessed Cleat
A-1001075300	Swather Canvas 300 ft. Bulk Roll	42"	Rub-R Recessed Cleat

Parts are not original equipment parts and are not sponsored, affiliated, or otherwise connected with any major brand.

Swather Canvas Parts

Swather Canvas Parts

PART	DESCRIPTION	WIDTH (IN INCHES)	CLEAT TYPE	UNIT
A-1000100	Metal Connectors	31.31	7	set
A-1002254	Metal Connectors	31.75	7	set
A-1000116	Metal Connectors	37.50	8	set
A-1000115	Metal Connectors	39.00	10	set
A-1000104	Metal Connectors	39.75	9	set
A-1003808	Metal Connectors	39.80	11	set
A-1000102	Metal Connectors	40.50	8	set
A-1000108	Metal Connectors	41.50	9	set
A-1000103	Metal Connectors	41.75	8	set
A-1002190	Honey Bee Connector	41.75	9	set
A-1000111	Metal Connectors	42.00	9	set
A-1000113	Metal Connectors	43.50	10	set
A-1000114	Metal Connectors	47.75	10	set
A-1701014	Poly Cleat	41.50	6	each
A-1701016	Poly Cleat	42.00	6	each
A-1000137	Staples			1/2 lb
A-1002205	Poly Tacs, 1/4 lb bag			1/4 lb
A-1000136	Rivets, 1/2 lb bag			1/2 lb
A-1003530	50 Copper Rivets/washers			50 each
A-1000093	Draper hdwe: bolts, nuts, washers			10 each
A-1001970	Repair Kit: cement, thinner, fabric			1/2 pt, 1 pt
A-1700356	HH-66 Cement			1/2 pt
A-1700697	HH-66 Thinner			1 pt

Tub Grinder Belts

Bearcat					
MODELS	PART	DESCRIPTION	SIZE	PLY/TEXTURE	REPLACES
SEVERAL	A-1003352	Conveyer	24 X 535	2Ply .124" Thick w/ 9/16" Cleats	
SEVERAL	A-1003353	Conveyer	24 X 535	2Ply .166" Thick w/ 1-1/2" Cleats	
C.W.					
MODELS	PART	DESCRIPTION	SIZE	PLY/TEXTURE	REPLACES
P-1142	A-1003354	Top Conveyer	24 X 537	2Ply .124" Thick w/ 9/16" Cleats	
P-1142	A-1003355	Top Conveyer	24 X 537	2Ply .166" Thick w/ 1-1/2" Cleats	
P-1142	A-1003356	Bottom Conveyer	24 X 281	2Ply .237" Thick w/ 3/4" Cleats	
Case-IH					
MODELS	PART	DESCRIPTION	SIZE	PLY/TEXTURE	REPLACES
SEVERAL	A-1003360	Top Conveyer	24 x 97	2Ply .237" Thick w/ 3/4" Cleats	72572758C1
SEVERAL	A-1003361	Top Conveyer	18 x 399	2Ply .166" Thick w/ 1-1/2" Cleats	72572758C1
SEVERAL	A-1003357	Top Conveyer	18 x 522	2Ply .166" Thick w/ 1-1/2" Recessed Cleat	72564302C91
SEVERAL	A-1003358		18 x 540	2Ply .166" Thick w/ 1-1/2" Cleats	72564302C91

Parts are not original equipment parts and are not sponsored, affiliated, or otherwise connected with any major brand.

Tub Grinder Belts

Parts are not original equipment parts and are not sponsored, affiliated, or otherwise connected with any major brand.

E-Z					
MODELS	PART	DESCRIPTION	SIZE	PLY/TEXTURE	REPLACES
SEVERAL	A-1003357	Top Conveyor	18 x 522	2Ply .166" Thick w/ 1-1/2" Recessed Cleat	
SEVERAL	A-1003358		18 x 540	2Ply .166" Thick w/ 1-1/2" Cleats	
SEVERAL	A-1003359	Bottom Conveyor	18 X 120	2Ply .237" Thick w/ 3/4" Cleats	

Farmhand					
MODELS	PART	DESCRIPTION	SIZE	PLY/TEXTURE	REPLACES
F880A, F880B, F890B, XG-30	A-1003360	Top Conveyor	24 x 97	2Ply .237" Thick w/ 3/4" Cleats	72572758C1
F880A, F880B, F890B, XG-30	A-1003361	Top Conveyor	18 x 399	2Ply .166" Thick w/ 1-1/2" Cleats	72572758C1
F880A, F880B, F890B, XG-30	A-1003531	Top Conveyor	18 x 399	2Ply Diamond Top	1A88611
F891A, X6-40	A-1003362	Top Conveyor	18 x 495	2Ply .124" Thick w/ 9/16" Cleats	1A62063
F891A, X6-40	A-1003363	Top Conveyor	18 x 495	2Ply .166" Thick w/ 1-1/2" Cleats	1A62063
F891A, X6-40	A-1003532	Top Conveyor	18 x 495	2Ply Diamond Top	1A62063
F900, F900A	A-1003357	Top Conveyor	18 x 522	2Ply .166" Thick w/ 1-1/2" Recessed Cleat	
F900, F900A	A-1003358		18 x 540	2Ply .166" Thick w/ 1-1/2" Cleats	
F900, F900A	A-1003533	Top Conveyor	24 x 535	2Ply .124" Thick w/ 9/16" Cleats	1A88021
F900B, XG-50	A-1003364	Top Conveyor	18 x 477	2Ply .166" Thick w/ 1-1/2" Cleats	1A88631
F900B, XG-50	A-1003365	Top Conveyor	16 x 522	2Ply .166" Thick w/ 1-1/2" Cleats	1A88631
F900B, XG-50	A-1003534	Top Conveyor	24 x 537	2Ply .166" Thick w/ 1-1/2" Cleats	1A88631
XG-50	A-1003366	Under Mill Belt	24 x 281	2Ply .237" Thick w/ 3/4" Cleats	1A61785
910, 1010	A-1003367	Top Conveyor	18 x 540	2Ply .124" Thick w/ 9/16" Cleats	1A12110
910, 1010	A-1003368	Top Conveyor	18 x 540	2Ply .166" Thick w/ 1-1/2" Cleats	1A12110
910, 1010	A-1003535	Top Conveyor	18 x 120	2Ply .237" Thick w/ 3/4" Cleats	1A12110
910	A-1003369	Under Mill Belt	18 x 399	2Ply .124" Thick w/ 9/16" Cleats	
1010	A-1003370	Under Mill Belt	26 x 134	2Ply .237" Thick w/ 3/4" Cleats	
6650, F892A	A-1003371	Top Conveyor	22 X 540	2Ply .124" Thick w/ 9/16" Cleats	1A62789
6650, F892A	A-1003372	Tub Grinder Belt, Top	22 X 540	2Ply .166" Thick w/ 1 1/2" Cleats	1A62789
6650, F892A	A-1003536	Top Conveyor	22 X 540	2Ply Diamond Top .166" Thick w/ 1-1/2" Cleats	1A62789
6650, F892A	A-1003373	Under Mill	18 x 495	2Ply Diamond Top .237" Thick w/ 3/4" Cleats	
HG4050	A-1005837	Top Conveyor	22 x 534	2Ply .124" Thick w/ 9/16" Cleats	
HG4050	A-1005391	Top Conveyor	22 x 534	2Ply .166" Thick w/ 1 1/2" Cleats	
HG4050	A-1005836	Top Conveyor	22 x 534	2Ply Diamond Top	
HG4050	A-1005835	Under Mill Belt	29.5 x 229	2Ply .237" Thick w/ 3/4" Cleats	

Ford / New Holland					
MODELS	PART	DESCRIPTION	SIZE	PLY/TEXTURE	REPLACES
390, 391, 393	A-1003360	Top Conveyor	24 x 97	2Ply .237" Thick w/ 3/4" Cleats	72572758C1
390, 391, 393	A-1003361	Top Conveyor	18 x 399	2Ply .166" Thick w/ 1-1/2" Cleats	72572758C1
395	A-1003357	Top Conveyor	18 x 522	2Ply .166" Thick w/ 1-1/2" Recessed Cleat	
395	A-1003358		18" x 540"	2Ply .166" Thick w/ 1-1/2" Cleats	
396	A-1003364	Top Conveyor	18 x 477	2Ply .166" Thick w/ 1-1/2" Cleats	1A88631
396	A-1003365	Top Conveyor	16 x 522	2Ply .166" Thick w/ 1-1/2" Cleats	1A88631

Tub Grinder Belts

Hay Buster					
MODELS	PART	DESCRIPTION	SIZE	PLY/TEXTURE	REPLACES
H-900, H-1000, C-9, C-10	A-1003374	Top Conveyor	16 X 472	2Ply .166" Thick w/ 1-1/2" Cleats	1700001
(H-900, H-1000, C-9, C-10 ALL early models)	A-1003375	Top Conveyor	16 X 472	2Ply .166" Thick w/ 1-1/2" Recessed Cleats	1700033
H-1000 model change over	A-1003325	Top Conveyor	18 X 472	2Ply .166" Thick w/ 1-1/2" Recessed Cleats	1700003
H-1000 late models	A-1003376	Top Conveyor	18 X 477	2Ply .166" Thick w/ 1-1/2" Cleats	1700017
(C-11-C, H-1100 ALL first models)	A-1003377	Top Conveyor	16 X 522	2Ply .166" Thick w/ 1-1/2" Cleats	
(C-11-C, H-1100 ALL model change over)	A-1003378	Top Conveyor	18 X 522	2Ply .166" Thick w/ 1-1/2" Recessed Cleats	1700010
(C-11-C, H-1100 ALL late models), H1100 TILT SERIES II, H1100E SERIES II	A-1003379	Tub Grinder Belt, Top Conveyor	18 X 528	2Ply .166" Thick w/ 1-1/2" Cleats	1700006
(C-11-C, H-1100 ALL early models)	A-1003380	Belly Apron	24 x 216	2Ply .237" Thick w/ 3/4" Cleats	1700008
(C-11-C, H-1100 ALL late models)	A-1003381	Belly Apron	30 X 216	2Ply .237" Thick w/ 3/4" Cleats	1700031
1150 COMMERCIAL, 1150 GRAPPLE LEADER, 1155 COMMERCIAL	A-1700187	Tub Grinder Belt, Belly Apron	30 X 148.5	2Ply Endless .237" Thick w/ 3/4" Cleats	
1150 COMMERCIAL, 1150 GRAPPLE LEADER, 1155 COMMERCIAL	A-1700178	Tub Grinder Belt, Top Conveyor	24 X 645	2Ply .166 Thick w/ 1-1/2" Cleats	
Jones					
MODELS	PART	DESCRIPTION	SIZE	PLY/TEXTURE	REPLACES
MIGHTY GIANT	A-1003382	Top Conveyor	22 x 540	2Ply .166" Thick w/ 1-1/2" Cleats	
MIGHTY GIANT	A-1003383	Top Conveyor	22 x 540	2 Ply Diamond Top	
Miscellaneous					
MODELS	PART	DESCRIPTION	SIZE	PLY/TEXTURE	REPLACES
(TUB GRINDER: SEVERAL)	A-1002610		18", 12" On Center	2Ply w/ 1-1/2" Cleats	
(TUB GRINDER: SEVERAL)	A-1003850		18", 12" On Center	2Ply w/ 9/16" Cleats	
(TUB GRINDER: SEVERAL)	A-1005184		22", 12" On Center	2Ply w/ 1.5" Cleats	
(TUB GRINDER: SEVERAL)	A-1003723		22" Wide, 12" On Center	2Ply w/ 9/16" Cleats	
(TUB GRINDER: SEVERAL)	A-1005183		24" Wide, 12" On Center	2Ply w/ 9/16" Cleats	
(TUB GRINDER: SEVERAL)	A-1002601		30" Wide, 12" On Center	2Ply, w/ 3/4 Cleats	
Oswalt					
MODELS	PART	DESCRIPTION	SIZE	PLY/TEXTURE	REPLACES
SEVERAL	A-1003357	Top Conveyor	18 x 522	2Ply .166" Thick w/ 1-1/2" Recessed Cleat	
SEVERAL	A-1003358		18 x 540	2Ply .166" Thick w/ 1-1/2" Cleats	
SEVERAL	A-1003384	Top Conveyor	24 x 216	2Ply .237" Thick w/ 3/4" Cleats	
SEVERAL	A-1003385	Top Conveyor	18 x 120	2Ply .166" Thick w/ 1-1/2" Cleats	
Tubmaster					
MODELS	PART	DESCRIPTION	SIZE	PLY/TEXTURE	REPLACES
SEVERAL	A-1003386	Top Conveyor	21 x 535	2Ply .124" Thick w/ 9/16" Cleats	
SEVERAL	A-1003387	Top Conveyor	21 x 535	2Ply .166" Thick w/ 1-1/2" Cleats	

Parts are not original equipment parts and are not sponsored, affiliated, or otherwise connected with any major brand.

Tub Grinder Belts

Tub Grinder Belts

W.H.O.						
MODELS	PART	DESCRIPTION	SIZE	PLY/TEXTURE	REPLACES	
SEVERAL	A-1003388	Top Conveyor	20 x 634	2Ply .124" Thick w/ 9/16" Cleats		
SEVERAL	A-1003389	Top Conveyor	20 x 634	2Ply .166" Thick w/ 1-1/2" Cleats		
SEVERAL	A-1003390	Bottom Apron	24 x 262	2Ply .237" Thick w/ 3/4" Cleats		
PP 56	A-1003391	Top Conveyor	20 x 626	2Ply .124" Thick w/ 9/16" Cleats		
PP 56	A-1003392	Top Conveyor	20 x 626	2Ply .166" Thick w/ 1-1/2" Cleats		

Windrower Inverter Belting



Ford / New Holland						
MODELS	PART	SIZE	CLEAT TYPE	DRAPER TYPE	REPLACES	
(WINDROWER INVERTER: (144, 166 ALL Center V-Guide))	A-1003330	35" x 177"	RUB-R-CLEAT	Draper/Laced	850690, 86635705	
(WINDROWER INVERTER: (144, 166 ALL Slide V-Guide))	A-1005182	35" x 177"	RUB-R-CLEAT	Draper/Laced	86623245	
(WINDROWER INVERTER: 166 W/ Center V Guide)	A-1003331	35" x 125"	RUB-R-CLEAT	Draper Extension Laced		
(WINDROWER INVERTER: 166 W/ Side V Guide)	A-1005181	35" x 125"	RUB-R-CLEAT	Draper Extension Laced	86623246	
Gehl						
MODELS	PART	SIZE	CLEAT TYPE	DRAPER TYPE	REPLACES	
1160	A-1003333	30" x 241.5"	RUB-R-CLEAT	Draper/Laced		
2109	A-1005829	36" X 297.8"				

Parts are not original equipment parts and are not sponsored, affiliated, or otherwise connected with any major brand.