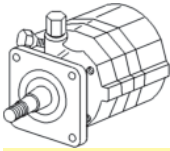


Pumps: Hydraulic & Steering

A-70240066 Pump, Power Steering 7.80 Lbs.
This Is A Belt Driven Pump



For Models: D19, D17 ALL SERIES 4, D17 DIESEL SN 38964 >, D17 GAS SN 42001 >

A-1751651M1 Seal, Power Steering Pump Driveshaft 0.03 Lbs.



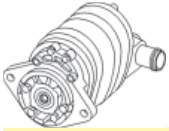
For Models: D10, D12, D14, D15, D17 < IV Series, WD, WD45

A-72074076 Pump, Hydraulic (Single) 6.98 Lbs.



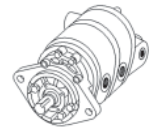
For Models: 160

A-70249828 Pump, Hydraulic 20.50 Lbs.



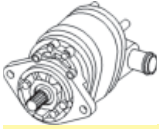
For Models: 175 SN<2035, 170 SN<7500

A-70256067 Pump, Hydraulic 21.24 Lbs.



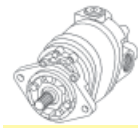
For Models: 175 SN2035>, 170 SN7500>

A-70249437 Pump, Hydraulic (Triple) 20.16 Lbs.



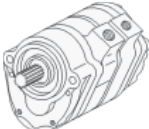
For Models: 180, 185

A-70257213 Pump, Hydraulic (Single) 16.38 Lbs.
Replaces: 70255101



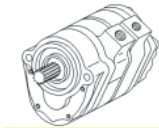
For Models: 190, 190XT, 190XTIII, 200

A-70248735 Pump, Hydraulic (Triple) 21.48 Lbs.



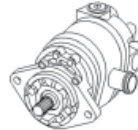
For Models: 190XT DIESEL SN<26612, 190 GAS SN<26855, DIESEL SN<26857

A-70248736 Pump, Hydraulic (Dual) 19.00 Lbs.



For Models: 190XT DIESEL SN<26612, 190 GAS SN<26855, DIESEL SN<26857

A-70257005 Pump, Hydraulic (Dual) 22.50 Lbs.



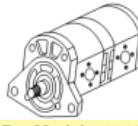
For Models: 200, 210, 220, (190XT, 190XTIII ALL DIESEL SN26612>), 190 GAS SN26855>, DIESEL SN26857>

A-70249469 Pump, Hydraulic (Dual) 16.80 Lbs.



For Models: 180, 185

A-72074620 Pump, Hydraulic 11.00 Lbs.



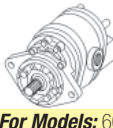
For Models: 6040

A-70263552 Pump, Hydraulic 20.38 Lbs.



For Models: 6060 SN<4383, 6080 SN<5284

A-70270905 Pump, Hydraulic 11.17 Lbs.



For Models: 6070, 6060 SN4383>, 6080 SN5284>

A-70269937 Pump, Hydraulic (Single) 15.00 Lbs.



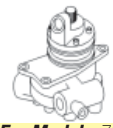
For Models: 7000

A-79016058 Pump, Hydraulic (Dual) 22.50 Lbs.
Replaces: 70269936



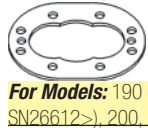
For Models: 7000

A-70271875 Pump, Hydraulic (Dual) 22.70 Lbs.



For Models: 7010, 7020, 7030, 7040, 7045, 7050, 7060, 7080, (8010, 8030, 8050, 8070 ALL 2WD MODEL ONLY)

A-70250351 Gear Plate, Hydraulic Pump 0.59 Lbs.
Used To Repair 70257005 Dual Hydraulic Pump



For Models: 190 GAS SN26855>, DIESEL SN26857>, (190XT, 190XTIII ALL DIESEL SN26612>), 200, 210, 220

AGCO
ALLIS
CHALMERS

DEUTZ
MASSEY
FERGUSON
WHITE/
OLIVER

CNH

CASE-IH

FORD / NEW
HOLLAND
FIAT

BELARUS

BOBCAT

JCB

JOHN
DEERE

KUBOTA

LANDINI

LEYLAND

LONG

McCORMICK

OTHER

RENAULT

SAME

VALTRA

VERSATILE

YANMAR

ZETOR

SCHWARTZ
SPEECO

*** Truck icon indicates the item is shipped via truck freight. ***

Pumps: Hydraulic & Steering

A-70250352 Gear, Internal Spline Hydraulic Pump 0.09 Lbs.
Used To Repair 70257005 Dual Hydraulic Pump



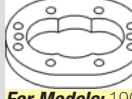
For Models: 190 GAS SN<26855>, DIESEL SN<26857>, (190XT, 190XTIII ALL DIESEL SN<26612>), 200, 210, 220

A-70250353 Slip Gear, Hydraulic Pump 0.09 Lbs.
Used To Repair 70257005 Dual Hydraulic Pump



For Models: 190 GAS SN<26855>, DIESEL SN<26857>, (190XT, 190XTIII ALL DIESEL SN<26612>), 200, 210, 220

A-70254195 Gear Plate, Hydraulic Pump 3.50 Lbs.
Used To Repair 70257005 Dual Hydraulic Pump



For Models: 190 GAS SN<26855>, DIESEL SN<26857>, (190XT, 190XTIII ALL DIESEL SN<26612>), 200, 210, 220

A-70253833 Drive ID Shaft, Hydraulic Pump 1.30 Lbs.
Used To Repair 70257005 Dual Hydraulic Pump



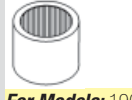
For Models: 190 GAS SN<26855>, DIESEL SN<26857>, (190XT, 190XTIII ALL DIESEL SN<26612>), 200, 210, 220

A-70244030 Drive ID Shaft, Hydraulic Pump 0.97 Lbs.
Used To Repair 70248735 Triple Hydraulic Pump



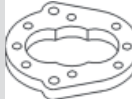
For Models: 190 GAS SN<26855>, DIESEL SN<26857>, 190XT DIESEL SN<26612

A-70234692 Bearing, Hydraulic Pump 0.09 Lbs.
Used To Repair 70248735 Triple Hydraulic Pump



For Models: 190 GAS SN<26855>, DIESEL SN<26857>, 190XT DIESEL SN<26612

A-70241114 Gear Plate, Hydraulic Pump 1.52 Lbs.
Used To Repair 70248735 Triple Hydraulic Pump



For Models: 190 GAS SN<26855>, DIESEL SN<26857>, 190XT DIESEL SN<26612

A-70244033 Drive ID Shaft, Hydraulic Pump 0.81 Lbs.
Used To Repair 70248735 Triple Hydraulic Pump



Dim/Info:
3.1795" Long
10 Teeth
0.8735" Dia.

For Models: 190 GAS SN<26855>, DIESEL SN<26857>, 190XT DIESEL SN<26612

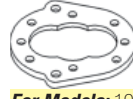
A-70241115 Drive Idler, Hydraulic Pump 0.54 Lbs.
Used To Repair 70248735 Triple Hydraulic Pump



Dim/Info:
3.258" Long
13 Spline
0.870" Dia.

For Models: 190 GAS SN<26855>, DIESEL SN<26857>, 190XT DIESEL SN<26612

A-70241112 Gear Plate, Hydraulic Pump 0.69 Lbs.
Used To Repair 70248735 Triple Hydraulic Pump



For Models: 190 GAS SN<26855>, DIESEL SN<26857>, 190XT DIESEL SN<26612

A-70241940 Gear, Internal Spline Idler Hydraulic Pump 0.12 Lbs.
Used To Repair 70248735 Triple Hydraulic Pump



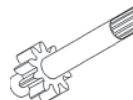
For Models: 190 GAS SN<26855>, DIESEL SN<26857>, 190XT DIESEL SN<26612

A-70241941 Slip Gear, Hydraulic Pump 0.12 Lbs.
Used To Repair 70248735 Triple Hydraulic Pump



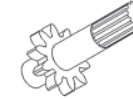
For Models: 190 GAS SN<26855>, DIESEL SN<26857>, 190XT DIESEL SN<26612

A-70253831 Drive Shaft, Hydraulic Pump 1.80 Lbs.
Used To Repair 70257005 Dual Hydraulic Pump



For Models: 190 GAS SN<26855>, DIESEL SN<26857>, (190XT, 190XTIII ALL DIESEL SN<26612>), 200, 210, 220

A-70244027 Drive Shaft, Hydraulic Pump 1.00 Lbs.
Used To Repair 70248735 Triple Hydraulic Pump



Dim/Info:
4.710" Long
13 Spline
0.870" Dia.

For Models: 190 GAS SN<26855>, DIESEL SN<26857>, 190XT DIESEL SN<26612

A-24D001 Repair Kit, Hydraulic Pump 0.68 Lbs.
Repairs Dual Pumps 70257005, 70260831 & 79016058



For Models: 200, 210, 220, 190 DIESEL SN 26857>, (190XT, 190XTIII ALL SN 26612>), 190 GAS SN 26855>

A-24B006 Repair Kit, Hydraulic Pump 1.02 Lbs.
Repairs Triple Pump 70248735



For Models: 190XT DIESEL SN <26612, 190 DIESEL SN <26857, 190 GAS SN <26855

A-24D002 Repair Kit, Hydraulic Pump 0.98 Lbs.
Repairs Triple Pumps 70249828, 70256067, 70249437

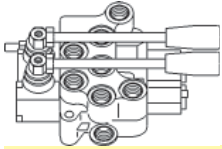


For Models: 170, 175, 180, 185

*** Truck icon indicates the item is shipped via truck freight. ***

Pumps: Hydraulic & Steering

A-VFG1009 Hydraulic Monoblock Spool Valve Sae w/Orb Fittings 9.44 Lbs.
Monoblock, double spool, double acting, 3/4" STD. ORB thread, 9 gal-
lon/minute cap., STD. Handles, open center, spring return, inlet relief valve,
modify to closed center w/ VFA4026 3/4" STD ORB plug, power beyond
from one of the tank ports



Dim/Info:
(2) Pressure Ports
(4) Service Ports
(2) Tank Ports
(1) Center Port

For Models: FITS SEVERAL MODELS

A-VFH1009 Joystick 1.66 Lbs.
For VFG1009 monoblock spool valve. 2 cables required.



For Models: FITS SEVERAL MODELS

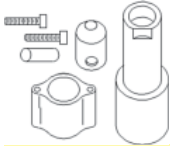
A-VFH1416 Cable, Remote Control 1.17 Lbs.
Used on the VFH1009 joystick only. Fits all spool valves w/ VFH1429 fitting
kit. Fits VFG1009 monoblock spool valve w/o kit, 2 req.



Dim/Info:
79.5"

For Models: FITS SEVERAL MODELS

A-VFH1429 Joystick, Cable Fitting Kit 0.57 Lbs.
Used on monoblock & bankable valves.



For Models: FITS SEVERAL MODELS

A-VLC2517 Switch, Push 0.02 Lbs.
Switch for VFH1009 lever.



For Models: FITS SEVERAL MODELS

- AGCO
- ALLIS CHALMERS
- DEUTZ
- MASSEY FERGUSON
- WHITE/ OLIVER
- CNH
- CASE-IH
- FORD / NEW HOLLAND
- FIAT
- BELARUS
- BOBCAT
- JCB
- JOHN DEERE
- KUBOTA
- LANDINI
- LEYLAND
- LONG
- McCORMICK
- OTHER
- RENAULT
- SAME
- VALTRA
- VERSATILE
- YANMAR
- ZETOR

SCHWARTZ
SPEECO

*** Truck icon indicates the item is shipped via truck freight. ***